



Toronto Metropolitan University Performance Indicators

March 2026

Table of Contents

Introduction	i
Table A: Toronto Metropolitan University Performance Indicators Classification	iii
1. Strategic Direction Indicators	
Figure 1.1: Satisfaction with Overall Quality of Education Received at Toronto Metropolitan University.....	1
Figure 1.2: National Survey of Student Engagement: Benchmark Summary Scores and Comparisons	1
Figure 1.3: Applications : Registrants Ratio.....	2
Figure 1.4: Mean Entering Average from Secondary School	2
Figure 1.5: Scholarships and Bursaries as Share of Total Operating Expenditures	3
Figure 1.6: % of Students Retained from Year I after 1, 2 and 3 Years of Study and MCURES Calculated Graduation Rate: % of Entering Students Who Graduated Within 7 Years	3
Figure 1.7: CSRDE 6-Year Graduation Rate and First-Year Retention Rate.....	4
Figure 1.8: MCURES Employment Rate: 6 Months after Graduation and 2 Years after Graduation	4
Figure 1.9: Percentage of Faculty with Doctoral Degrees	5
Figure 1.10: Value of Peer-Adjudicated Research Grants per Eligible Faculty Member and Number of Peer-Adjudicated Research Grants per Eligible Faculty Member.....	5
Figure 1.11: Total External Research Funding	6
Figure 1.12: Library Expenditures as Share of Total Operating Expenditures	6
Figure 1.13: Library Expenditures per FTE Student.....	7
Figure 1.14: Zone Learning Enrolment (Fall Headcount)	7
2. Financial Capacity Indicators	
Figure 2.1: Operating Deficit/Surplus as a Percentage of Operating Revenue.....	8
Figure 2.2: Total Liabilities as Share of Total Assets.....	8

Figure 2.3:	Long Term Debt per FFTE Student	9
Figure 2.4:	Endowment per FFTE Student	9
Figure 2.5:	Toronto Metropolitan University Endowment Fund	10
Figure 2.6:	Strategic Mandate Agreement SMA3 Metrics: <i>Graduate Earnings; Experiential Learning; Skills & Competencies; Graduate Employment Rate in Related Field; Institutional Strength/Focus; Graduation Rate; Research Funding & Capacity; Innovation (Private Sector Research Funding); Community/Local Impact; Economic Impact: Number of Start ups</i>	11
 3. Effective Management Indicators		
Figure 3.1:	Student : Faculty Ratio	12
Figure 3.2:	Faculty Turnover Rate and Staff Turnover Rate.....	12
Figure 3.3:	Staff : Faculty Ratio	13
Figure 3.4:	Student : Staff Ratio.....	13
Figure 3.5:	Actual Space Inventory versus Space Guidelines Calculated by Council of Ontario Universities	14
 4. University Profile Indicators		
Figure 4.1:	Annual Number of Donors	15
Figure 4.2:	Annual Level of Donation Commitments	15
Figure 4.3:	Annual Level of Donations Received	16
Figure 4.4:	Media References to Toronto Metropolitan University (Print and Online), Publication Impressions (Print) and Broadcast References.....	16

Introduction

Toronto Metropolitan University Performance Indicators ("Performance Indicators") have been developed to provide a set of annually updated measures of Toronto Metropolitan University's (the "University" or "TMU") performance over a wide range of issues of interest to the Board of Governors (the "Board"). They are presented in a graphical manner to facilitate interpretation and have been updated to incorporate 2024-25 full-year data.

The Performance Indicators allow the Board to track progress over time on issues central to the mission of the University. Where possible, the indicators provide comparisons against other universities. The Performance Indicators are tracked at the level of the University. The University tracks academic-related indicators at the Faculty, Program or School/Department level through Senate's Progress Indicators.

The Performance Indicators provide technically sound measures that were chosen for their relevance, the reliability of underlying data, the ongoing accessibility to underlying data, and the clarity of what is measured. Nevertheless, care should be taken in drawing conclusions from these indicators. Cautions include:

- the indicators measure only what is quantifiable and where data are available
- comparator information is based on standardized data and measures that reflect "average" universities
- comparators are not designed as benchmarks
- the University is unique when compared to the program mix, enrolment and budgets of other Canadian universities

There are 31 Performance Indicators that are classified into 4 primary categories that correspond to oversight of: Strategic Direction (15 indicators), Financial Capacity (6 indicators), Effective Management (6 indicators), and University Profile (4 indicators).

First incorporated into this document in March 2021, the Strategic Mandate Agreement indicators include ten metrics used by the Ministry of Colleges, Universities, Research Excellence and Security (MCURES) to assess institutional performance under the Strategic Mandate Agreement 2020-2025 (SMA3) and beginning next year will switch to the eight metrics to be used under the new Strategic Mandate Agreement 2025-2030 (SMA4). The ten SMA3 metrics are:

- **Graduate Earnings:** Median earnings of graduates after two years.
- **Experiential Learning:** Percentage of graduates from undergraduate programs who had one or more EL opportunities while at TMU.
- **Skills & Competencies:** A new institution-specific metric based on National Survey of Student Engagement (NSSE) Question #18.
- **Graduate Employment Rate in Related Field:** Among graduates employed full-time, the percentage employed in fields related to skills learned in their area of study at TMU.
- **Institutional Strength/Focus:** Enrolment in strength/focus areas as percentage of total enrolment.
- **Graduation Rate:** The graduation rate from undergraduate programs.
- **Research Funding & Capacity:** TMU's percentage share of the Ontario system.
- **Innovation (Private Sector Research Funding):** Dollar value of private sector research funding.
- **Community/Local Impact:** Total enrolment as a percentage of the population in Toronto.
- **Economic Impact: Number of Startups:** The number of startups in the Zone ecosystem.

Table A summarizes the indicators included in the report and the update schedule for each indicator.

Comparator Groups

In order to provide a context for the University's performance, the indicators have also been calculated where possible for groups of other universities. The comparator groups are not necessarily ideal comparators for the University because the mix of programs offered at other institutions differs from that at Toronto Metropolitan University and/or they differ in size.

Ontario Universities

This comparator group includes all reporting Ontario universities from among: Brock, Carleton, Guelph, Lakehead, Laurentian, McMaster, Nipissing, OCAD University (OCAD U), Ontario Tech, Ottawa, Queen's, Toronto Metropolitan University, Toronto, Trent, Waterloo, Western, Wilfrid Laurier, Windsor, and York.

Canadian University Survey Consortium Graduating Student Survey Canadian Universities

This comparator group is used only for the percentage of students satisfied or very satisfied with the overall quality of education indicator that is based on data from the Canadian Undergraduate Survey Consortium (CUSC) Survey of Graduating Students. Participating universities change from year to year and the 2024 participants were: Acadia University (Nova Scotia), Alberta University of the Arts (Alberta), Ambrose University (Alberta), Athabasca University (Alberta), Burman University (Alberta), Capilano University (British Columbia), Carleton University (Ontario), Concordia University (Quebec), Concordia University of Edmonton (Alberta), Lakehead University (Ontario), Laurentian University (Ontario), MacEwan University (Alberta), McMaster University (Ontario), Mount Royal University (Alberta), Mount Saint Vincent University (Nova Scotia), Nipissing University (Ontario), Redeemer University (Ontario), Saint Mary's University (Nova Scotia), Simon Fraser University (British Columbia), St. Francis Xavier University (Nova Scotia), St. Mary's University (Alberta), The King's University (Alberta), Thompson Rivers University (British Columbia), Toronto Metropolitan University (Ontario), Trent University (Ontario), Trinity Western University (British Columbia), Université de Moncton (New Brunswick), University of Calgary (Alberta), University of Lethbridge (Alberta), University of New Brunswick (New Brunswick), University of Northern British Columbia (British Columbia), University of Regina (Saskatchewan), University of the Fraser Valley (British Columbia), University of Victoria (British Columbia), University of Waterloo (Ontario), University of Winnipeg (Manitoba), Wilfrid Laurier University (Ontario), Yorkville University (Ontario).

U.S. Peers

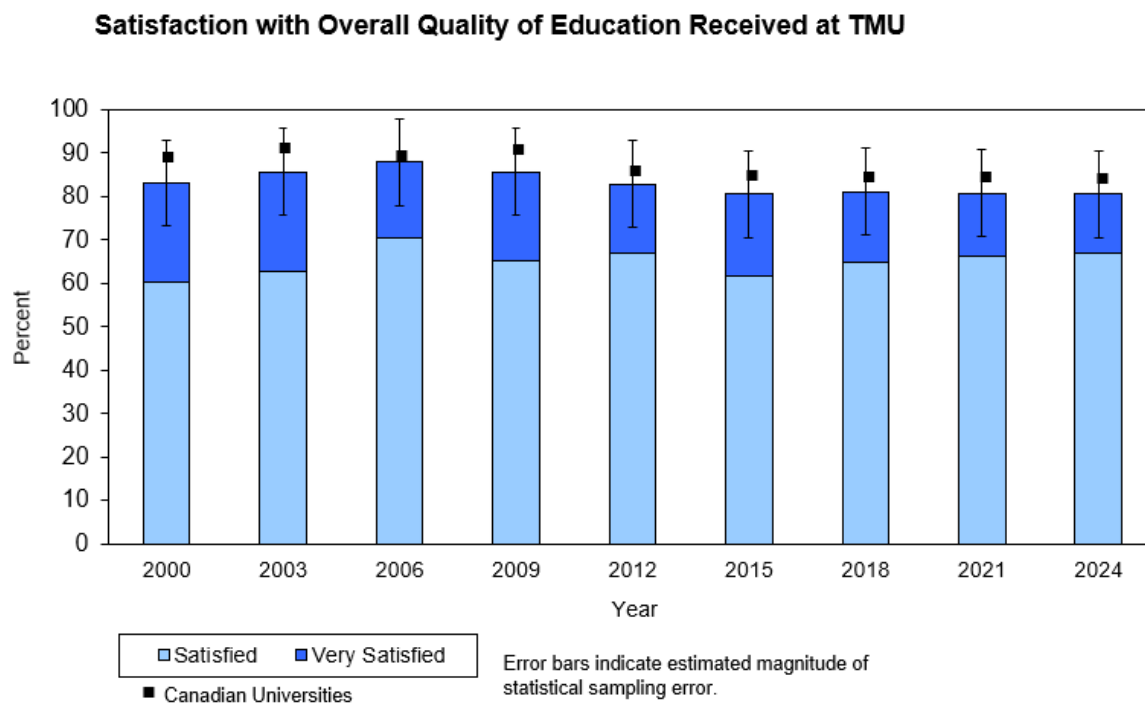
This comparator group is only used for the National Survey of Student Engagement (NSSE) benchmark summary scores and comparisons. For NSSE 2023, it includes participating public U.S. institutions that are urban, commuter universities with more than 20,000 students, and in either the *Doctoral Universities* or *Master's Colleges & Universities: Larger Universities* Carnegie categories: California State Polytechnic University-Pomona, California State University, Fullerton, California State University, Los Angeles, California State University, Sacramento, Florida International University (Miami, FL), San Francisco State University, San Jose State University, The University of Texas at Arlington, The University of Texas at San Antonio.

Table A: Toronto Metropolitan University Performance Indicators Classification

Performance Indicators by Primary Category	Figure Number	Update Schedule	Indicator May Provide Useful Information For Assessing:			
			Strategic Direction	Financial Capacity	Effective Management	University Profile
STRATEGIC DIRECTION						
Satisfaction with Overall Quality of Education Received at TMU	1.1	Triennial (Fall)	X		X	X
National Survey of Student Engagement: Benchmark Summary Scores and Comparisons	1.2	Biennial (Fall)	X		X	
Applications : Registrants Ratio	1.3	Annual (Fall)	X		X	
Mean Entering Average from Secondary School	1.4	Annual (Fall)	X			X
Scholarships and Bursaries as Share of Total Operating Expenditures	1.5	Annual (Summer)	X	X	X	
Percentage of Students Retained from Year 1 After 1, 2, and 3 Years of Study	1.6	Annual (Summer)	X		X	
MCURES Graduation Rate	1.6	Annual (Fall)	X		X	
CSRDE 6-Year Graduation Rate and First-Year Retention Rate	1.7	Annual (Summer)	X		X	
MCURES Employment Rate: 6 Months and 2 Years After Graduation	1.8	Annual (Fall)	X			X
Percentage of Faculty with Doctoral Degrees	1.9	Annual (Summer)	X		X	
Value and Number of Peer-Adjudicated Research Grants per Eligible Faculty Member	1.10	Annual (Summer)	X			
Total External Research Funding	1.11	Annual (Fall)	X			
Library Expenditures as Share of Total Operating Expenditures	1.12	Annual (Summer)	X	X	X	
Library Expenditures per FFTE Student	1.13	Annual (Summer)	X	X	X	
Zone Learning Enrolment (Fall Headcount)	1.14	Annual (Fall)	X			X
FINANCIAL CAPACITY						
Operating Deficit/Surplus as a Percentage of Operating Revenue	2.1	Annual (Summer)		X	X	
Total Liabilities as Share of Total Assets	2.2	Annual (Summer)		X	X	
Long Term Debt per FFTE Student	2.3	Annual (Summer)		X	X	
Endowment per FFTE Student	2.4	Annual (Summer)	X	X	X	X
Toronto Metropolitan University Endowment Fund	2.5	Annual (Summer)		X		X
Strategic Mandate Agreement SMA3 Metrics	2.6	Annual (Winter)	X	X	X	
EFFECTIVE MANAGEMENT						
Student : Faculty Ratio	3.1	Annual (Summer)	X	X	X	
Faculty Turnover Rate	3.2	Annual (Summer)			X	
Staff Turnover Rate	3.2	Annual (Summer)			X	
Staff : Faculty Ratio	3.3	Annual (Summer)			X	
Student : Staff Ratio	3.4	Annual (Summer)	X	X	X	
Actual Space Inventory versus Space Guidelines Calculated by Council of Ontario Universities	3.5	Triennial (Winter)		X	X	
UNIVERSITY PROFILE						
Annual Number of Donors	4.1	Annual (Summer)		X		X
Annual Level of Donation Commitments	4.2	Annual (Summer)		X		X
Annual Level of Donations Received	4.3	Annual (Summer)		X		X
Media References to TMU: Newspaper Clippings, Newspaper Impressions and Broadcast References	4.4	Annual (Summer)	X			X

Strategic Direction Indicators

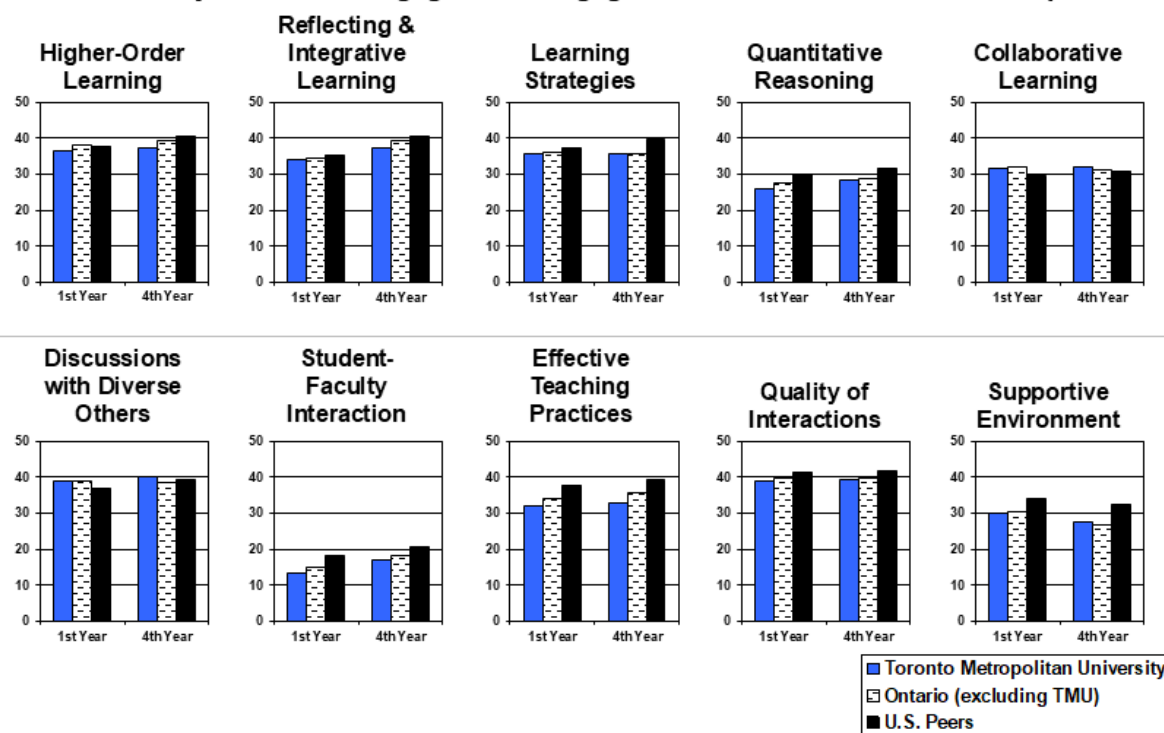
Figure 1.1



Source: Canadian University Survey Consortium (CUSC), Survey of Graduating Students (triennial)

Figure 1.2

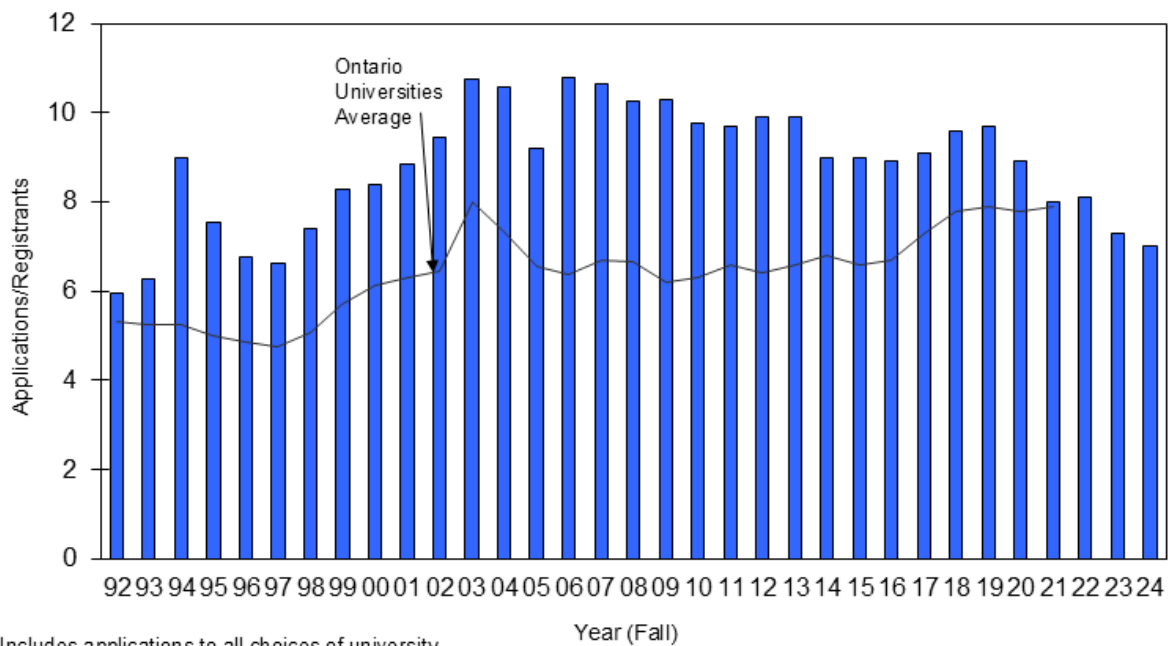
National Survey of Student Engagement: Engagement Indicator Scores and Comparisons



Source: National Survey of Student Engagement 2023 (triennial)

Figure 1.3

Applications : Registrants Ratio

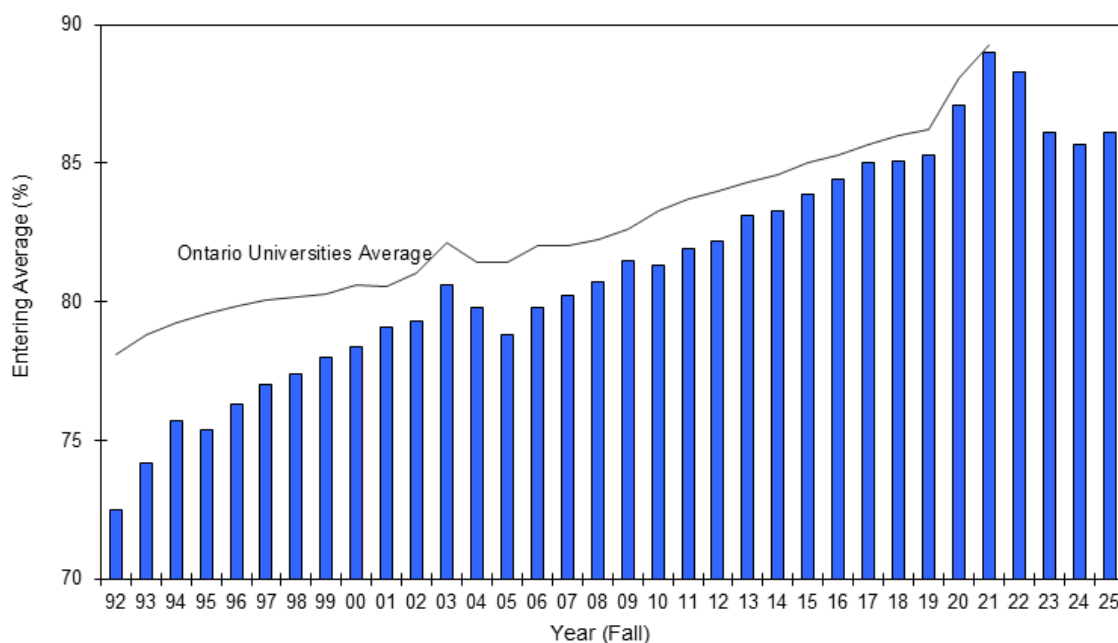


Note: Includes applications to all choices of university

Source: Ontario Universities' Application Centre

Figure 1.4

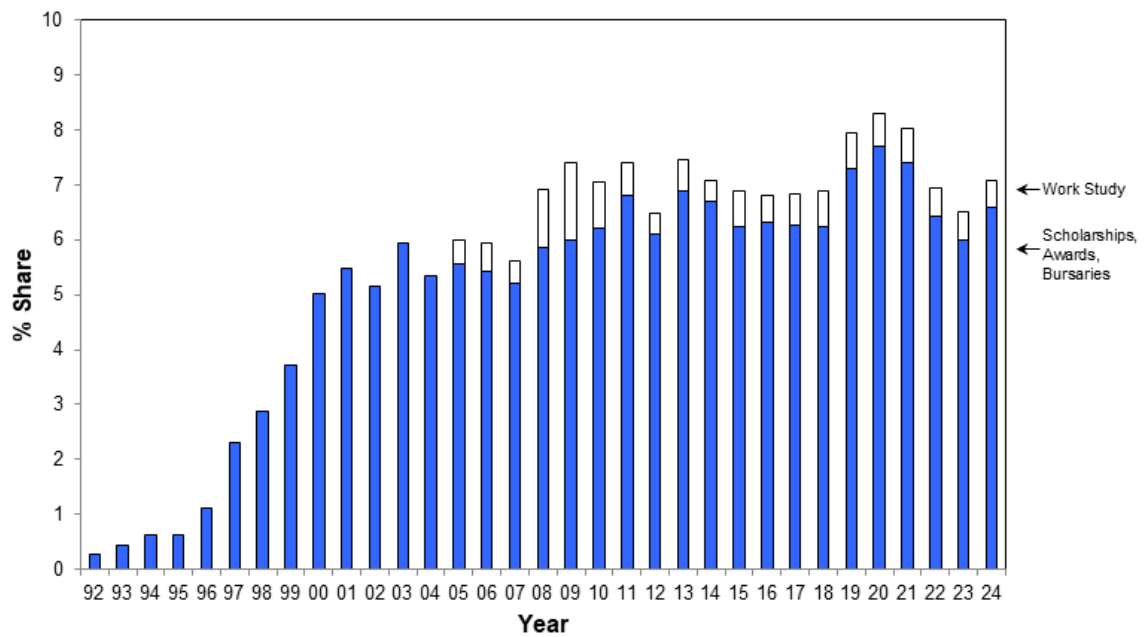
Mean Entering Average from Secondary School



Source: Ontario Universities' Application Centre; TMU Student Information System

Figure 1.5

Scholarships and Bursaries as Share of Total Operating Expenditures

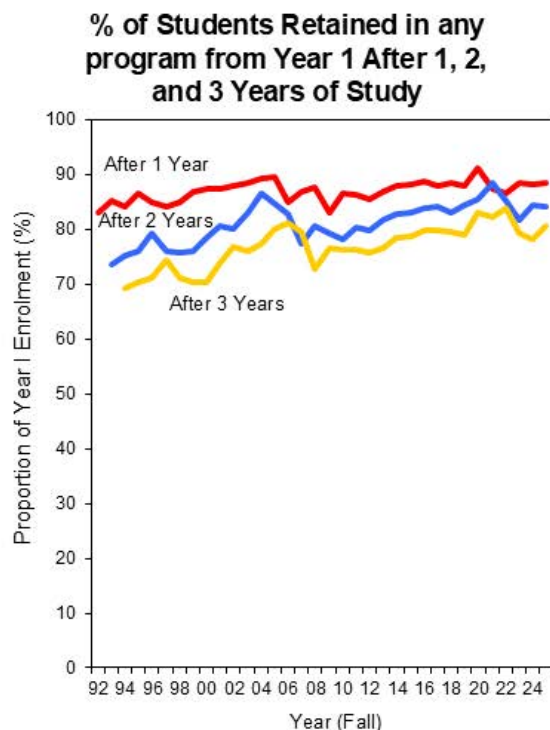


Work Study component shown as white bars beginning in 2005-06.

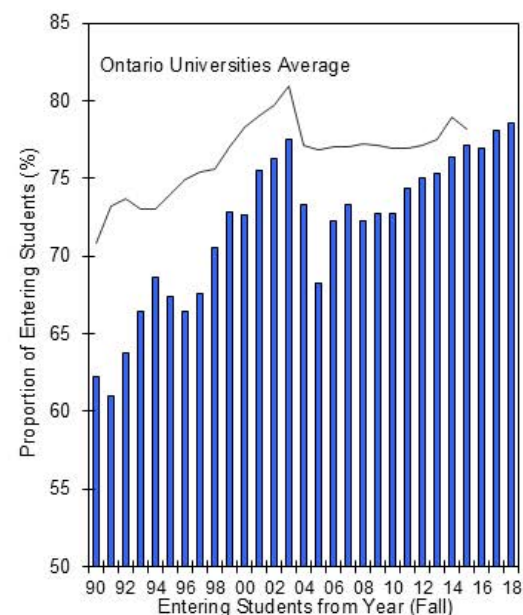
Note: Fiscal year beginning in year shown.

Sources: TMU Financial Services data

Figure 1.6



MCURES Calculated Graduation Rate: % of Entering Students Who Graduated Within 7 Years

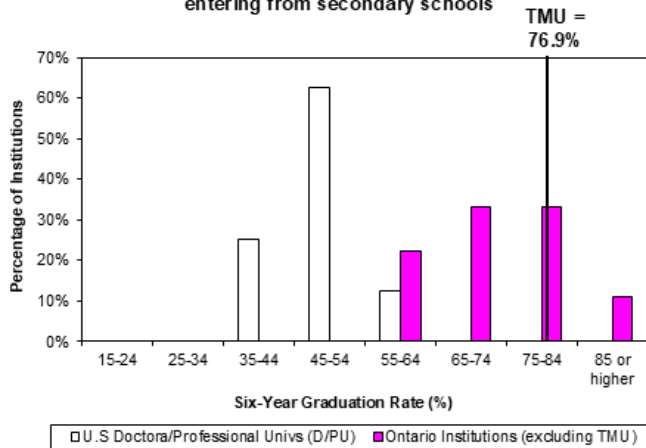


Sources: TMU Student Information System; Ministry of Colleges, Universities, Research Excellence and Security

Figure 1.7

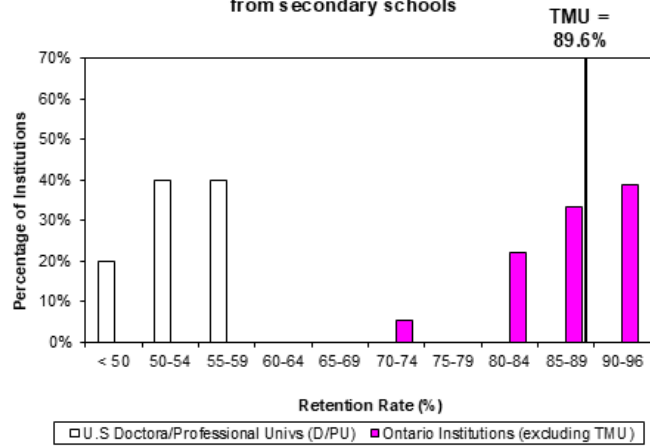
CSRDE 6-Year Graduation Rate

Distribution of institutions by six-year graduation rate, Fall 2018 cohort of first-year, first-time, full-time students entering from secondary schools



CSRDE First-Year Retention Rate

Distribution of Institutions by first-year retention rate, Fall 2023 cohort of first-time, full-time students entering from secondary schools

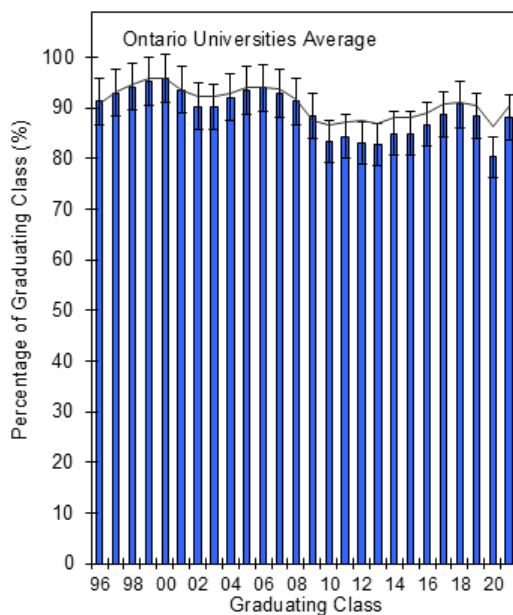


Note: Latest data released for comparator institutions are for three years prior to TMU data (i.e., Fall 2015 for CSRDE 6-Year Graduation Rate and Fall 2020 for CSRDE First-Year Retention Rate). TMU data are for Fall 2018 for CSRDE 6-Year Graduation Rate and Fall 2023 for CSRDE First-Year Graduation Rate.

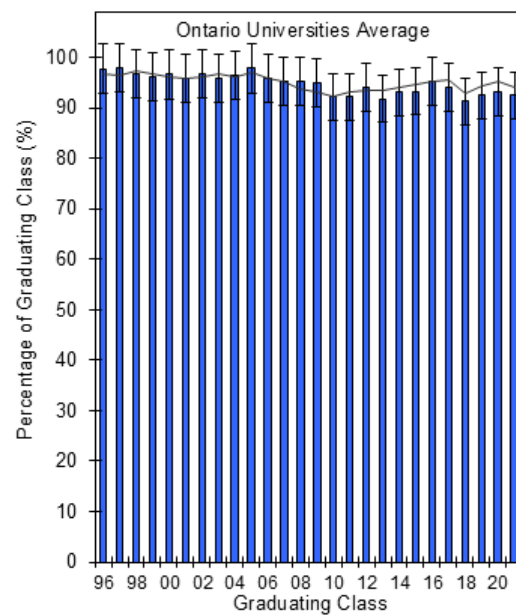
Source: Consortium for Student Retention Data Exchange (CSRDE)

Figure 1.8

MCURES Employment Rate: 6 Months After Graduation



MCURES Employment Rate: 2 Years After Graduation

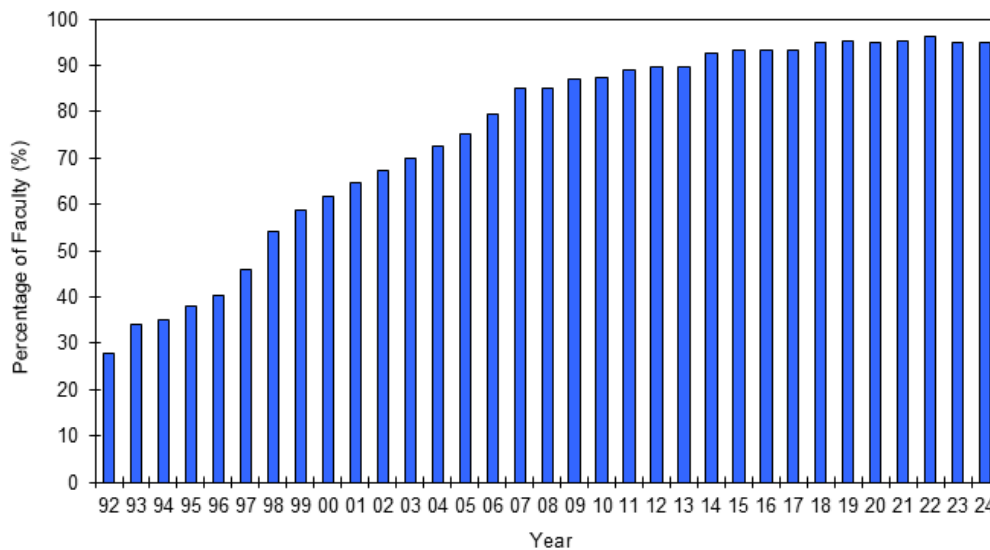


Source: Ministry of Colleges, Universities, Research Excellence and Security - Ontario University Graduate Survey (OUGS)

Error bars indicate estimated magnitude of statistical sampling error.

Figure 1.9

Percentage of Faculty with Doctoral Degrees

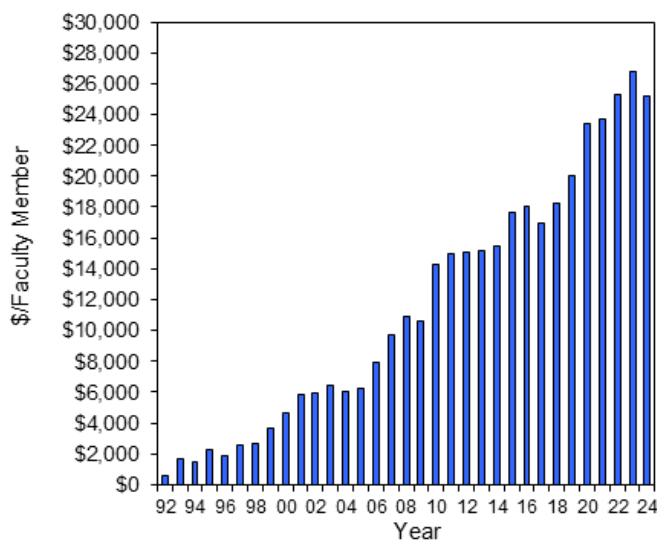


Note: To reflect traditional terminal degrees, beginning with 1994 excludes faculty teaching law in Business Management or Environmental Health; and also excludes faculty in the following disciplines: Communication and Design (except Professional Communication), Architectural Sciences, Landscape Architecture, and Nursing; Hospitality and Tourism Management excluded beginning with 1998

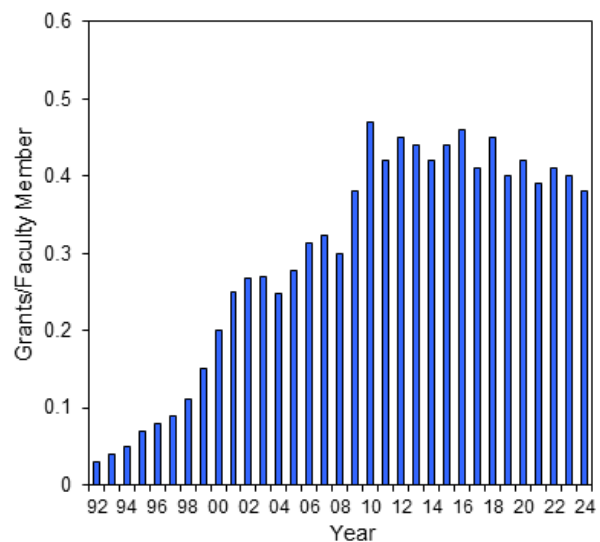
Source: Maclean’s Survey of Canadian Universities (prior to 2005-06), Common University Data Ontario, TMU Human Resources data

Figure 1.10

Value of Peer-Adjudicated Research Grants per Eligible Faculty Member



Number of Peer-Adjudicated Research Grants per Eligible Faculty Member

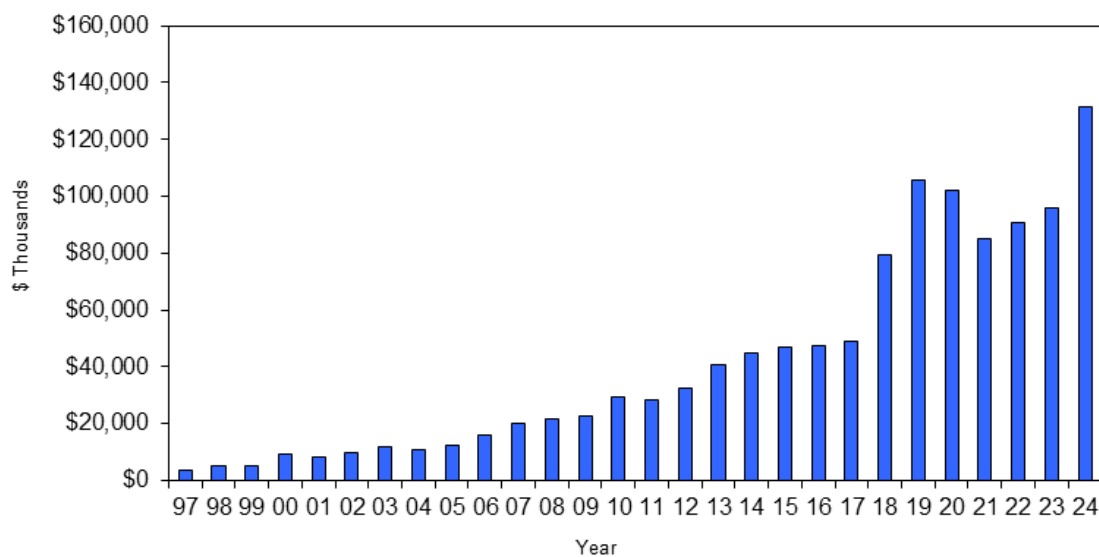


Note: Eligible faculty comprises TFA affiliated with teaching departments (excluding limited-term faculty and excluding CUPE); includes only peer-adjudicated funds dispersed by federal granting agencies and allocated for use within the university excluding general research grants; shows amounts awarded rather than expenditures; fiscal year beginning in year shown.

Source: TMU Office of the Vice-President Research and Innovation data

Figure 1.11

Total External Research Funding

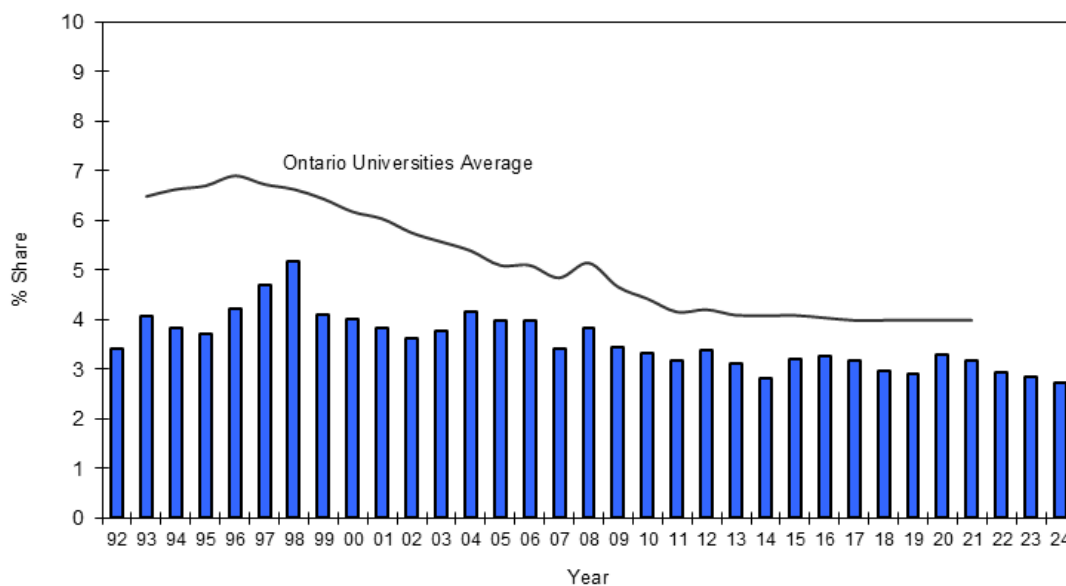


Note: Fiscal year beginning in year shown.

Source: TMU Office of the Vice-President Research and Innovation

Figure 1.12

Library Expenditures as Share of Total Operating Expenditures

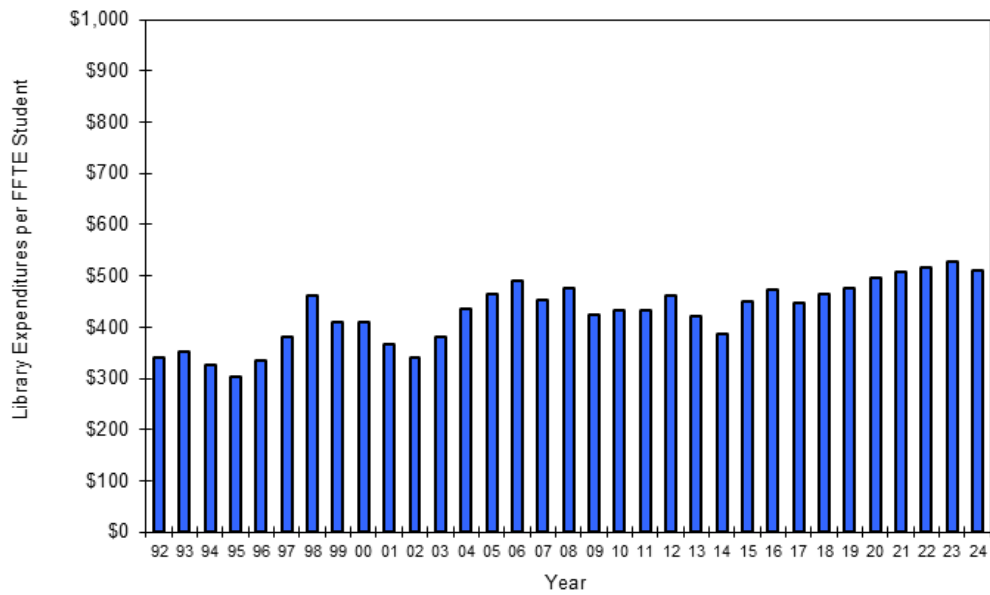


Note: Fiscal year beginning in year shown.

Sources: COFO-UO data, TMU Financial Services data

Figure 1.13

Library Expenditures per FTE Student

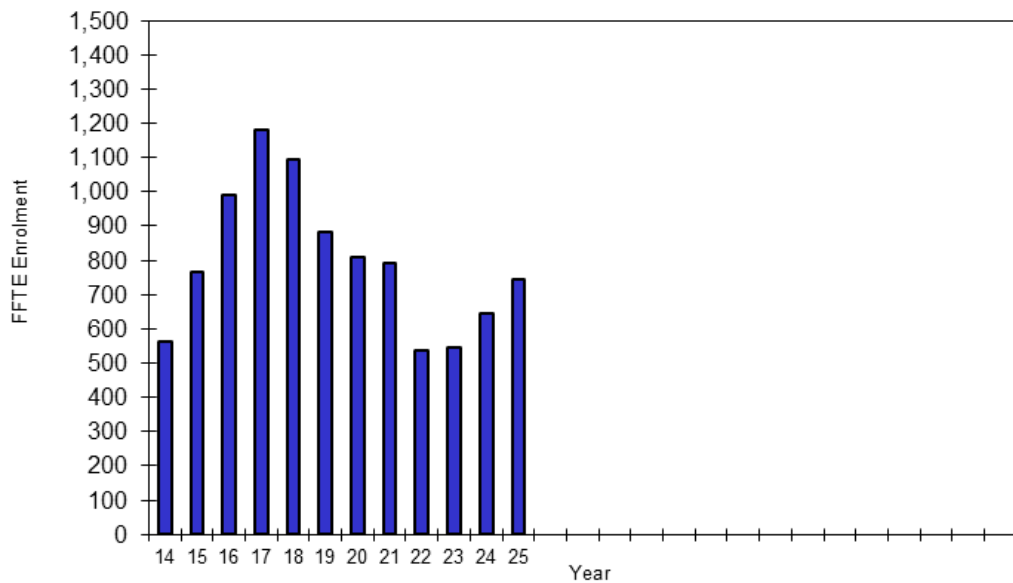


Note: Fiscal year beginning in year shown.

Sources: TMU Financial Services data; TMU Student Information System

Figure 1.14

Zone Learning Enrolment (FFTE)



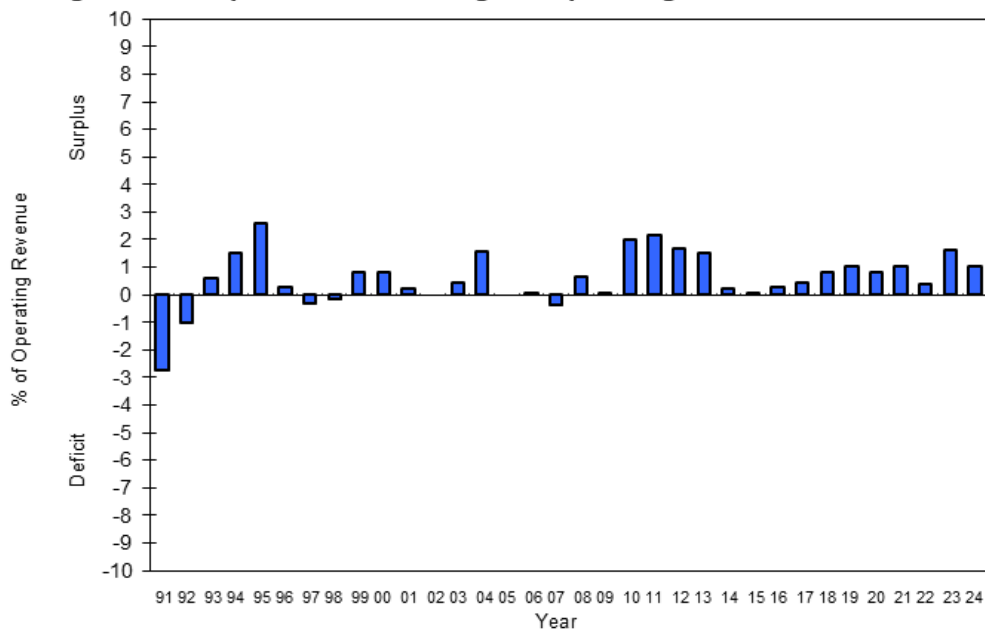
Note: Zone Learning registrant fiscal full-time equivalent enrolment (FFTE). Includes Zone registrants in Digital Media Zone (DMZ) and other Zones.

Source: TMU Student Information System

Financial Capacity Indicators

Figure 2.1

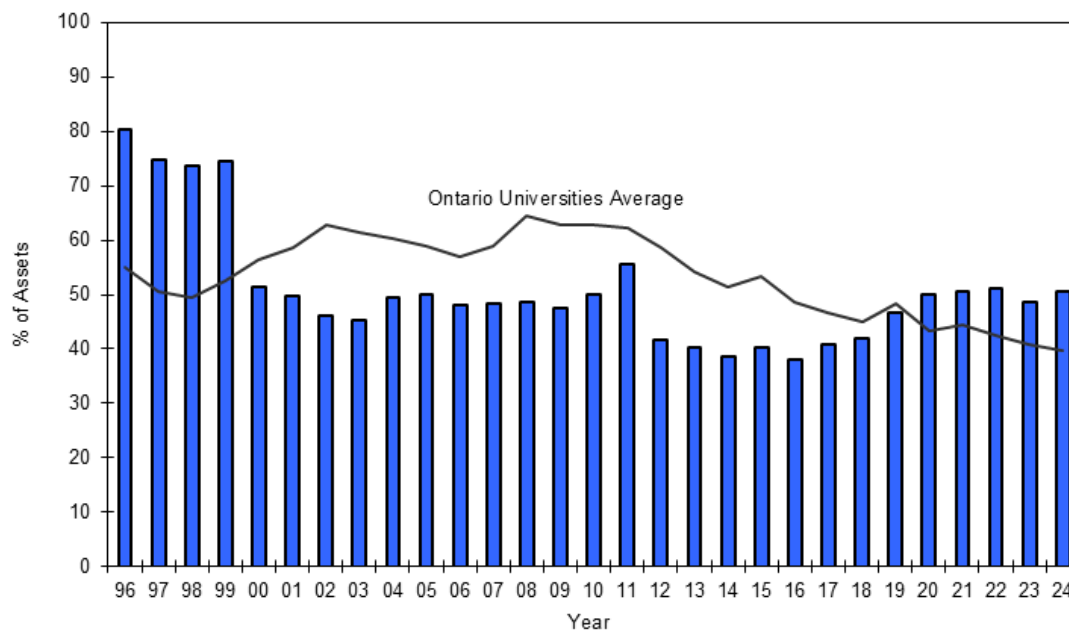
Operating Deficit/Surplus as a Percentage of Operating Revenue



Note: A balanced budget is shown by the absence of a bar on the zero line; fiscal year beginning in year shown. In 2007-08, the small operating deficit shown is caused by spending of carryforwards from prior years. Source: TMU Financial Services Report

Figure 2.2

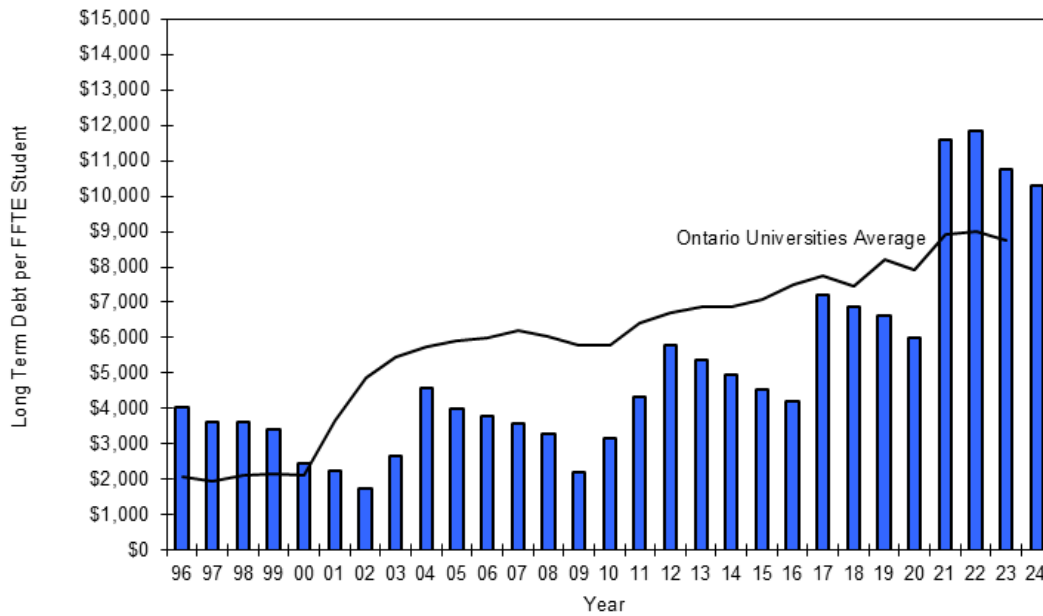
Total Liabilities as Share of Total Assets



Note: Comparators exclude data for Ontario Tech University. Fiscal year beginning in year shown. Source: TMU Financial Services Report

Figure 2.3

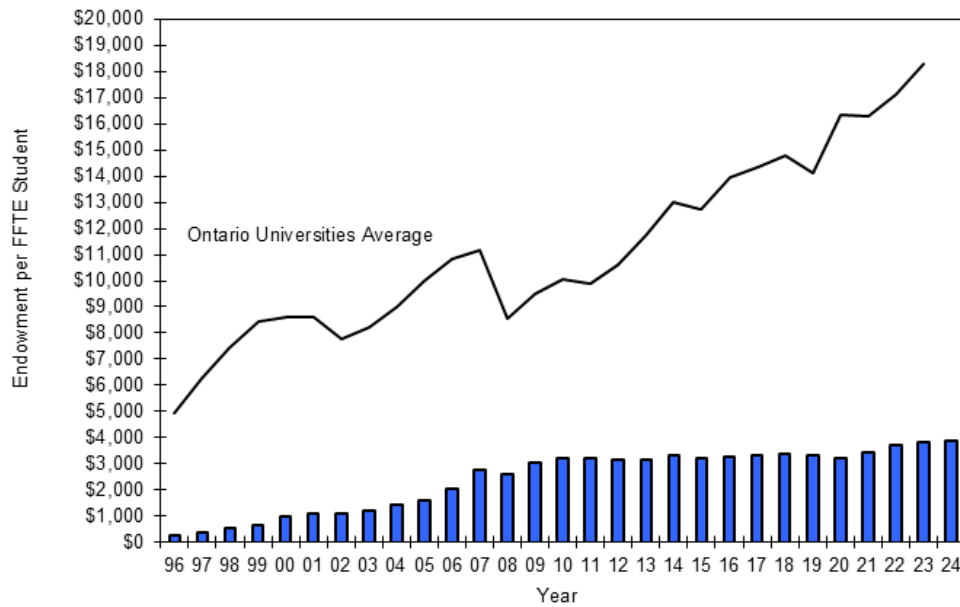
Long Term Debt per FTE Student



Note: Comparators exclude data for Ontario Tech University; FFTE includes students eligible and ineligible for funding; fiscal year beginning in year shown.
 Sources: TMU Financial Services Report Long Term Debt; Council of Ontario Universities Enrolment Data

Figure 2.4

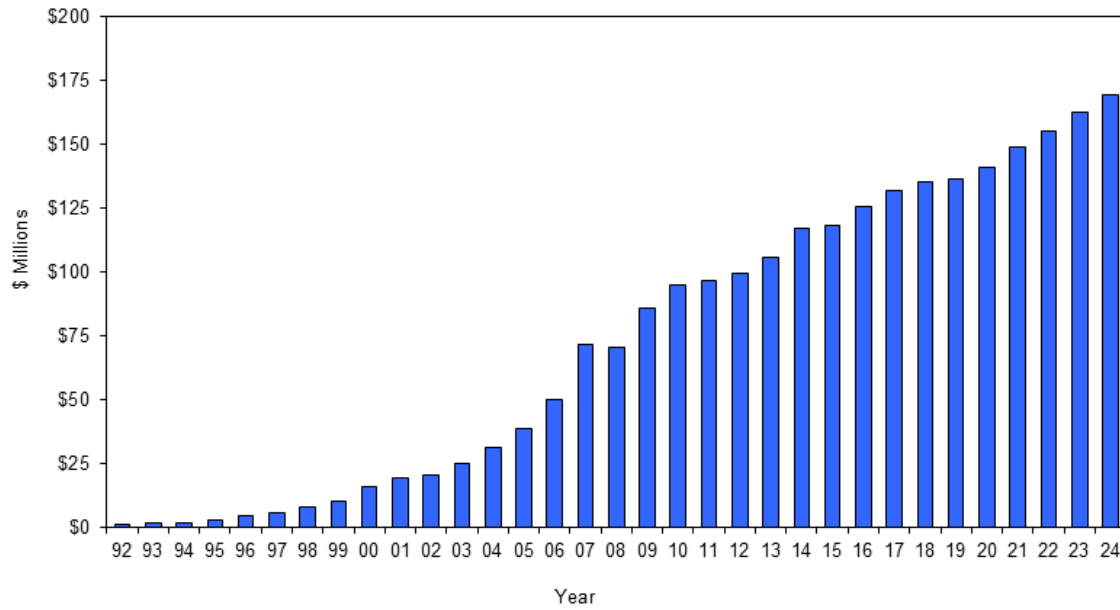
Endowment per FTE Student



Note: FFTE includes students eligible and ineligible for funding; fiscal year beginning in year shown.
 Sources: TMU Financial Services Report Endowment Data; Council of Ontario Universities Enrolment Data

Figure 2.5

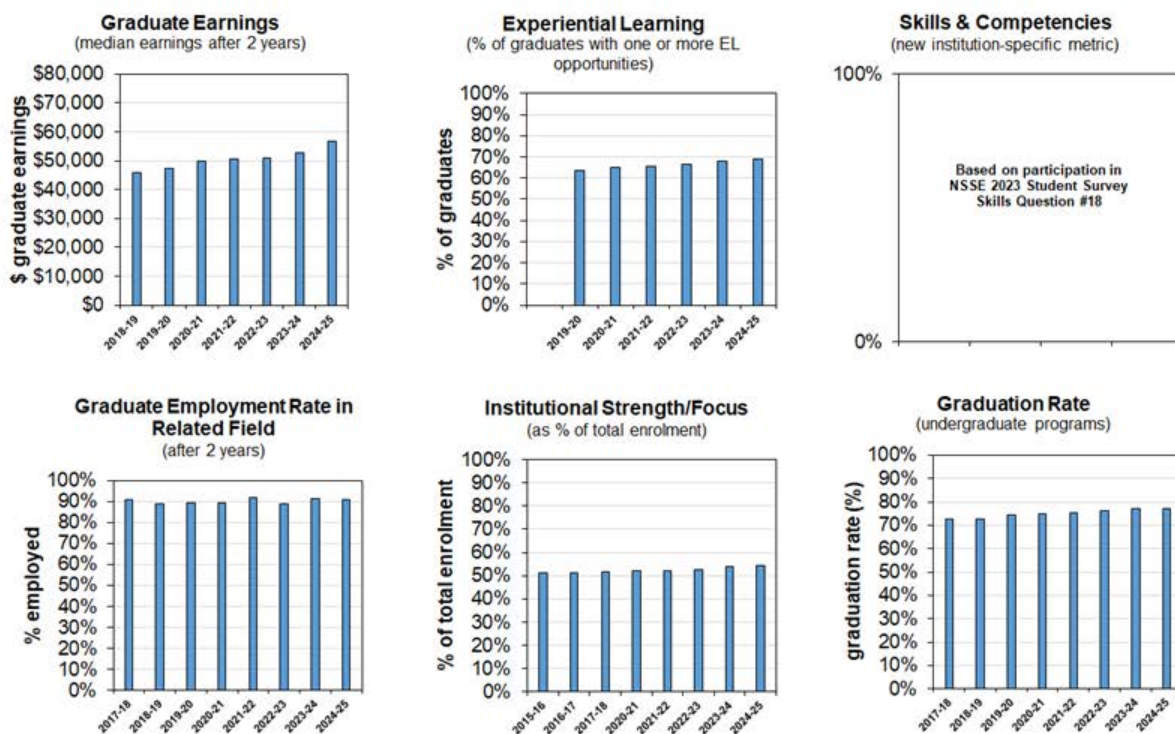
Toronto Metropolitan University Endowment Fund



Note: Fiscal year beginning in year shown.

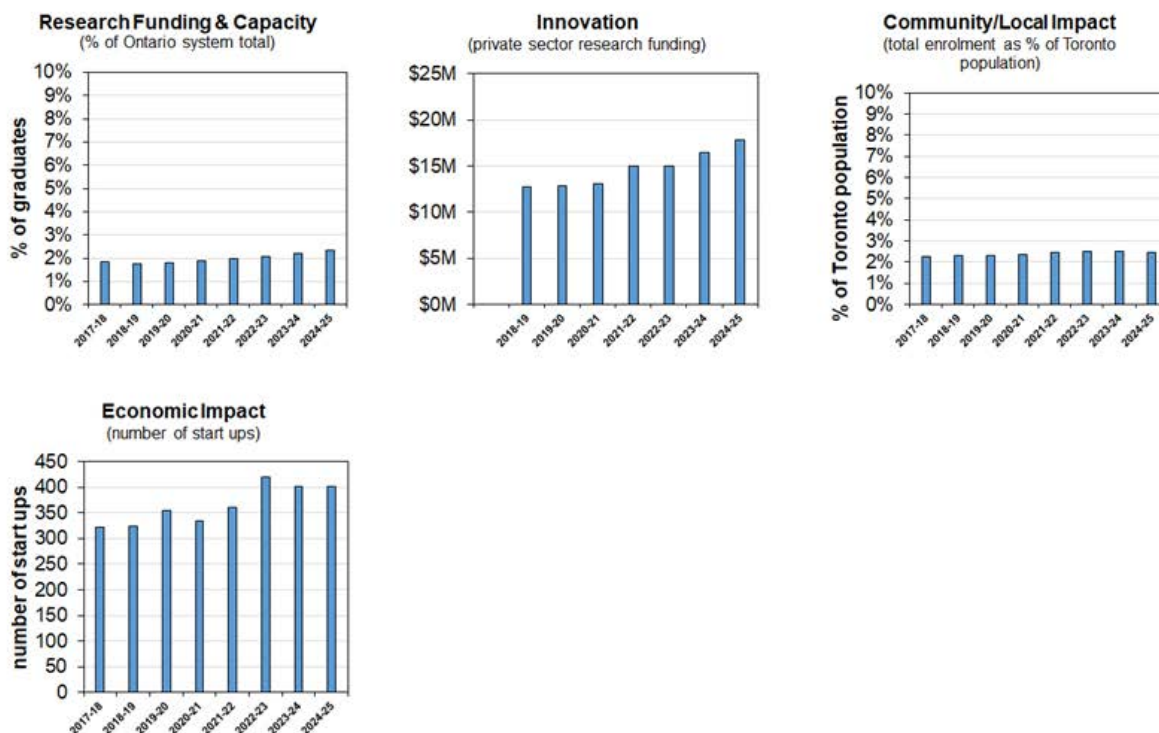
Source: TMU Financial Services Report

Figure 2.6 Strategic Mandate Agreement SMA3 Metrics



Source: Ministry of Colleges, Universities, Research Excellence and Security

Figure 2.6 Strategic Mandate Agreement SMA3 Metrics (Cont'd)

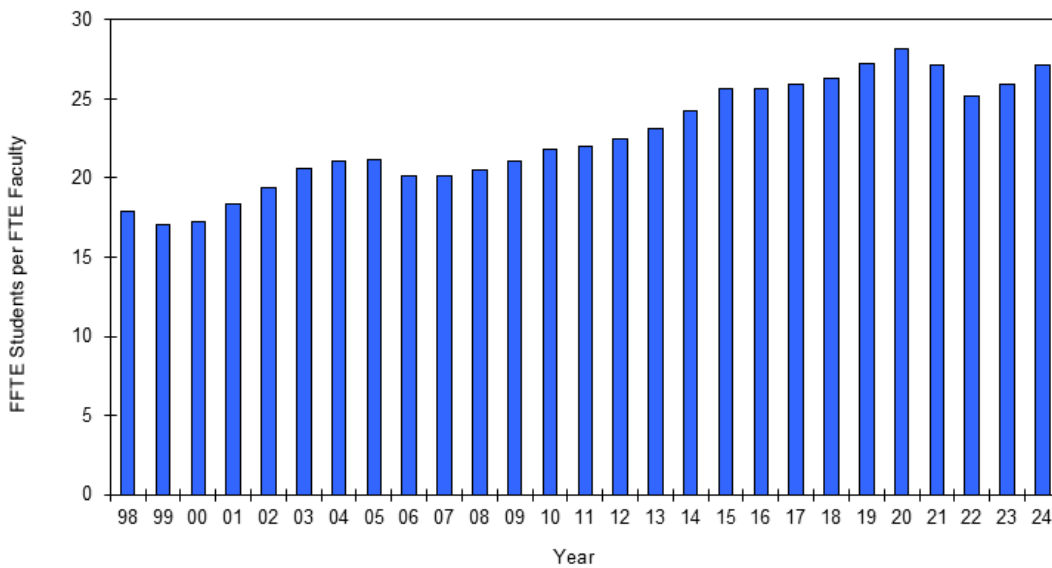


Source: Ministry of Colleges, Universities, Research Excellence and Security

Effective Management Indicators

Figure 3.1

Student : Faculty Ratio

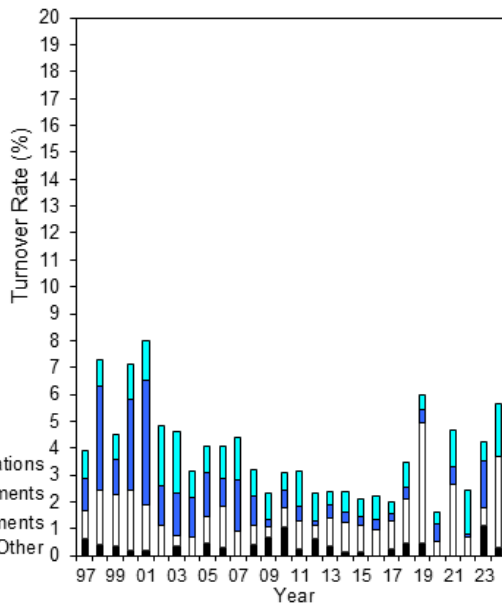


Note: Faculty comprises TFA affiliated with teaching departments and full-time equivalent (based on academic course hours) CUPE positions; excludes students and faculty in Chang School of Continuing Education

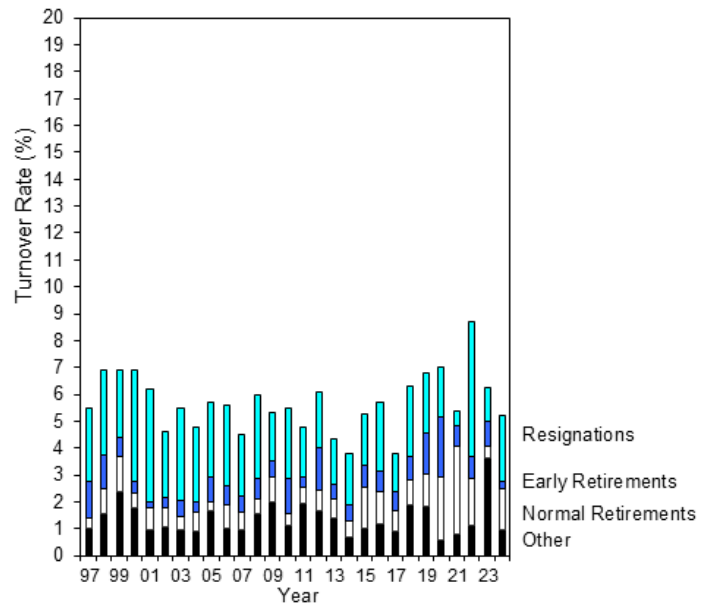
Sources: TMU Student Information System; TMU Human Resources data

Figure 3.2

Faculty Turnover Rate



Staff Turnover Rate

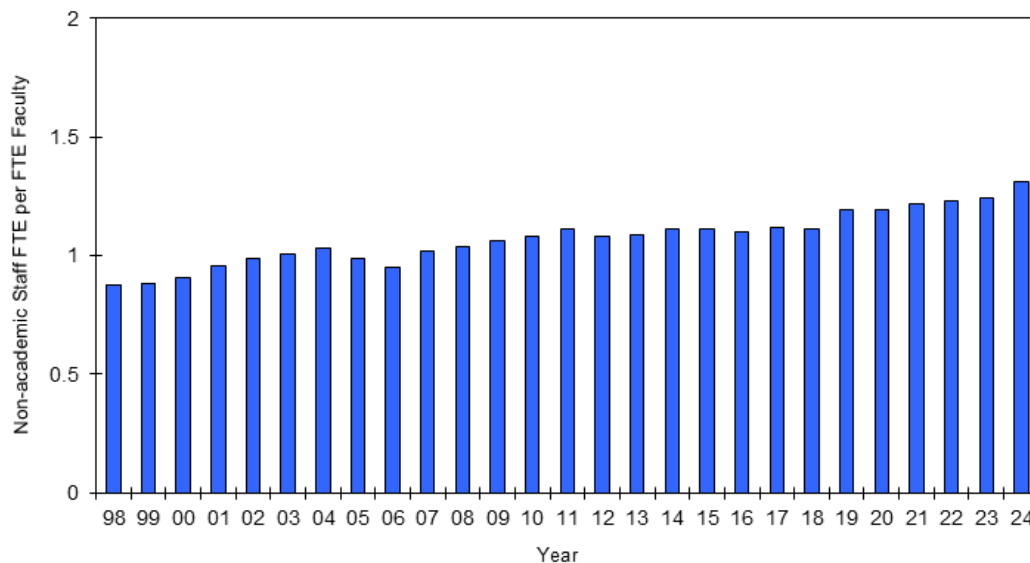


Note: Faculty turnover rate calculated across tenure-stream faculty; staff turnover rate calculated across all full-time career and partial year employees in OPSEU Local 596, MAC Group, and CUPE Local 233; "Other" includes redundancies, deaths, and terminations; fiscal year beginning in year shown.

Source: TMU Human Resources data

Figure 3.3

Staff : Faculty Ratio

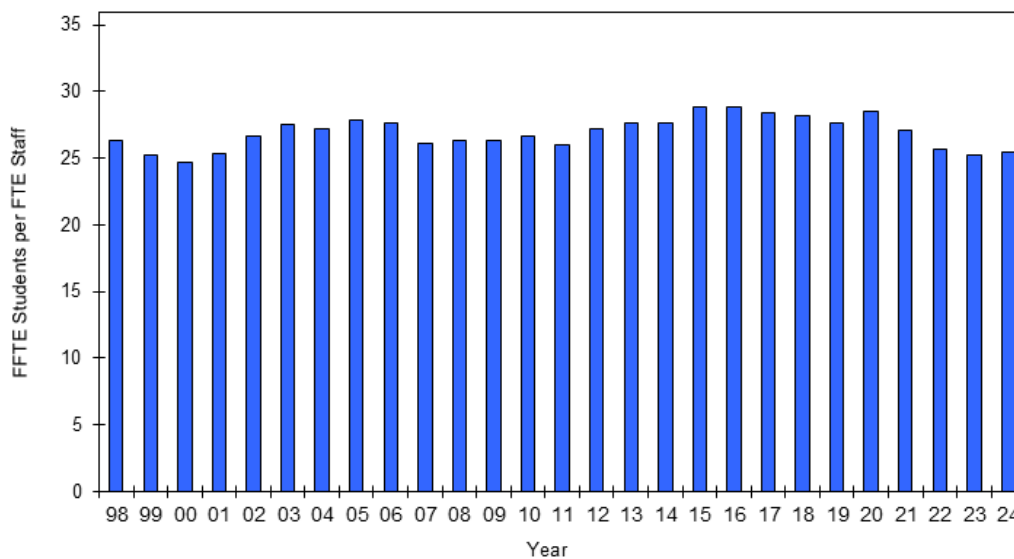


Note: Faculty comprises TFA affiliated with teaching departments and full-time equivalent (based on academic course hours) CUPE positions; the staff FTE includes Chang School of Continuing Education FTE but the faculty count does not.

Source: TMU Human Resources data

Figure 3.4

Student : Staff Ratio

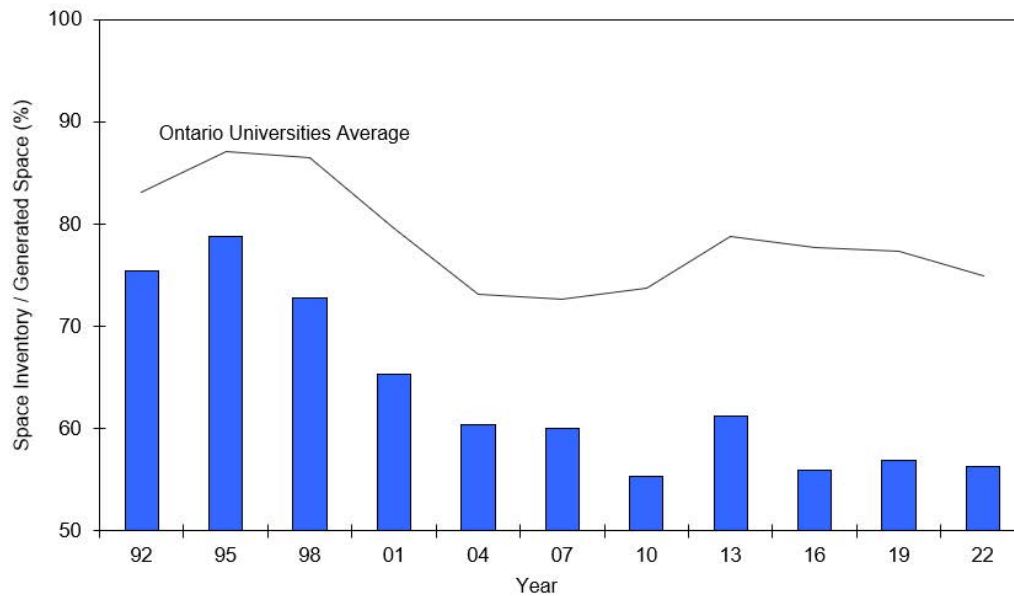


Note: Staff FTE and FFTE Students both include Chang School of Continuing Education

Source: TMU Student Information System; TMU Human Resources data

Figure 3.5

Actual Space Inventory versus Space Guidelines Calculated by Council of Ontario Universities



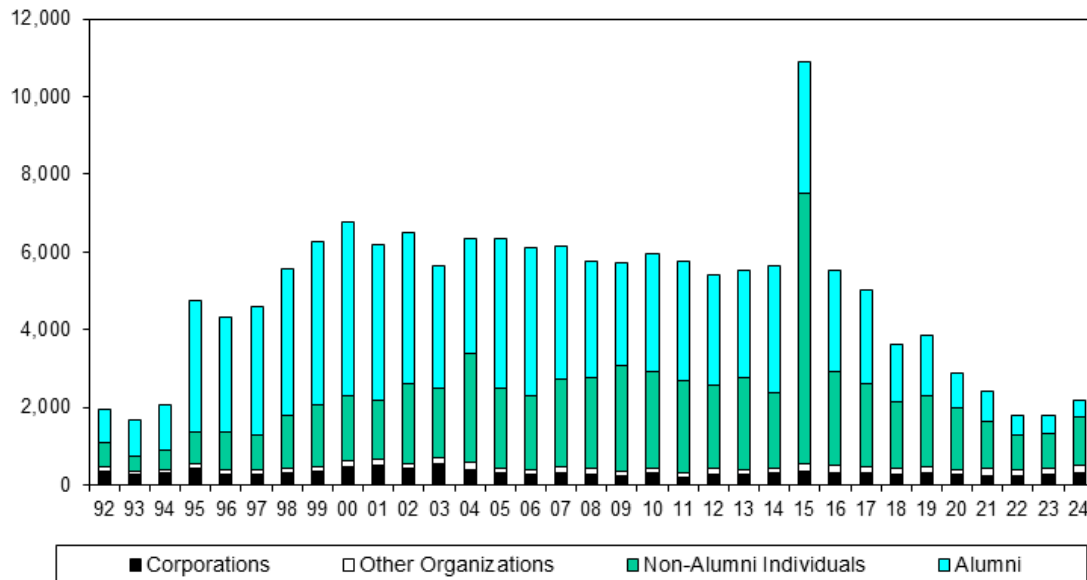
Note: Space guidelines as generated by Council of Ontario Universities Building Blocks method.

Source: Council of Ontario Universities (triennial)

University Profile Indicators

Figure 4.1

Annual Number of Donors

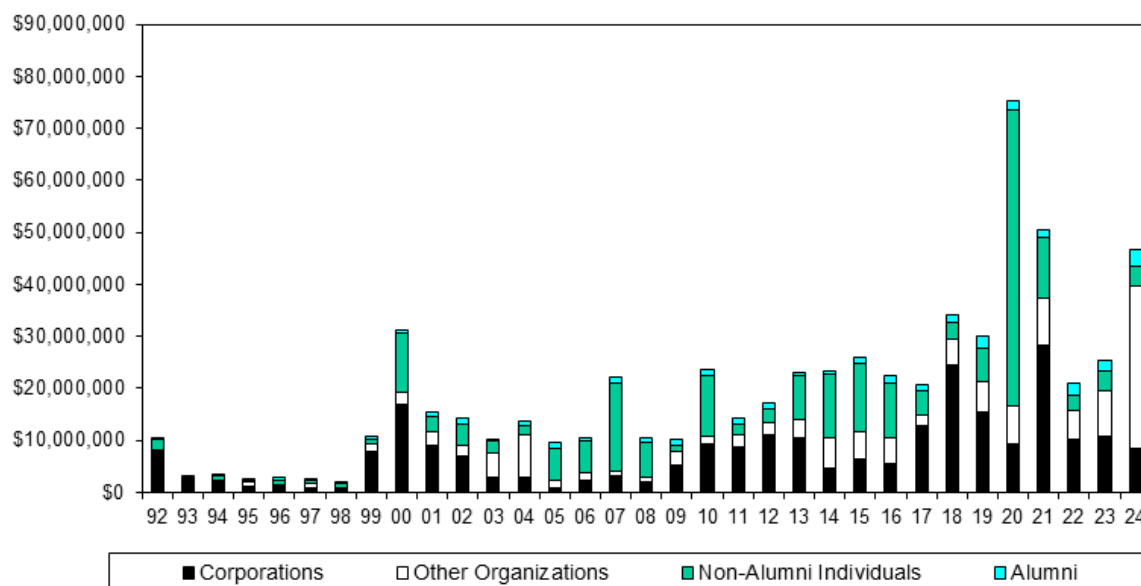


Note: Includes payments by cash, cheque, credit card, payroll deductions, securities, and gifts in kind; other organizations includes associations/societies, foundations and organizations. Lifeline Syria initiative accounted for 4,946 (2015-16), 604 (2016-17), and 6 (2017-18) non-alumni individual donors. Fiscal year beginning in year shown.

Source: TMU Office of the Vice-President University Advancement and Alumni Relations

Figure 4.2

Annual Level of Donation Commitments

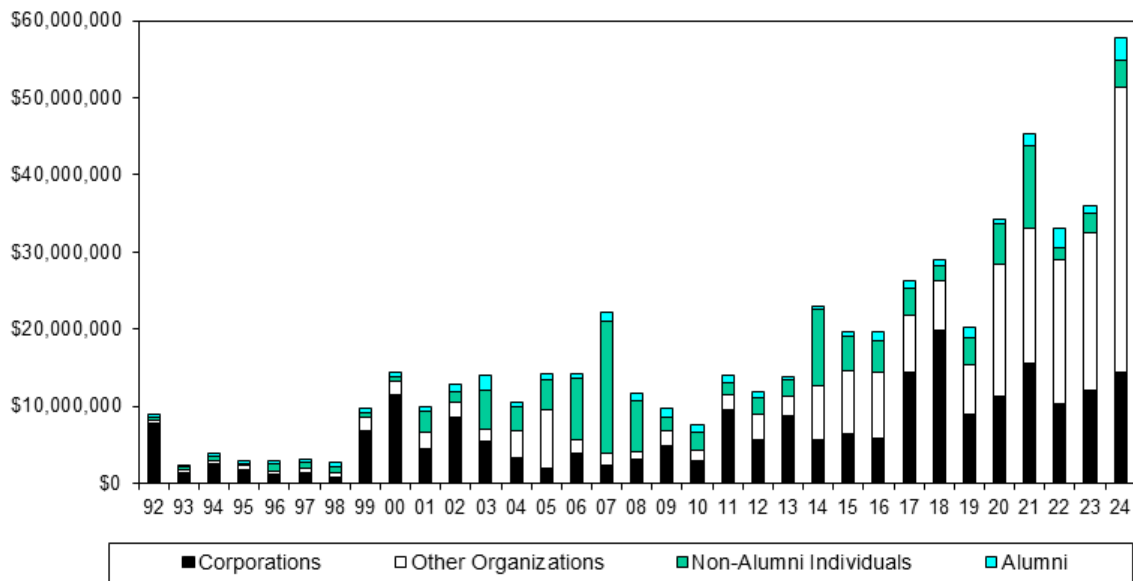


Note: Includes donation commitments in cash, cheque, credit card, payroll deductions, securities, and gifts in kind; other organizations includes associations/societies, foundations and organizations; full value of multi-year commitments reported in the fiscal year in which commitment first made. Lifeline Syria initiative accounted for \$3.57 million (2015-16), \$0.42 million (2016-17), and \$38,040 (2017-18) from non-alumni individuals. Fiscal year beginning in year shown.

Source: TMU Office of the Vice-President University Advancement and Alumni Relations

Figure 4.3

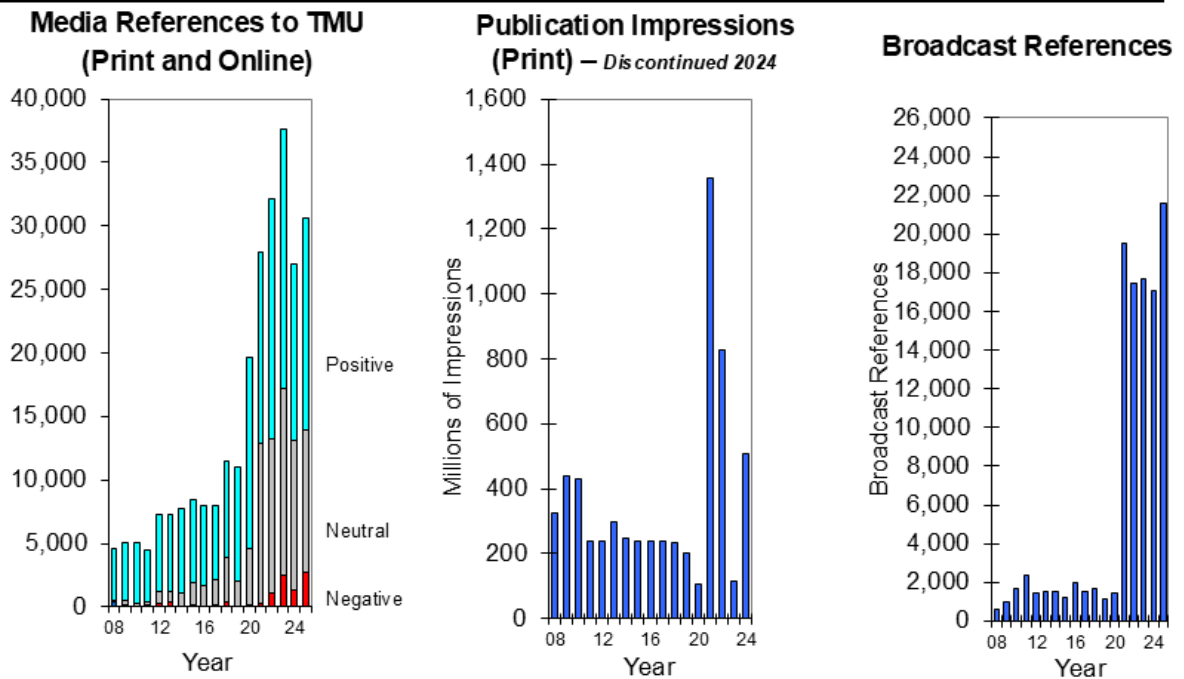
Annual Level of Donations Received



Note: Includes payments by cash, cheque, credit card, payroll deductions, securities, and gifts in kind; other organizations includes associations/societies, foundations and organizations. Lifeline Syria initiative accounted for \$3.01 million (2015-16), \$0.54 million (2016-17), \$29,205 (2017-18), and \$25,000 (2018-19) from non-alumni individuals. Fiscal year beginning in year shown.

Source: TMU Office of the Vice-President University Advancement and Alumni Relations

Figure 4.4



Note: In 2021, the Central Communications unit changed its data vendor to Meltwater. Meltwater currently has the world's largest media source base and its greater capacity for capturing media coverage accounts in large measure for the order of magnitude increase over prior years. The improved coverage for 2021 and future years does come at the expense of direct comparison to 2020 and earlier. Changes to the media landscape (mergers, closures, downsizing) are a factor contributing to any decreases in overall media coverage.

Source: TMU Central Communications