

THE URBAN PSYCHOLOGIST

Volume 4: Issue 1

Fall 2011



IN THIS ISSUE:

Chair's Corner	1
Dr. Frank Russo Wins ERA Award	1
Awards	1
GradNotes	2
Researchers Use ERP to Study Brain	2
BA Program Updates	3
Clinical Workshop: CPT for Trauma	3
Psych and Law at Ryerson	4
PGSA Message	4
Psychology in the News	4
Welcome New Faculty & Post-Docs	5
Welcome New Grad Students	6
PSA Message	7
Grants	7
Publications & Announcements	8

awards

Dr. Martin Antony has just received the 2011 Champion of Mental Health Award for Research from the Canadian Alliance for Mental Illness and Mental Health (CAMIMH). This is the first time a Psychologist has won this award. Previous "Champions of Mental Health" include Stephen Harper, Romeo Dellaire, and Margaret Trudeau.

Congratulations to **Brian Mainland** (PhD-2), **Katie Fracalanza** (PhD-2), and **Sarah Royal** (PhD-2), who each received the Canadian Psychological Association's 2011 Certificate of Excellence for their Masters theses. Congratulations also to **Stéphanie Marion** (PhD-2) who was one of five individuals from across the university to receive the Learning and Teaching Office's TA/GA award for 2010-2011. The award was received for her work in the course Introduction to Research and Statistics (ACS 401).

See "NOTE" on page 8.

Chair's Corner

by **Dr. Martin Antony**, Department of Psychology Chair



Welcome to the first issue of The Urban Psychologist for the 2011-2012 academic year. This is also my first column as Chair of Psychology. Our previous Chair, **Dr. Jean-Paul Boudreau**, became Dean of Arts on August 1, 2011. During Dr. Boudreau's tenure as Chair, the Department of Psychology experienced a period of unprecedented growth. We hired 21 new tenured or tenure track faculty, launched three new degree programs (BA, MA, PhD) in Psychology, secured more than 10,000 square feet of new research space, and witnessed a dramatic surge in new grants and publications generated in the Department, all while maintaining our excellent reputation for high quality teaching. During Dr. Boudreau's 8 years as Chair, Psychology was transformed from a relatively small unit that primarily served the teaching needs of other Ryerson programs to one of the University's largest and most research intensive departments. In a few short years, our new undergraduate and graduate programs have established excellent reputations, both within the University and across Canada. On behalf of our faculty members and students, I would like to thank Dr. Boudreau for providing a stimulating environment in which these changes could happen. And, of course we look forward to working with Dr. Boudreau in his new capacity as Dean. Over the next 5 years, I will make every effort to ensure that we have the resources needed to support our recent expansion, while taking advantage of new opportunities for growth that may arise. We are at a very exciting point in our development. Our faculty and students are second to none, and I can't think of a more rewarding opportunity than to serve the Department as Chair.



Dr. Frank Russo Wins Prestigious ERA Award

Dr. Frank Russo is the recipient of an Early Researcher Award from the Ontario Ministry of Research and Innovation. The highly competitive program helps promising, recently-appointed researchers in Ontario build their research teams. Over the next 5 years,

Russo and a team of 12 student researchers, from the undergraduate to postdoctoral level, will track the eye movements, facial muscles, and brainwaves of participants observing emotional song and speech. The team believes that the neural simulation of expressed emotion allows an observer to better understand emotional nuance and that this simulation can be supported by auditory, visual, and vibro-tactile information. Dr. Russo joins Drs. Colleen Carney and Ben Dyson, as the third Psychology faculty member to currently hold ERA funding at Ryerson University.



GradNotes



Dr. Martin M. Antony,
Director of Graduate
Program



Dr. Candice Monson,
Director of Clinical
Training



Dr. Frank Russo,
Director of Psychological
Science Training

Psychology Training Clinic is Open for Business

In June 2011, our first cohort of 14 clinical psychology students began placements in our new Psychology Training Clinic, based in St. Michael's Hospital's Department of Family and Community Medicine, under the direction of Dr. Shaun Burns. This is Canada's first Psychology Department Training Clinic located in a hospital and based in a primary care setting, providing state-of-the-art interprofessional training.

Psychological Science Lab Tours (Thursday October 20, 4:30 - 6:00 pm)

This event provides potential applicants to our Psychological Science program with an opportunity to visit our labs, interact with faculty, and meet with students currently enrolled in our MA and PhD programs in Psychological Science. Three core areas that will be highlighted include Developmental Psychology, Brain/Perception/Action/Cognition, and Social Psychology. Additional Information can be found at on our website (www.ryerson.ca/psychology/graduate).

Recent Appointments

Congratulations to Brian Mainland (PhD-2) who was recently selected as Graduate Student Representative on the CPA Accreditation Panel. The position will involve reviewing accreditation applications from across Canada, including new applications and applications for renewal. As part of this new role, Brian will attend Accreditation Panel meetings in Ottawa twice annually.

Open House and Information Session (Thursday October 20, 6:30 - 8:30 pm)

This event is open to all potential applicants to our MA and PhD programs, including those interested in Psychological Science and/or Clinical Psychology. The first hour will include a presentation by Dr. Martin Antony (Graduate Program Director). After the presentation, there will be an opportunity to meet informally with faculty members and current graduate students. Refreshments will be served. Additional Information can be found at on our website (www.ryerson.ca/psychology/graduate).

Ryerson Researchers use “ERP” to Study the Brain



PhD Student Holly Bowen sets up a participant in the new ERP Lab at the PRTC.

In January of this year, the newly renovated “ERP Lab” opened in the Psychology Research and Training Centre at 105 Bond Street. ERPs, or event-related potentials, are a noninvasive way to measure the brain's electrical activity. Special sensor caps worn by participants pick up on the moment-by-moment electrical changes that occur in the brain as it processes information.

The ERP Lab has quickly become a beehive of activity, with researchers from several labs in the Psychology Department taking advantage of this opportunity to peer into the inner workings of the brain. **Dr. Meg Moulson's** team in the Brain and Early Experiences (BEE) Lab is testing infants, children, and adults in order to investigate how the brain responds to faces, and how this changes during development. Research by **Dr. Ben Dyson's** Human Experimental Auditory Research (HEAR) Lab looks at how the brain responds to ambiguous visual and auditory information, such as the classic face/vase illusion. The Science of Music Auditory Research, and Technology (SMART) Lab, headed by **Dr. Frank Russo**, is using the ERP Lab to investigate the involvement of the mirror neuron system in the perception of music, dance, and speech.

These diverse, ongoing research projects in the ERP Lab are part of a new wave of high-tech research being conducted in the Department of Psychology.

BA PROGRAM Updates



Dr. John Turtle
Undergraduate
Program Director



Dr. Michelle Dionne
Undergraduate Thesis
Coordinator

Orientation Activities

Psychology held three very successful orientation related events for our undergraduate program in August. The Enrollment Workshops were on August 16, providing an opportunity for new students to learn about our curriculum, how to use RAMSS, and other valuable tips for navigating the administrative side of their university experience. The inaugural Psychology Day for new students was on August 25, and was organized and funded entirely by the Psychology Students' Association (PSA). It was a great opportunity for our incoming students to socialize with their peers, learn a bit about psychology from the student perspective, and generally have a lot of fun. Finally, there was our official Orientation Day on August 30, again with help from staff, faculty and students. These events are expertly organized by a host of individuals from a variety of offices at Ryerson, so much thanks to them for a great job!

Ontario Universities Fair and Discover Ryerson

These are two of the most important annual recruitment and promotion events for our undergraduate program. The Universities Fair occurred on October 14 – 16, a little later in the fall compared to past years, with a full complement of faculty, staff and current students from Psychology helping to inform prospective students about the program, and Ryerson in general. The Fair will be followed by two Discover Ryerson days on November 10 and 24 for students to visit the campus and learn more about their programs of interest. Again, faculty, staff and students play an important role, especially the PSA.

Congratulations

Congratulations to our 2010-11 thesis students **Molly Atwood**, **Jennifer Belus**, and **Nathalie Burnier** who each received the Canadian Psychological Association's Certificate of Excellence Award earlier this year.

Fall Convocation

Fall convocation for both undergraduate and graduate programs in Psychology will occur on October 20 at 2:30pm. Congratulations to all of our recent graduates!

Honours Thesis Stream

This year, 19 of our top senior undergraduate students are completing a thesis under the supervision of a faculty member in Psychology. Proposed research will be publically presented in concurrent sessions on November 25. Interested in doing a thesis? The PSA sponsors workshops each term to promote the thesis stream as an option for psychology students who are still in the early days of their degree. These workshops cover everything from how to get research experience, to the procedure for making an application to the thesis stream itself. The Fall workshop was held Oct 17th, and the next will be held in February. Watch for details TBA.

Clinical Workshop on Cognitive Processing Therapy for Trauma



Dr. Candice Monson, our Director of Clinical Training, will be providing a 2-day workshop on Cognitive Processing Therapy (CPT) for Trauma to students, faculty, and professionals in the community on November 28-29, 2011. CPT is a 12-session manualized psychotherapy that focuses on clients' trauma-related thoughts that prevent recovery from traumatic events. It is recommended as a front-line intervention for PTSD in a number of treatment guidelines. Dr. Monson is one of the co-developers of CPT, testing its efficacy in randomized controlled trials and studying its implementation in several healthcare systems. Proceeds from the workshop will

fund scholarships for Ryerson graduate students to present their research at professional conferences in Canada and abroad. More information on the workshop can be found on our Department website including how to register. [www.ryerson.ca/psychology]

Psychology & LAW at Ryerson

Ryerson University is quickly becoming a leading institution for the study of psychology and the law with teams of dedicated researchers focusing on issues relating to forensic, criminological, and investigative psychology.

The Criminal and Investigative Psychology Group International

(Director: **Dr. Alasdair M. Goodwill**) focuses on the pragmatic use of psychological and criminological theories, research and practice to aid in police investigations, particularly in the prioritization of suspects. Our research attempts to bridge the gaps among quantitative research, academic enquiry and police investigations in the context of a scientist-practitioner model. Our current research focuses on routine activity approaches to geographical profiling, polymorphism and victim targeting, behavioral consistency, and novel methods of statistical analysis of crime scene information.

The aim of the **Psychology of Crime and Delinquency Lab** (Director: **Dr. David Day**) is to understand criminal offenders and the offences they commit, particularly from a developmental perspective. Informed by both developmental and criminological

theories, examining pathways that lead to the onset and maintenance of criminal behaviour is vital for developing effective early intervention and prevention programs. Our research has found that early risk factors (e.g., child maltreatment and involvement with alternative care, including residential or foster care) are associated with increased likelihood of violence perpetration, peer victimization, and high rate persistent offending. We are also examining relations between risk of offending and rate of offending across the life span.

The Psychology and Law Lab (Director: **Dr. Tara Burke**) focuses on factors leading to wrongful convictions. From a research (and practical) perspective, it is important to understand why such miscarriages of justice occur. In our research, we have found that many of those falsely convicted provided a truthful alibi, but were ultimately not believed, by either the police or a jury. Many of our current studies explore why alibis are negatively perceived within the justice system, while in other related research we look more closely at the jury-decision making process, and how individuals decide whether or not someone is telling the truth.

PGSAmessage



LISA CHAN
PHD STUDENT
PGSA PRESIDENT

The PGSA kicked off the school year with a Welcome Back/Meet and Greet Pub Night following the Orientation Day for new students, and we were thrilled at the great turnout! Currently, the council is busy planning the 3rd Annual Research Symposium Day, taking place on October 25, 2011. The event will showcase graduate student research through a number of talks and poster presentations, and will feature guest speaker Dr. Steve Joordens, who will talk about Education and Technology.

Following the symposium, the PGSA will hold elections for the new 2011-2012 executive council. Getting involved in the PGSA is a great way to support graduate students in Psychology by developing new initiatives and ensuring that our most popular traditions continue.

PSYCHOLOGY IN THE NEWS

Below is a small sample of media appearance by members of the Psychology Department over the Summer and Fall.

July 4, 2011

Out of Their Minds (CBC Radio)

Dr. Frank Russo was featured in a documentary on the Emoti-Chair, which provides a new opportunity for deaf people to experience music.

www.cbc.ca/outoftheirminds/2011/07/04/episode-2---come-to-your-senses/

July 29, 2011

The Agenda (TV Ontario)

Dr. Tara Burke was featured in segment entitled "The Debate: DNA-Perfect Evidence?" on the use of DNA evidence in criminal cases.

www.tvo.org/cfm/x/tvoorg/theagenda/index.cfm?page_id=7&bpn=109255&ts=2011-07-29%2020:00:00

July 28, 2011

Macleans Magazine

Dr. Martin Antony's recent book, *Overcoming Health Anxiety: Letting Go of Your Fear of Illness* (co-authored with Dr. Katherine Owens) was featured in an article.

www2.macleans.ca/2011/07/28/when-every-headache-is-a-brain-tumour/#more-205632

September 15, 2011

Toronto Life

Dr. Colleen Carney was featured in an article on chronic insomnia.

www.torontolife.com/daily/informer/from-print-edition-informer/2011/09/15/i-hate-the-night/

September 27, 2011

Psychology Today

A new research article on bird songs co-authored by **Dr. Frank Russo** was featured in an article on the bodily origins of song structure.

www.psychologytoday.com/blog/why-music-moves-us/201109/the-bodily-origins-song-structure

September 29, 2011

Metro Morning (CBC Radio)

Dr. Shaun Burns and **Angela Lachowski** were interviewed about our new Psychology Training Clinic, launched in collaboration with St. Michael's Hospital.

www.cbc.ca/metromorning/episodes/2011/09/29/psychological-help/

New Faculty in Psychology!



ALBA AGOSTINO

Dr. Agostino completed her PhD in Psychology at York University, and postdoctoral training at the University of Guelph and the Hospital for Sick Children, in Toronto. She recently began a limited term appointment as an Assistant Professor in the Department of Psychology at Ryerson

University, where she is investigating the development of children's early sense of numbers. Preschoolers develop an impressive array of informal math abilities (e.g., counting and basic nonverbal calculations) before formal schooling begins, and Dr. Agostino's research will contribute to a growing literature on preschoolers' informal mathematical skills, to identify early cognitive precursors of low math achievement.



STEPHANIE CASSIN

Dr. Cassin received her PhD in Clinical Psychology from the University of Calgary. She completed an accredited internship at the University of British Columbia, followed by a 3-year OMHF funded postdoctoral fellowship at Sunnybrook Health Sciences Centre. She has held staff psychologist

positions at the Centre for Addiction and Mental Health and the Bariatric Surgery Program at Toronto Western Hospital. Her program of research focuses on eating disorders and obesity. She is particularly interested in the impact of psychosocial factors and readiness for change on treatment outcome, as well as treatment approaches aimed at enhancing readiness for change.



ALEXANDRA FIOCCO

Dr. Fiocco obtained an MSc in Psychology at Carleton University in 2002 and a PhD in Neuroscience at McGill University in 2008. Following her graduate studies, Dr. Fiocco underwent 2 years of postdoctoral training at the University of California, San Francisco, where she learned clinical and

epidemiological research methods. Before joining the team at Ryerson University, Dr. Fiocco pursued a second postdoctoral training position at Baycrest Hospital in Toronto to learn imaging techniques. Dr. Fiocco's research program at Ryerson University focuses on brain health and well-being in older adults, investigating the biological, psychological and social factors that determine cognitive and emotional well-being in late life.



BRAD MEISNER

Dr. Meisner received his Honours BSc in Psychology (Neuroscience) and Health Studies from the University of Toronto, after which he received his MSc in Social Epidemiology and PhD in Health Psychology, both from York University. He recently began a limited term appointment as an Assistant

Professor in the Department of Psychology at Ryerson University. His research draws on his interdisciplinary expertise in adult development and aging, and focuses on the areas of health, social, and positive psychology to study and promote, "successful aging" among middle-aged and older adults.

New Postdoctoral Fellows!



Paolo Ammirante received his PhD at Macquarie University in Sydney. He is investigating how listeners respond to expressive aspects of music performance such as variation in timing and loudness in Dr. Russo's SMART lab.



Steven Livingstone received his PhD in computer science from the University of Queensland. His research with Dr. Russo in the SMART Lab examines the role of facial mimicry in response to facial and vocal expressions.



Nicole Pukay-Martin received her PhD in clinical psychology from the University of North Carolina-Chapel Hill. She is investigating interpersonal factors involved in the development and maintenance of PTSD in Dr. Monson's IMPACT Lab.



Suzanne Stone received her PhD at Lakehead University. She is currently working with Dr. Antony in the Anxiety Research and Treatment Lab, on a CIHR-funded project investigating the effects of motivational interviewing and cognitive behavioural therapy on severe generalized anxiety disorder.

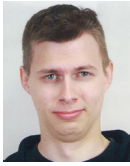


Naresh Vempala received his PhD in Cognitive Science from the University of Louisiana at Lafayette. He is a MITACS Elevate postdoctoral fellow, working in the SMART lab with Dr. Russo and is using computational modelling to investigate music information retrieval.

Maintaining our reputation for excellence in teaching: We are delighted to have the following part-time instructors with us this Fall: **Dr. Gabriella Ilie** (PhD, UofT); **Dr. Ayesha Khan** (PhD, McMaster); and **Dr. Laurel Johnson**, (PhD, Guelph).

New Graduate Students

NEW MA STUDENTS

**Jared Allen, PSY SCI (A. Goodwill)**

Jared received his Honours BA in Psychology from York University. He works with the Criminal and Investigative Psychology Group International (CIPGI), conducting both basic and applied research in modelling, profiling, and research methods.

**Zara Chan, PSY SCI (B. Dyson)**

Zara received her Specialized Honours BA in Psychology from Glendon College, York University, and is currently a student in the HEAR lab. Her research interests are auditory perception and cognitive processes, and she looks forward to working in these areas.

**Jill Dosso, PSY SCI (J.P. Boudreau)**

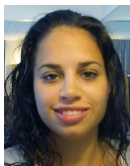
Jill received her BSc in Biology from the University of Lethbridge. Her research interests on the relationship between motor actions and cognition, and she plans to study these variables with infants in the CHILD lab.

**Skye Fitzpatrick, CLIN (J. Kuo)**

Skye completed her honours BA in Psychology from Dalhousie in 2011 and began working in the Borderline & Emotion Processing Lab. She is interested in emotion regulation, posttraumatic stress disorder, and dissociation as they pertain to borderline personality disorder.

**Sara Gallant, PSY SCI (L. Yang)**

Sara recently earned her Honours BA in Psychology from the University of Windsor. She is now a member of the Cognitive Aging Lab, where she plans to research emotional processing and inhibition in older adults.

**Jennifer Khoury, CLIN (L. Atkinson)**

Jennifer completed her Honours BSc from the University of Toronto with a Specialist in Psychology. Her research is based in the Biopsychosocial Development Lab, where she plans to study emotion regulation and stress responses in infants.

**Leann Lapp, CLIN (J. Spaniol)**

Leann completed her BA/BSc at McGill and MSc in Brain & Mind Sciences at the University College London (UK) and the Université Pierre & Marie Curie (France). Leann joined the Memory & Decision Processes Lab, where she studies the effects of personality & reward on memory across the lifespan.

**Elizabet Liskovoi, PSY SCI (F. Russo)**

Elizabet graduated with an Honours BA in Psychology in 2010 from Bishop's University. She recently joined the SMART lab, where she will continue her research on the connections between language and music cognition.

**Lisa Mark, CLIN (D. Day)**

Lisa completed her Honours BA in Psychology at the University of Western Ontario. She plans to conduct research in the Psychology of Crime and Delinquency Lab on the assessment of the risks and needs of offenders.

**Kyla McDonald, PSY SCI (L. Ma)**

Kyla completed her Hon. BSc at Trent University where she developed an interest in the early development of children's social cognitive processes. Kyla is currently working in the Early Childhood Cognition lab where she will explore the development of trust in children.

**Katlyn Peck, PSY SCI (F. Russo)**

Katlyn received her BA in Psychology from Brock University. She recently joined the SMART Lab where she plans to study facial mimicry in response to audio and visual stimuli in relation to the mirror neuron system (MNS), and empathy.

**Shankari Sharma, CLIN (A. Goodwill)**

Shankari received her Hon. BA in Psychology from the University of Ottawa. She works with the Criminal and Investigative Psychology Group International (CIPGI), with interests in suspect identification and prioritization, investigative decision making, case linkage, and geographical profiling models.

**Lindsey Torbit, CLIN (S. Hart)**

Lindsey completed her BA in Psychology at McGill University and works in the Psychosocial Medicine Lab. Her research interests focus on how biomedical and psychosocial factors are associated with the health perception, behaviour and outcome of individuals.

**Tyler Tulloch, CLIN (T. Hart)**

Tyler holds Honours BA degrees in Psychology (Concordia University), and in Sociology (York University). He is currently working in the HIV Prevention Lab and plans to examine the link between bullying and high-risk sexual behaviour among men who have sex with men.

**Brenda Wong, PSY SCI (L. Yang)**

Brenda completed her Honours BSc in the Psychology Specialist Co-Op Program at the U of Toronto. She recently joined the Cognitive Aging Lab, and is interested in the role of aging differences in episodic memory across cultures.

NEW MA STUDENTS (continued)



Elizabeth Wong, PSY SCI (M. Dionne)

Elizabeth Wong graduated from Ryerson University with a BA in Psychology. She is currently pursuing research in the Health and Sport Psychology Lab. Her main interests are in the area of stereotypes and their effects on cognition and behaviour.



Dora Zalai, CLIN (C. Carney)

Dora earned her medical degree and psychology diploma in the European Union. She completed a fellowship in psychonephrology and subsequently worked in the neuropsychiatry program (in the area of sleep) at the University Health Network before joining the Sleep and Depression Lab. She is interested in studying cognitive behavioural treatment of fatigue in the medically ill.

NEW PhD STUDENTS



Matthew King, CLIN (T. Girard)

Matthew completed his Honours BSc in Psychology at the University of Toronto followed by an MSc in Neuroscience at McMaster University. He is presently working in the Brain, Imaging, and Memory Lab, where he will be investigating memory processes in schizophrenia.



Amy Usher, PSY SCI (K. McShane)

Amy received her Master's degree in counselling from the University of Ottawa and has been working as a research officer at the Correctional Service of Canada for the past 2 years. Her research interests include addictions, marginalized populations, mental health, and community based research.



JESSICA SUTHERLAND

4TH-YEAR BA STUDENT, PSA PRESIDENT

Another exciting year is upon us and the PSA decided to start it off with its first annual Psychology Day, an event held specifically for incoming first-year students outside of the traditional Orientation Week programming. Hosted by upper year students, Psychology Day started off with a breakfast mix and mingle, followed by a scavenger hunt led by faculty members, and tie-dye in the quad before heading to a nearby pub to introduce our students to the traditional university pub experience. A highlight of the day was Dr. Martin Antony, who gamely agreed to be a destination on the scavenger hunt asking students for help to answer the age-old question that has boggled psychologists since the days of Wilhelm Wundt: Which of the following personalities is NOT a Backstreet Boy?

PSAmessage

grants

Dr. Martin M. Antony (Co-Principal Investigator) received \$794,178 over 5 years from the Canadian Institutes for Health Research (CIHR) for a study entitled: *Adding Motivational Interviewing To Cognitive Behavioural Therapy For Severe Generalized Anxiety Disorder*. The principal investigator on the project is Dr. Henny Westra (York University). The study will be run out of both Ryerson University and York University, beginning in October 2011.

Dr. Morley Beiser from the Department of Psychology and Dr. Usha George, Dean of the Faculty of Community Services are Ryerson University's representatives on the Governing Committee for a new ongoing initiative, the Ontario Multicultural

Health Applied Research Network (funded by the Ontario Ministry of Health and Long term Care in September 2011. First year funding is \$125,000). Ryerson is the lead institution for this project, which also includes representatives from York University and Markham-Stouffville Hospital. Dr. Sepali Guruge, from Ryerson's Daphne Cockwell School of Nursing, is Director of the initiative.

Dr. Trevor Hart received a Career Scientist Award from the Ontario HIV Treatment Network, starting in April 2011, for a total of \$360,000 over 5 years. Dr. Hart received this award for his program of research on HIV Prevention With Men Who Have Sex With Men.

Dr. Margaret Moulson received \$53,604 in May 2011 from the Social Sciences and Humanities Council of Canada (SSHRC) for a 2-year study on cross cultural recognition of emotions in children and adults. Dr. Moulson is principal investigator for this project.

Drs. Frank Russo, Colleen Carney, Naomi Koerner, and Naresh Vempala recently received an Insight Development Grant for \$74,920 from the Social Sciences and Humanities Council of Canada (SSHRC) for a 2-year study on strategies for improving musical mood induction.

See "NOTE" on page 8.

books, journal articles, and other publications

Martin M. Antony & Roemer, L. (2011). Behavior therapy. Washington, DC: American Psychological Association.

Beech, A.R., Mandeville-Norden, R. & **Alasdair M. Goodwill** (in press). Comparing reconviction rates of treatment responders/nonresponders in a sample of 413 child molesters who had undertaken community-based sex offender treatment in the UK. *International Journal of Offender Therapy and Comparative Criminology*.

Holly J. Bowen & **Julia Spaniol** (in press). Chronic exposure to violent video games is not associated with alterations of emotional memory. *Applied Cognitive Psychology*.

Shaun M. Burns & Mahalik, J. R. (in press). Suicide and dominant masculinity norms among current and former United States servicemen. *Professional Psychology: Research and Practice*.

Colleen E. Carney, Buysse, D.J., Ancoli-Israel, S., Edinger, J.D., Krysl, A. D., Lichstein, K.L., & Morin, C.M. (in press). The Consensus Sleep Diary: Standardizing prospective sleep self-monitoring. *Sleep*.

Danielle E. Culp, **Stacey L. Hart**, **Jenna J. Albiani**, & Mohr, D. (2011). Improvements in partner support predict sexual satisfaction among individuals with multiple sclerosis. *Rehabilitation Psychology*, 56, 117-122.

Benjamin J. Dyson (2011). The advantage of ambiguity? Early neural responses to multi-stable percepts correlate with the degree of perceived instability. *Frontiers in Human Neuroscience*, 5, 73.

Katie A. Fracalanza, McCabe, R.E., Taylor, V.H., & **Martin M. Antony** (in press). Exploring the impact

of comorbid bipolar disorder in an anxiety disorders sample. *European Journal of Psychiatry*.

Matthew J. King, Williams, L.A., MacDougall, A.G., Ferris, S., Smith, J.R.V., Ziolkowski, N., & McKinnon, M.C. (in press). Patients with bipolar disorder show a selective deficit in the episodic simulation of future events. *Consciousness and Cognition*.

Lili Ma & Xu, F. (2011). Young children's use of statistical sampling evidence to infer the subjectivity of preferences. *Cognition*, 120, 403-411.

Danielle E. MacDonald (in press). Impossible bodies, invisible battles: Feminist perspectives on the psychological research and treatment of eating disorders in queer women. *Journal of Gay and Lesbian Social Services*.

Brad A. Meisner (in press). A meta-analysis of positive and negative age stereotype priming effects on behavior among older adults. *Journal of Gerontology: Psychological Sciences*.

Mileva-Seitz, V., Kennedy, J., **Leslie Atkinson**, Steiner, M., Levitan, R., Matthews, S.G., Meaney, M., Sokolowski, M. B., & Fleming, A.S. (2011). Allelic variation in the serotonin transporter gene is associated with maternal behavior and sensitivity. *Genes, Brain, and Behavior*, 10, 325-333.

Nguyen, D., Kemp, N. & **Stephen C. Want** (2011). The effects of funny and serious task content and expectations of fun versus importance on children's cognitive performance. *Australian Journal of Psychology*, 63, 154-162.

Meera Paleja, **Todd A. Girard**, & Christensen, B.K. (2011). Human analogs of rodent spatial pattern separation and completion memory tasks. *Learning and Motivation*, 42, 237-244.

Danielle R. Schwartz, James, C.A., **Anne C. Wagner** & **Trevor A. Hart** (in press). Sexual risk behaviours and sexual health outcomes among Canadian homeless youth. In M. Guirguis-Younger, S. Hwang, & McNeil, R. (Eds.), *Homelessness and Health in Canada*. Ottawa, ON: University of Ottawa Press.

Julia Spaniol & Grady, C. L. (in press). Aging and the neural correlates of source memory: Over-recruitment and functional reorganization. *Neurobiology of Aging*.

Tierney, A. T., **Frank A. Russo**, Patel, A. D. (in press). The motor origins of human and avian song structure. *Proceedings of the National Academy of Sciences*.

Sonya Wanklyn, **Ashley K. Ward**, **David M. Day**, **Nicole Cormier**, & **Jennifer Newman** (in press). Can we distinguish juvenile violent sex offenders, violent non-sex offenders, and versatile violent sex offenders based on childhood risk factors? *Journal of Interpersonal Violence*.

Leanne K. Wilkins, **Todd A. Girard**, & Cheyne, J.A. (2011). Ketamine as a primary predictor of out-of-body experiences associated with multiple substance use. *Consciousness and Cognition*, 20, 943-950.

Andrea J. Wilkinson, & **Lixia Yang** (in press). Plasticity of inhibition in older adults: Retest practice and transfer effects. *Psychology and Aging*.

Lixia Yang & **Tisha J. Ornstein** (2011) The effect of emotion-focused orientation at retrieval on emotional memory in young and older adults, *Memory*, 19, 305-313.

Lixia Yang, & Hasher, L. (2011). Age differences in the automatic accessibility of emotional words from semantic memory. *Cognition and Emotion*, 25, 3-9.

MAILING ADDRESS:

Department of Psychology
Ryerson University
350 Victoria Street
Toronto, Ontario
M5B 2K3 CANADA



other announcements & contributions

This Fall, nine Psychology faculty members were successful in their applications for the 2011-2012 Work Study Research Assistant Competition. Congratulations to **Drs. Leslie Atkinson, Michelle Dionne, Todd Girard, Maria Gurevich, Naomi Koerner, Janice Kuo, Lili Ma, Tisha Ornstein, and Julia Spaniol**.

Sage Publications recently announced that **Dr. Morton Beiser's** article, "Resettling refugees and safeguarding their mental health: Lessons learned from the Canadian refugee resettlement project" was the most downloaded article in 2010 (from among articles published in the journal *Transcultural Psychiatry* during either 2009 or 2010).

Dr. Shaun Burns was appointed to the Editorial Board of the *American Journal of Men's Health*.

Dr. Alasdair Goodwill was appointed Associate of the Centre for Investigative and Forensic Psychology (University of Liverpool)

Dr. Kelly McShane gave an invited presentation entitled *Tales of Transdisciplinary Research* in September 2011 to a group of residents, clinical fellows, and research fellows at the Centre for Addiction and Mental Health in Toronto. The presentation was organized through the Social Aetiology of Mental Illness (SAMI) CIHR Strategic Training Program.

NOTE: Gray boxed articles are partial lists of recent awards, grants, publications, and contributions. A full list will be available in the *Psychology Annual Report*, published each Summer, beginning in 2012.

QUESTIONS & COMMENTS:

For questions or comments regarding content or submissions for future editions, please feel free to contact us:

Martin M. Antony, Editor | mantony@psych.ryerson.ca

Michelle Dionne, Co-Editor | mdionne@psych.ryerson.ca

Lisa Vuong, Production Editor | lisa.vuong@psych.ryerson.ca

RYERSON
UNIVERSITY

www.ryerson.ca/psychology