



**Credit Valley
Conservation**
inspired by nature

Low Impact Development Performance Monitoring Lesson Learned through Implementation

June 18, 2018

Jennifer Dougherty
Manager, Water Quality Protection



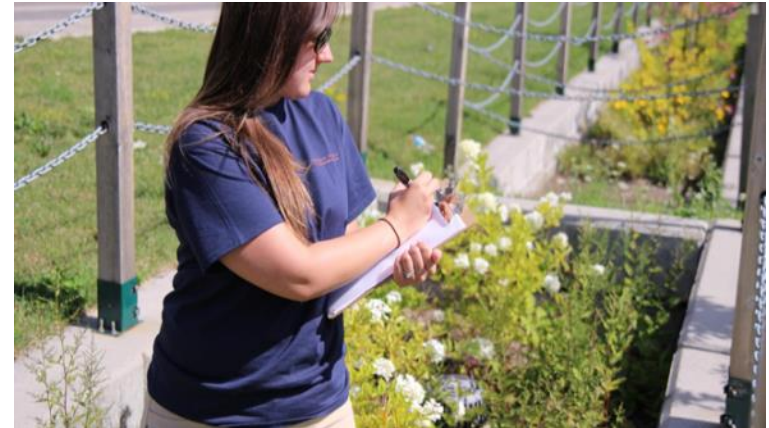
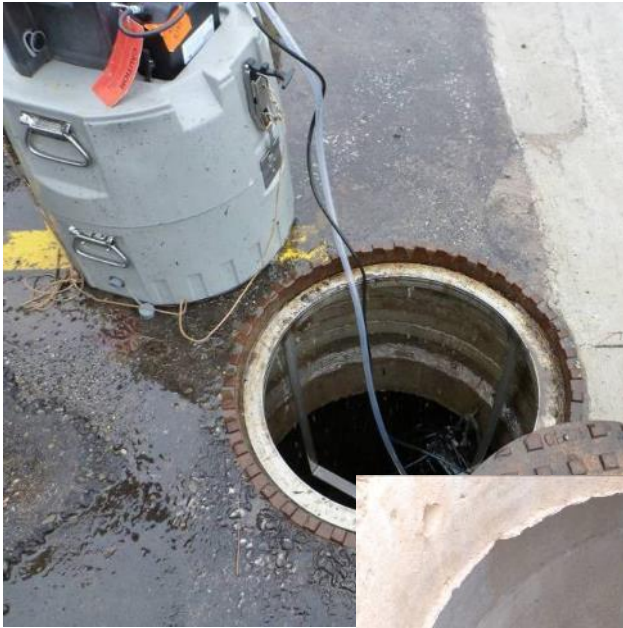
LID Monitoring Program

- 15 LID monitoring sites with 29 core monitoring stations

Many land use types

- Road Right of Way
- Residential
- Parks/Schools
- Commercial





Visual Observations and Measured Performance

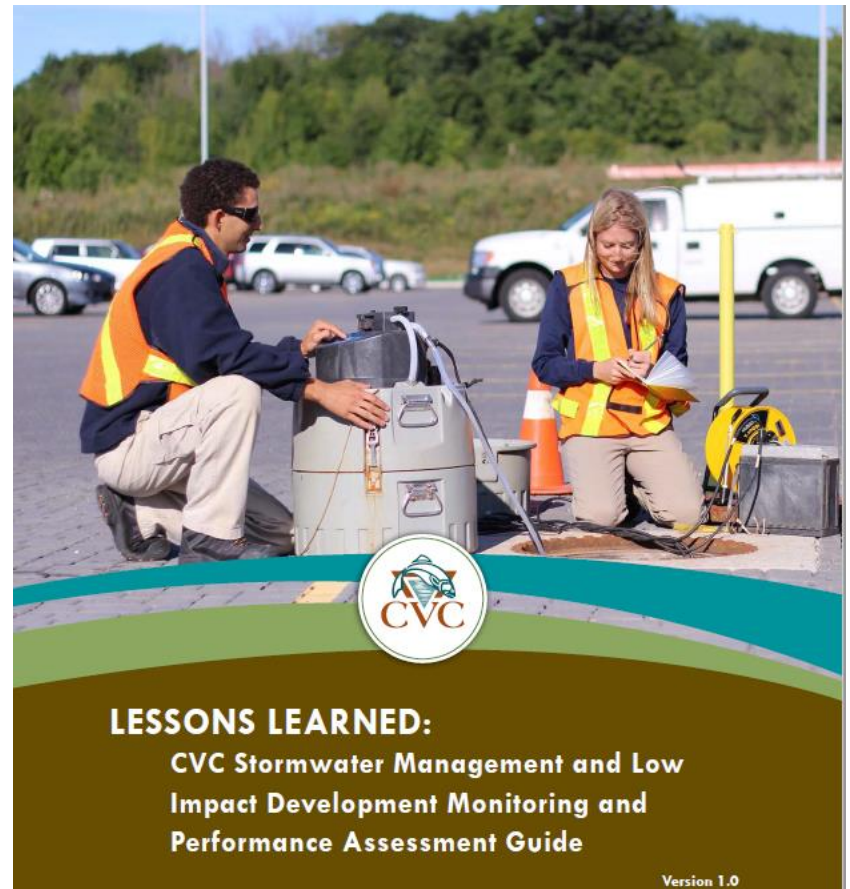
Inspection of site condition and Photo logs

LID Performance Results

Site	Volume Reduction	TSS Load Reduction	TP Load Reduction
Lakeview	92 %	93%	83%
IMAX Permeable Pavement (3 stations)	62-99%	93-99%	92-99%
IMAX Bioswales (3 stations)	64-90%	97-99%	57-90%
Riverwood	65%	89%	
Headoffice	67%	81%	69%

Building Confidence in LID

- Performance and maintenance monitoring results have helped overcome perceived barriers and build confidence in LID
- Valuable lessons learned were gained and help inform future designs and criteria for stormwater management



Elm Drive Demonstration site





Lesson Learned:

Designers – for retrofit designs
Go to the site- See how its being used before
selecting BMPs!
Selecting Improper BMP can be costly for O&M



Winter Maintenance

Plan for winter maintenance and snow storage when designing your site & communicate the plan to operations staff





Integration between Departments – Communication is Critical



**Asset Management and Life Cycle Planning –
Key to long term success**

Summary

- Performance Monitoring and Inspections can optimize future design, implementation & operation
- Understand how your site is or will be used to select proper BMPs and reduce O&M requirements
- Plan for winter operation and snow storage in design and site plan. Communicate this with winter operation staff /contractor
- Develop asset management tool to allow for seamless communication between departments/agencies/utilities

questions?

inspired by nature

