



BEAUTY TO BE RECOGNIZED

A CRIP FASHION SHOW

ACCESS GUIDE

Friday November 29th at 7pm
44 Gerard St. East, CUI 317

CREDIT: SINS INVALID



TABLE OF CONTENTS

1. INTRODUCTION

2 WHAT IS A CRIP FASHION SHOW?

2.WHAT IS A RELAXED PERFORMANCE?

3. WHAT IS A LAND ACKNOWLEDGEMENT?

4. WHAT DOES THE CENTRE FOR URBAN INNOVATION AT RYERSON LOOK LIKE?

5. ROUTE TO EVENT ROOM (ROOM CUI317)

10. CHILL ZONE

11. HOW WILL BEAUTY TO BE RECOGNIZED BE ACCESSIBLE FOR ME?

13. HOW CAN I MAKE THIS SPACE SAFER AND MORE INCLUSIVE?

14. WHAT ARE SOME TERMS THAT MAY BE USED/ DISCUSSED?

17. ICON CREDITS

18. NOTES



Introduction

Welcome! This Access Guide is for anyone attending the Crip Fashion Show on November 29, 2019. Inside, you will find information about the space in which the fashion show will be held and about other things you might want to know before coming to the event.

We hope you have a fabulous time!

Thank you to Kristina McMullin for helping us develop our access guide and to Crippling the Arts for providing a template for our access guide. Much of our format and wording is borrowed from Crippling the Arts Access Guide.

We are additionally grateful to our partnership with the British Council for supporting our use of Relaxed Performance in live fashion events.

- The *British Council* is the UK's international organisation for cultural relations and educational opportunities. We create friendly knowledge and understanding between the people of the UK and other countries. We do this by making a positive contribution to the UK and the countries we work with – changing lives by creating opportunities, building connections and engendering trust.

What is a Crip Fashion Show?



A Crip Fashion show is an inclusive, accessible fashion event that celebrates disability. Here you can gather together in a relaxed performance to have fun with fashion, celebrate your beauty, and be your authentic self. This is 'Beauty to be Recognized!' This name is inspired by the performance project Sins Invalid, and their often repeated phrase "beauty always, always recognizes itself." In this name we wish to recognize the beauty you bring into the world, and challenge the fashion industry to finally recognize expansive beauty.

What is a Relaxed Performance?



Relaxed Performance (RP) is an approach to theatre that welcomes everyone and works to make event-going accessible. It refers to the invitation for people to be themselves, including their movement and their vocalizations, in the event space. A performance in which there have been modifications to the environment and performance elements, such as loud noises and light displays. RP usually includes a chill out space, visual story, and introductions to cast prior to and at the end of the performance.

What is a Land Acknowledgement?



A land acknowledgement is an opening recognition about the land that we are gathered on. The land where the Crip Fashion Show is taking place has an important history, present and future that we need to understand and acknowledge. This land is called Turtle Island, and it is the original home of many Indigenous peoples. It is the unceded traditional territory of the Anishinaabe, the Haudenosaunee, the Wendat and the Mississaugas of the New Credit. We acknowledge and respect these nations as the past, present, and future tenets of this land. Toronto is located in the Dish With One Spoon Territory. The Dish with One Spoon is a treaty between the Anishinaabe, Mississaugas and Haudenosaunee that bound them to share the territory and protect the land. Subsequent Indigenous nations and peoples, refugees, immigrants, stateless people, and settlers have been invited into this treaty in the spirit of peace, friendship, and respect. We want to recognize that we are sharing this land on which Toronto sits with each other. What does this mean in practice? It means that as settlers and immigrants to this land, we work together as allies with Indigenous communities to center their voices, experiences, and histories. It means we work together to dismantle systemic structures of oppression and foster Reconciliation, and advance Indigenous sovereignty.

What does the Centre for Urban Innovation at Ryerson look like?

The Building:

There are two doors at the front of the building. The door on the left side will lead to a wheelchair accessible entrance. The doors are power automated.



An image of the Centre including some of the surrounding area for reference.

Entering the Building:

There are two doors at the front of the building. The door on the left side will lead to a wheelchair accessible entrance. The doors are power automated.



Entrance to the Centre.

Entrance:

The entrance has a ramp for accessibility. Once you go through the main door, you will be in a small lobby room. There will be a door to get to the hallway space.

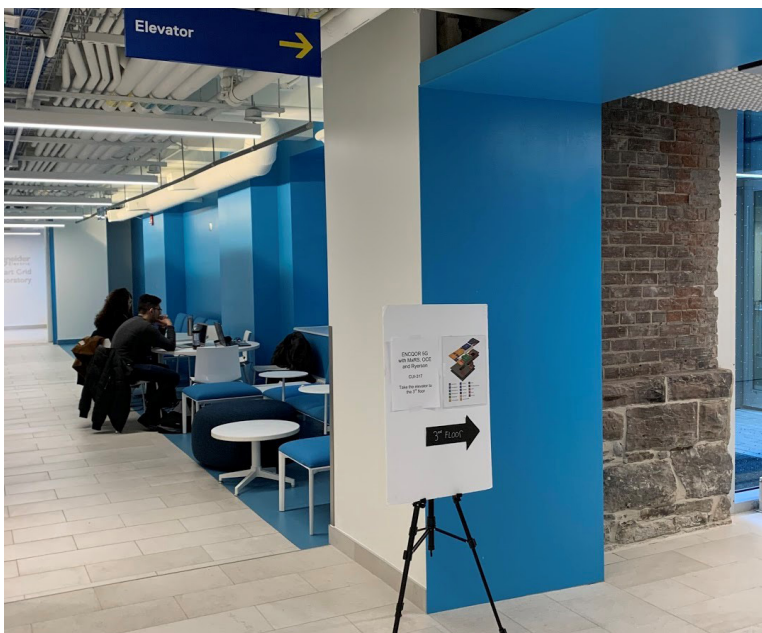


The Front Lobby, there will be Access guides here to assist audience members.

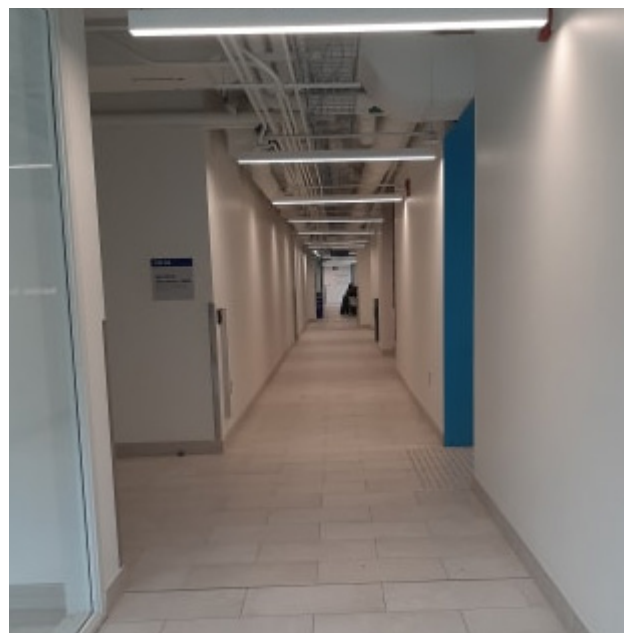
Route to Event Room (Room CUI317)

Hallway:

To get to the event room, turn left in the hall until you see the “Elevator” sign. At this sign, turn to the right for access to the elevator and stairs. There will be ushers at the entrance to assist anyone who needs it.



The hallway leading out of the lobby to the elevator.



Part-way down the hall you will come to this intersection. To the right is the elevator.

Elevator:

This elevator is located at the end of the hall after you turn right. It will take you to the 3rd floor. The interior of the elevator is quite spacious.



Door to stairs and the elevator.



Interior of the elevator.



Hallway to the elevator and stairs, door to the stairs on the left after the windows.

Stairs:

The door to the stairwell is located beside the elevator on the left. There are 45 steps to the 3rd floor. The door to the 3rd floor will be directly in front of you once you've reached the 3rd level. There will be signage posted to direct you.



Door to stairwell located beside elevator on main floor.

Interior of stairwell.

Stairwell door that leads to the 3rd floor.

Event Room (CUI 317):

The event room will be directly in front of you as you exit the elevator. If you came up by the stairs, you will turn right and then see the event room down the hall. There will be chairs and relaxed lighting to make sure the space is as comfortable as possible.



Hallway to CUI317.



The main space of the show, CUI317.

Washrooms:

There are four gender-neutral washrooms available. Two on the main floor and two on the 3rd floor. Each floor has one accessible washroom.



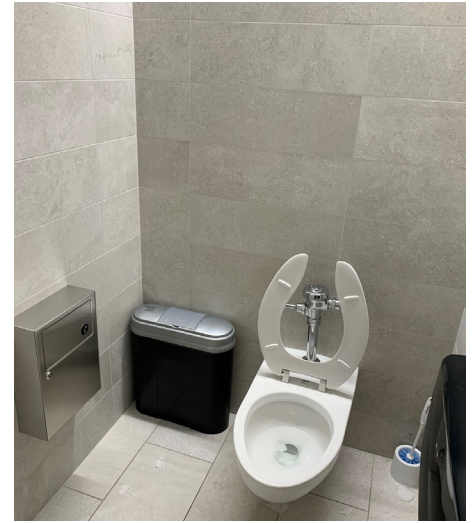
Short hallway to washrooms. These halls are identical on all floors.

3rd Floor Restrooms:

The restrooms on the third floor are located beside the event room. There are two restrooms available. There are also signs high on the wall, above the restroom doors for guidance.



Signs for the washrooms are visible up on the walls in the main hallways.



Another image of the smaller washrooms.

Main Floor Washrooms:

The washrooms on the mainfloor are located near the main doors, down the hall, and on the opposite side of the elevators. There are also signs on the wall next to where the washrooms are located for guidance. Both are gender neutral with one having a change station. The accessible washroom on the main floor is the only one with a change station and shower.



Image of the smaller washrooms at the Centre.



Front of gender neutral washrooms.



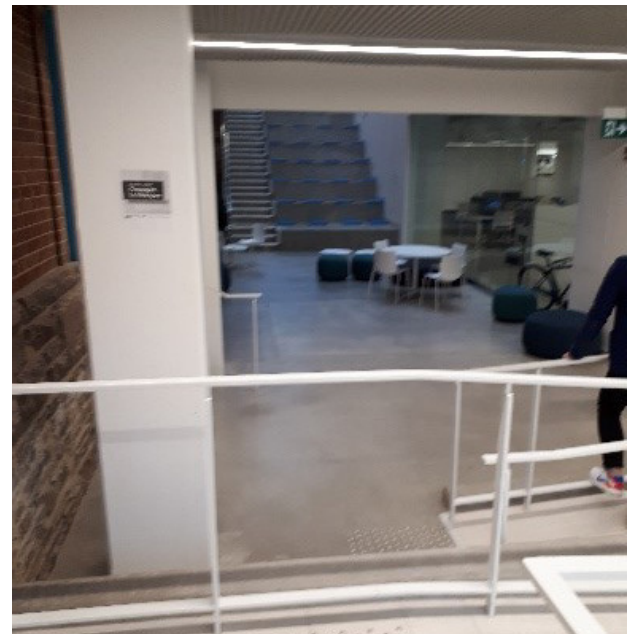
Washroom with change station.

Chill Zone

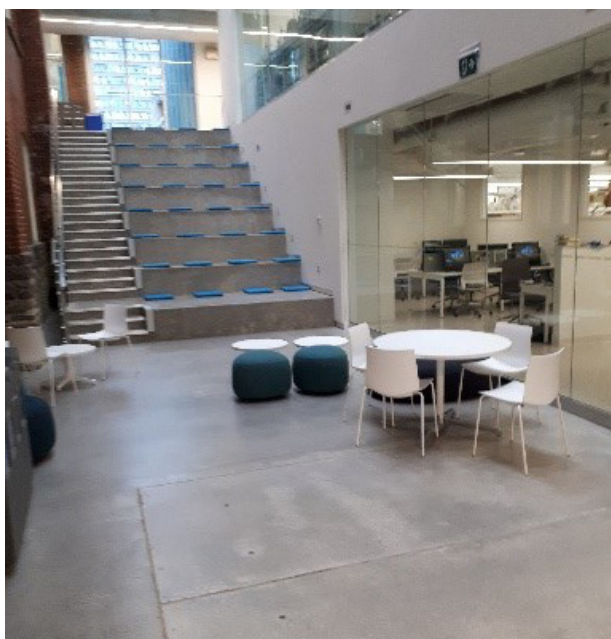
The Chill Zone is located near the front entrance where you first arrive. If you move straight from the lobby door, you will come to a winding ramp and a set of stairs. The Chill Zone area is a space that anyone can use if they need to leave the show at any time in order to relax.. **Check out page 11** for more information on what will be available at the chill zone!



Ramp and stairs leading down to the chill zone. The doorway on the right leads directly to the front lobby.



View of chill zone space from the top of the ramp.



View of chill zone area from the bottom of the ramp.

The Event

Beauty to be Recognized will begin at 7pm with a reception for audience members to get acquainted with the space and socialize with each other. At 7:30pm, the models will join the audience and the show will begin. After the models have shown their outfits to the audience, models and audience members will engage with each other in dancing, and/or discussion until the event ends at 10pm.

How will Beauty to be Recognized be accessible for me?

Crip time

Crip time can mean starting late or going overtime to make it easier to learn, work or rest. Crip time can also mean starting on time so that ASL interpreters are in the room during a spoken portion of the event. During this event, we will embrace crip time by starting on time and sticking to the schedule. However, people will be able to enter, leave, and/or return to the space at any time they wish.



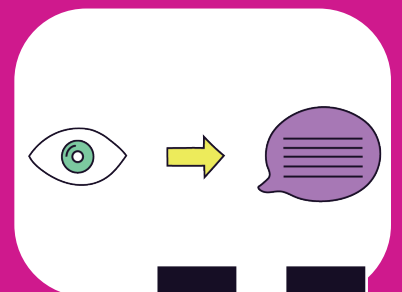
Live Streaming

There will be a livestream of the event available online that people can access on their mobile devices if they are unable to be present at the event or need to step out at any time.



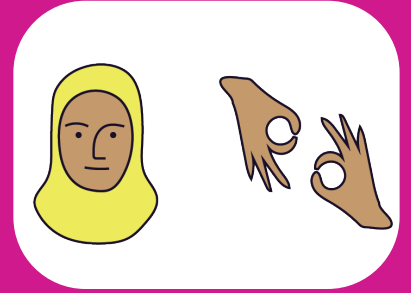
Audio Describer

Headsets will be available for people who are blind or with low vision. The headsets will be available at the front of house (ask any usher) and whoever chooses to use them will be given full access for the entire duration of the event.



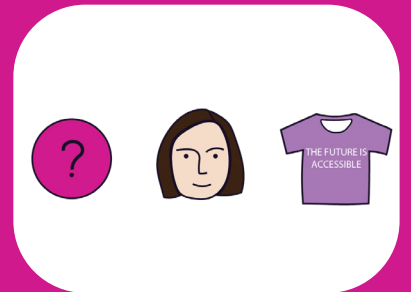
American Sign Language

There will be multiple ASL interpreters at the event. One will be working alongside the Access team ushers, and floating around the space. Two others will be located in CUI317 during the event. They will be wearing ASL badges/stickers for those that need their assistance.



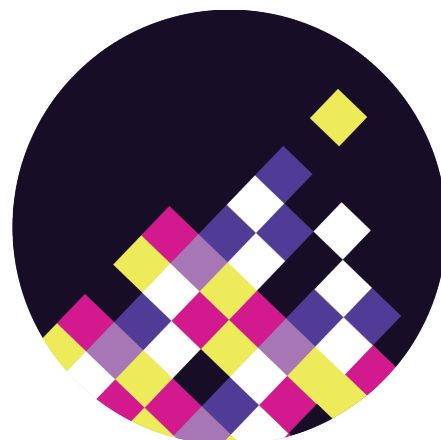
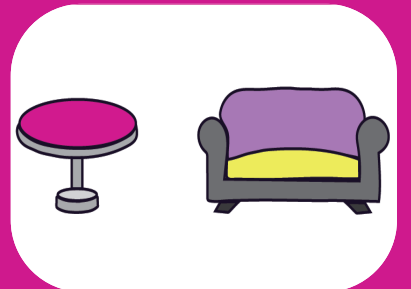
Access Team

The access team will be at the front of house ushering as well as located in the room of the event for any questions or help with accessibility needs. They will be wearing an all black uniform and a lanyard with their names on it.



Chill-out Space and Relaxed room

There will be a chill-out space located on the first floor near the main entrance accessible to everyone. It will have bean soft chairs, noise cancelling headphones (if available), and tablets to watch the livestream of the event for audience members who would like to still view the event.



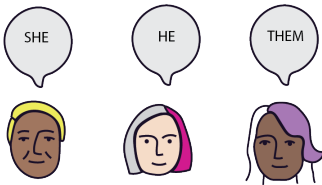
**BEAUTY TO BE
RECOGNIZED**

How can I make this space safer and more inclusive?

We ask that you please help us in making this event as safe and enjoyable for all participants. In that spirit of respect and inclusion, we suggest following these guidelines!



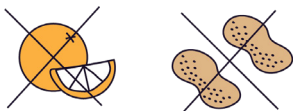
Please set mobile devices on vibrate so that they are not distracting or disrupting the show.



Please respect the pronouns of everyone.



Please help keep the space scent-free as possible by avoiding perfumes, smoke, or other powerful scents.



Please do not bring oranges or nuts into the space due to potential allergies.



If planning to discuss a difficult subject--which may cause a person distress--please inform the people you are speaking with beforehand so that they are not surprised by it.

What are some terms that may be used/discussed?

A

Ableism

Intentional or unintentional prejudice against disabled people. This can refer to individual behaviours or structural barriers.

Activism

The activity of working to achieve political or social change, especially as a member of an organization with particular aims.

Aesthetics

The branch of philosophy that studies the principles of beauty, especially in art.

Audism

Audism refers to discrimination against D/deaf or hard of hearing people.

Autism or ASD

A mental condition in which a person finds it very difficult to communicate or form relationships with others.

AODA

An act to ensure that all Ontarians have fair and equitable access to programs and services and to improve opportunities for persons with disabilities.

B

BIPOC

A short way to say 'Black, Indigenous, and people of color.'

C

Chill-out space

An area or a specific place which is quite for people to relax and take a break from an event.

Cis and cisgender

Cis and cisgender are words that people use to describe their gender identity as matching the sex assigned to them at birth.

Crip

When we crip, we "open up with desire for the ways that disability disrupts" (Kelly Fritsch).

D

D/deaf

"Deaf" with a capital 'D' refers to Deaf identity and culture. "deaf" with a lower-case 'd' refers to the experience of not hearing, or being hard-of-hearing.

Decolonization

The process of a colony or colonies becoming independent. It is also used presently as a term for reparations and support for indigenous peoples. It also means respecting indigenous ways of thinking and committing to the end of systems which give white settlers unjust privileges over BIPOC.

Disability aesthetics

Disability aesthetics refers to the aesthetics of disability arts. Disability aesthetics invites us to think about disability as a desirable and celebrated way of being in the world.

Disability Justice

Disability justice is a form of activism led by and for disabled Black, Indigenous and People of Colour. This form of activism focuses on the experiences of disability and ableism from an intersectional perspective, which takes race, gender, sexuality, and class into account.

E

Elder

An Elder is an older Indigenous person who is recognized as a leader in their community. Elders may have different roles based on which communities/nations they belong to.

I

Intersectionality

The interconnected nature of social categorizations such as race, class, and gender as they apply to a given individual or group, regarded as creating overlapping and interdependent systems of discrimination or disadvantage. Intersectionality was created by Black feminists.

Indigenous

Belonging to a particular place rather than coming to it from somewhere else.

M

Mad

A word used by people who have experienced mental distress and/or use the mental health system.

Marginalize

A term used to describe the treatment of a person, a group of people or ideas as not significant. Marginalized people's rights and ideas are not seen or heard as central or important.

N

Neurodiverse

Refers to the idea that people experience things in many different ways. Our bodies, minds, and nervous systems are varied and include all kinds of different responses to our environments. A person who is neurodiverse may experience different sensations and responses to the world. There are many ways to be neurodiverse. A common example of neurodiversity is autism and autistic ways of thinking.

Non-binary

A term used to describe gender identities that do not fall within the traditional gender categories of male and female.

P

Prejudice

When we have an idea about a person or group of people that is not based on reason or actual lived experience, it is known as prejudice.

Privilege

A term that describes the benefits and advantages that a person receives because their position in society is considered as more important, beneficial, or desirable than others. For example, in regards to size, being thin is a privilege. Unlike fat people, thin people live in the world without encountering discrimination or exclusion based on their size, and with the feeling that public space was built with them in mind.

Pronouns

Are used in community spaces, especially in queer-positive and inclusive spaces, as a means of expressing gender identity with others. For example, a non-binary person might have “they” as their pronoun (rather than “him” or “her”). Using a person’s correct pronouns is one important way to show respect for that person. Gender pronouns include she/her/hers, he/him/his, they/them/theirs, and more.

R

Relaxed Performance

A form of theater performance that has been modified to be accessible for people with sensitivity to lights, sounds, and unexpected events. Relaxed Performances are accessible to people who wish to be active or make sound during a performance, or who want to leave and come back.

S

Sanism

Discrimination against people with lived experience in mental healthcare systems or institutions is known as sanism.

Settler/Settler privilege

A word used by people to acknowledge their relation to their ancestors who colonized Indigenous land. The expression “settler privilege” is used to describe the ways that settlers (non-Indigenous people) today benefit from colonialism.

Spoonie/spoons

The term “spoonie” is coined from a story created by Christine Miserandino. This story describes an individual’s capacity for day-to-day tasks based on how much pain and/or energy that person has. The amount of spoons a person has refers to the capacity they have on any given day, and this is dependent on how they feel. People who

experience pain, fatigue, and/or chronic illness may call themselves a spoonie as a way of telling others that they have to be careful to not use up all their limited energy, or “spoons”.

T

Trans and transgender

Words that people use to describe their gender identity as being different from the traditional gender categories of male and female. For example, the gender identity of a trans person might not match the sex assigned to them at birth.

Treaty

A formal agreement between nations or countries. Historically and currently, First Nations and Inuit leaders recognize treaties as living agreements between nations that ensure the well-being of all people, beings, and the land. In opposition, Colonial leaders have, historically and today, used treaties as agreements that guarantee their continued access to power and control over land, animals, and people.

Turtle Island

The original, pre-colonial name of the land that is now known as North America. In accordance to Indigenous people and non-Indigenous allies who are working towards decolonization, Turtle Island was and still is the name used to address the land.

Two-spirit

A word used by some Indigenous people to describe their gender, sexual, and spiritual identity that is different from colonial understandings of gender and sexuality.

Icons credit

Magnifying glass :

Icons made by Freepik from www.flaticon.com

Question Mark :

Icons made by Roundicons from www.flaticon.com

Meditating :

Icons made by dDara from www.flaticon.com

Sun :

Icons made by Freepik from www.flaticon.com

Leaf :

Icons made by GoodWare from www.flaticon.com

Hands :

Icons made by Freepik from www.flaticon.com

Livestream :

Icons made by wanicon from www.flaticon.com

Clock :

Icons made by smashicon from www.flaticon.com

Notes

A blank sheet of white paper with horizontal ruling lines, set against a purple background. The paper has rounded corners and contains 20 horizontal lines. The lines are evenly spaced and extend across the width of the paper. The paper is centered on the purple background.

A blank sheet of white paper with rounded corners, featuring horizontal ruling lines. The paper is centered on a solid purple background. There are 20 horizontal lines in total, evenly spaced across the page. The lines are thin and black, providing a guide for handwriting or typing.

A blank sheet of white paper with rounded corners, featuring horizontal ruling lines. The paper is centered on a solid purple background. There are 20 horizontal lines in total, evenly spaced across the page. The lines are thin and black, providing a guide for handwriting or typing.



BEAUTY TO BE RECOGNIZED

Ryerson
University

Fashion
Faculty of Communication
& Design

FA
SH
ION
AT FCAD