

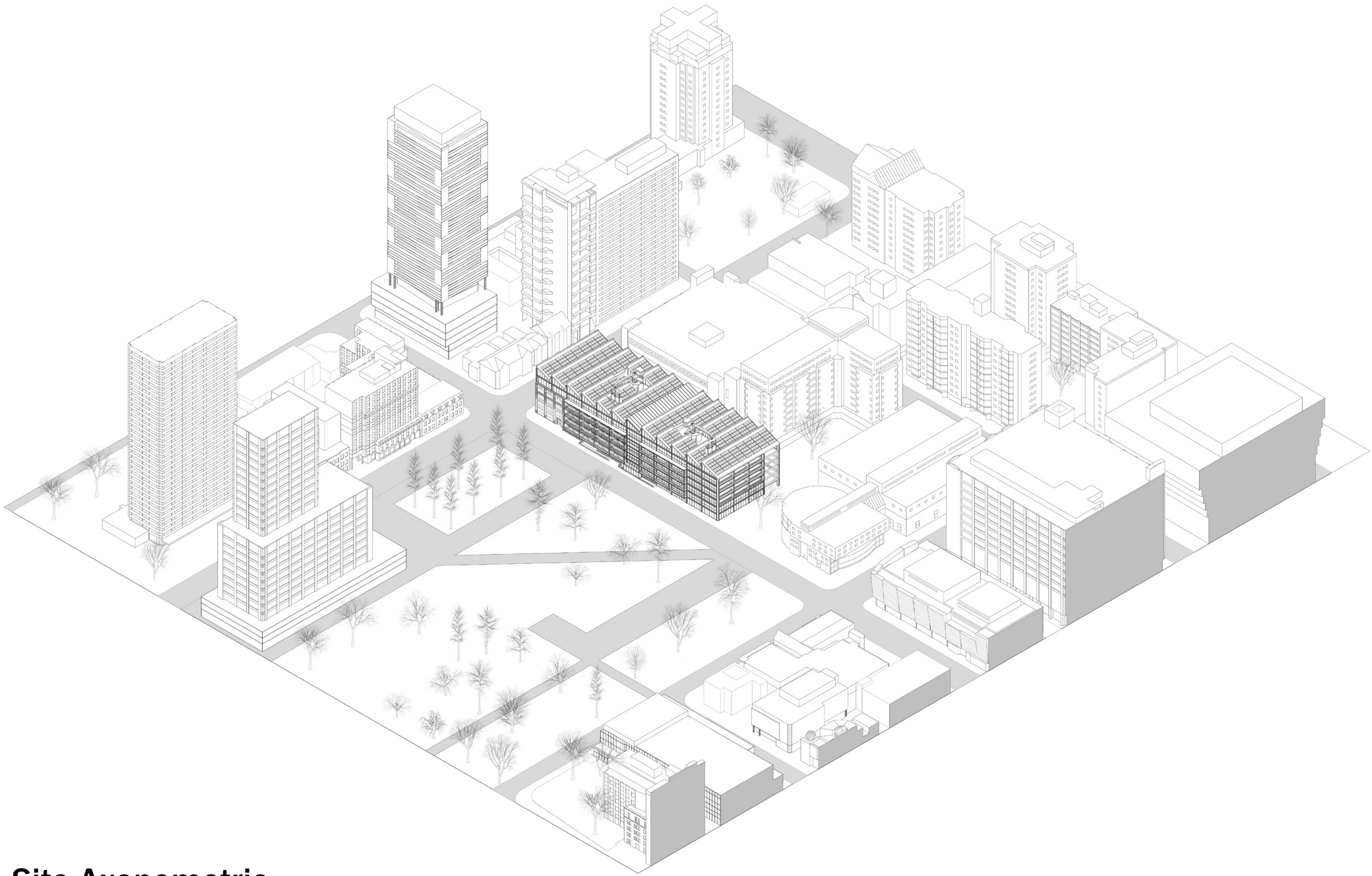
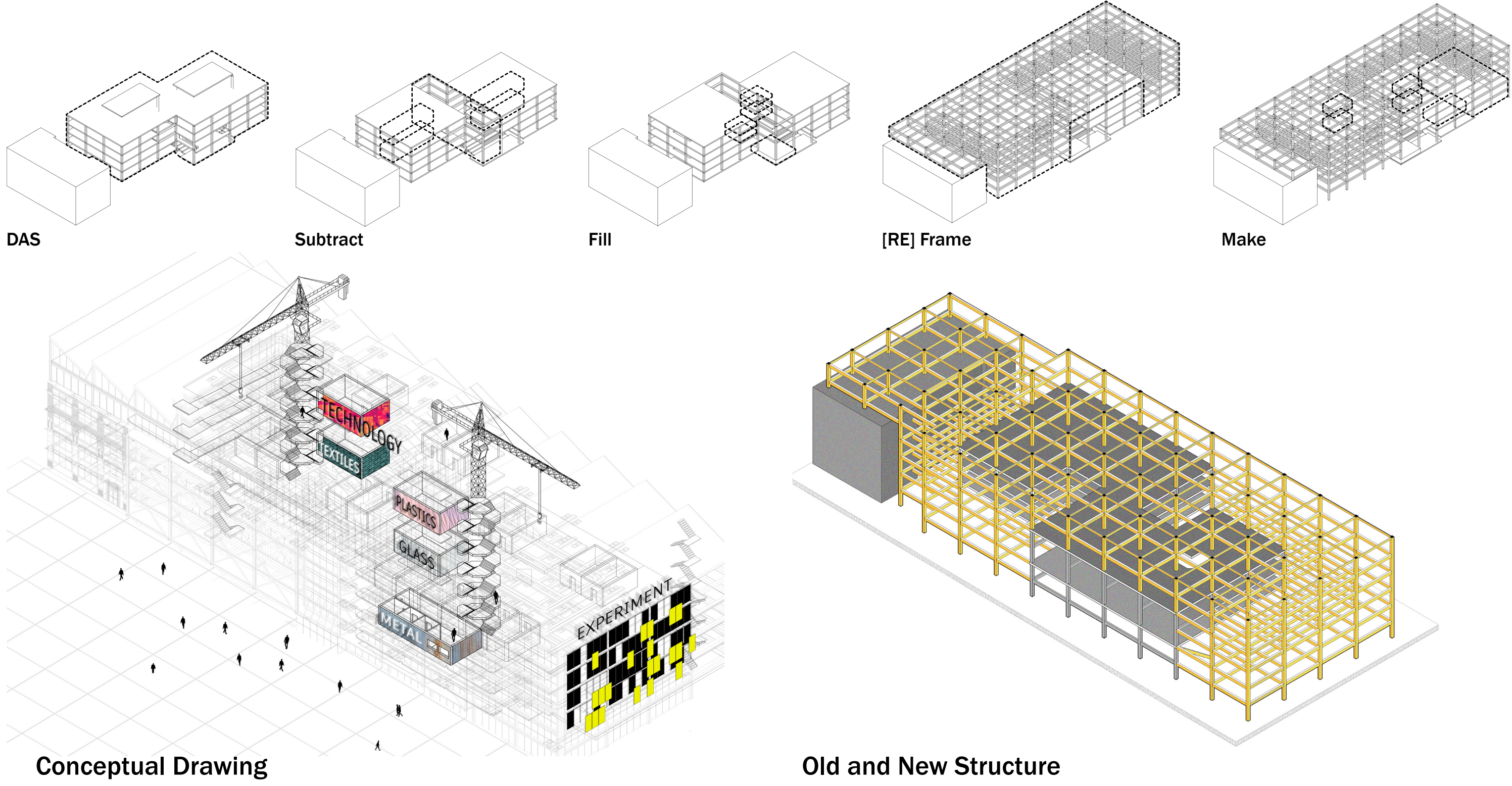


325 Church St, Toronto

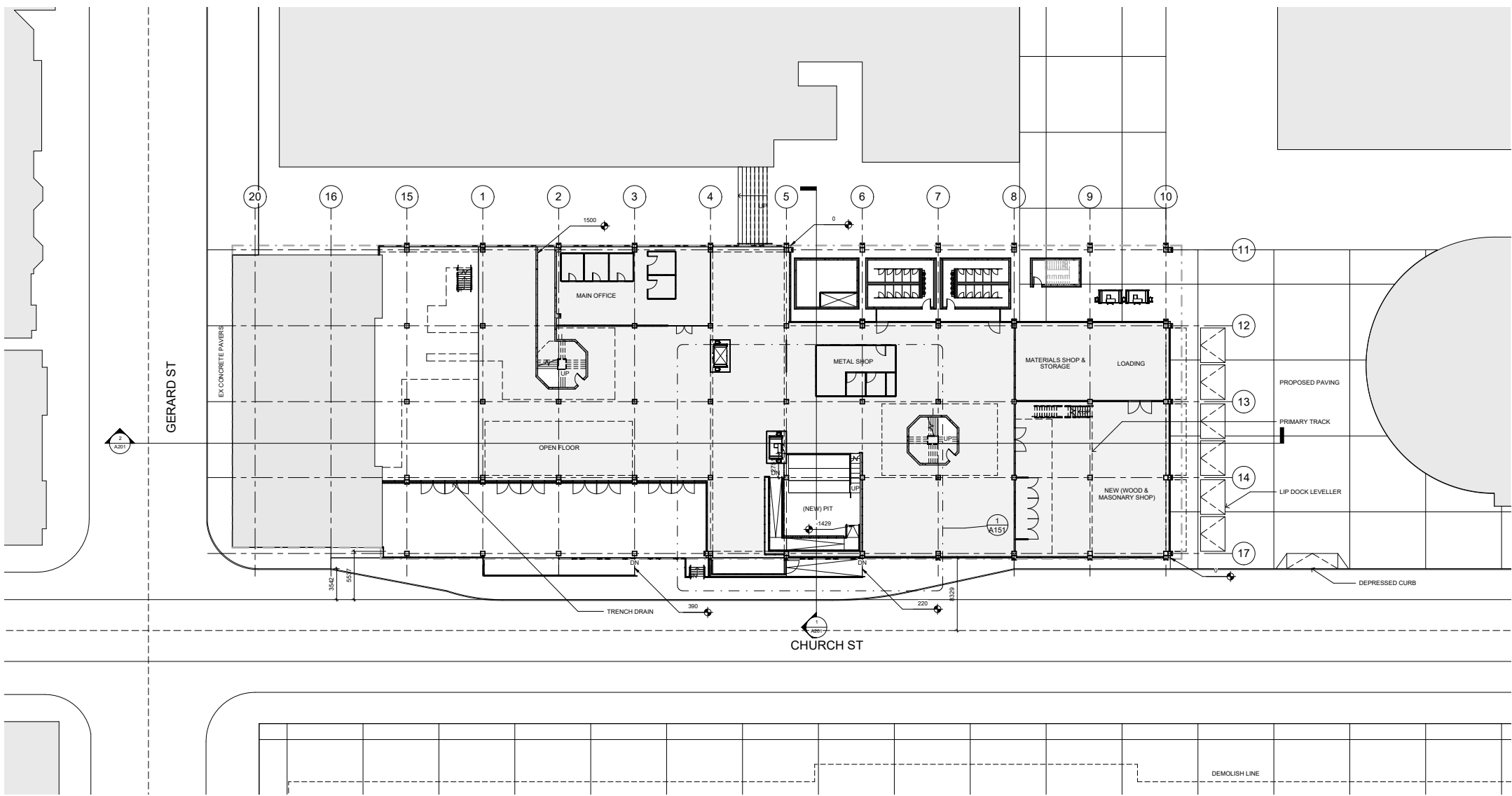
DAS [RE] FRAME

Matteo Vinelli, Kyle Wong

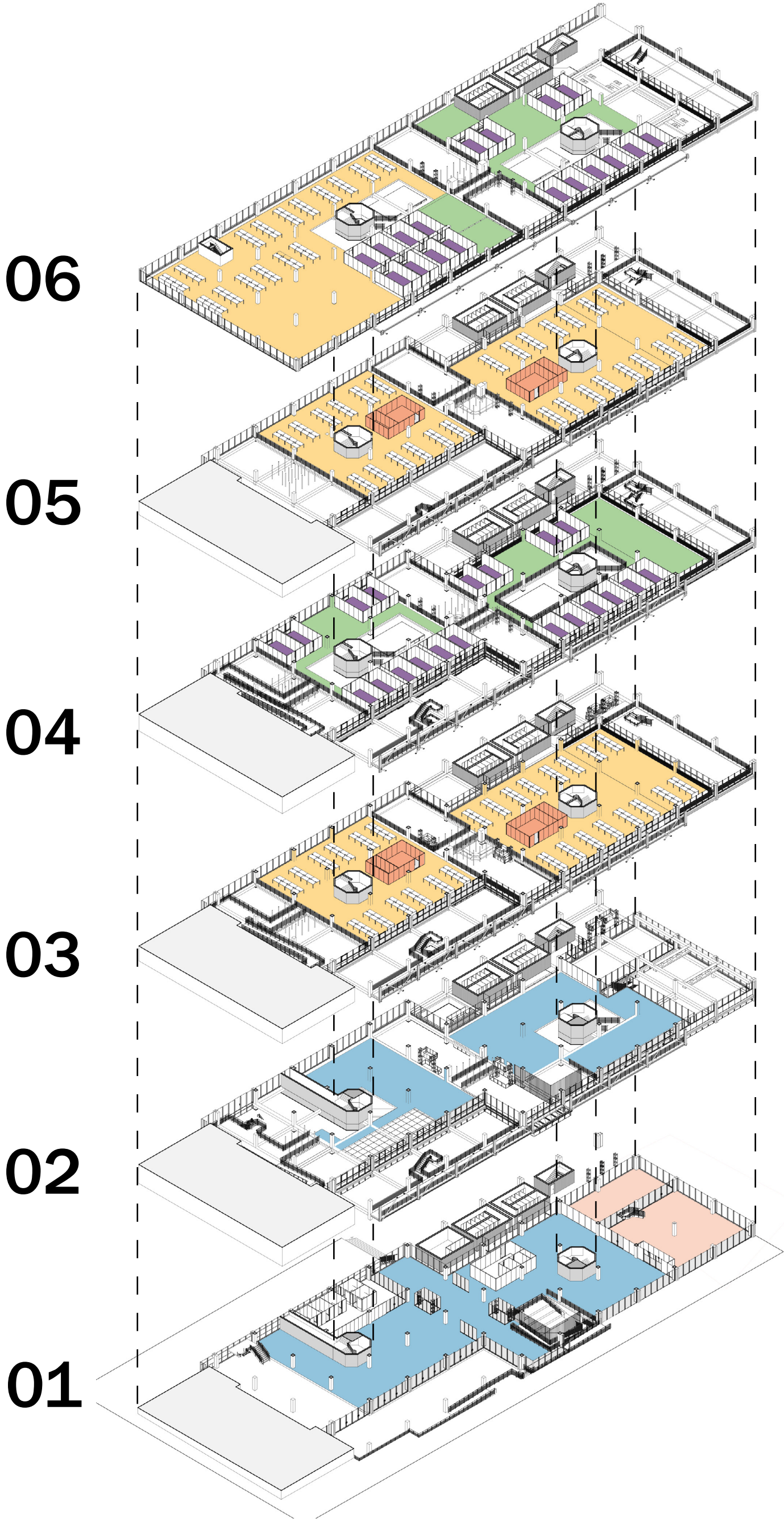
DAS [RE] Frame transforms architectural pedagogy — one that responds dynamically to the evolution of technologies: old, existing and new. Architectural education within DAS has been grounded in tradition, often lacking the spatial and technological capacity to fully support hands-on, design-based learning, particularly in the early years of study. DAS [RE] Frame aims to revive the haptics of engaging with physical materials by introducing dedicated model making workshops. These modular workshops are supported by an adaptable structural framework that allows tools and equipment to be added or replaced as AI integration, digital fabrication, and robotics evolve. This approach keeps the program dynamic, practical, and prepared for the future.



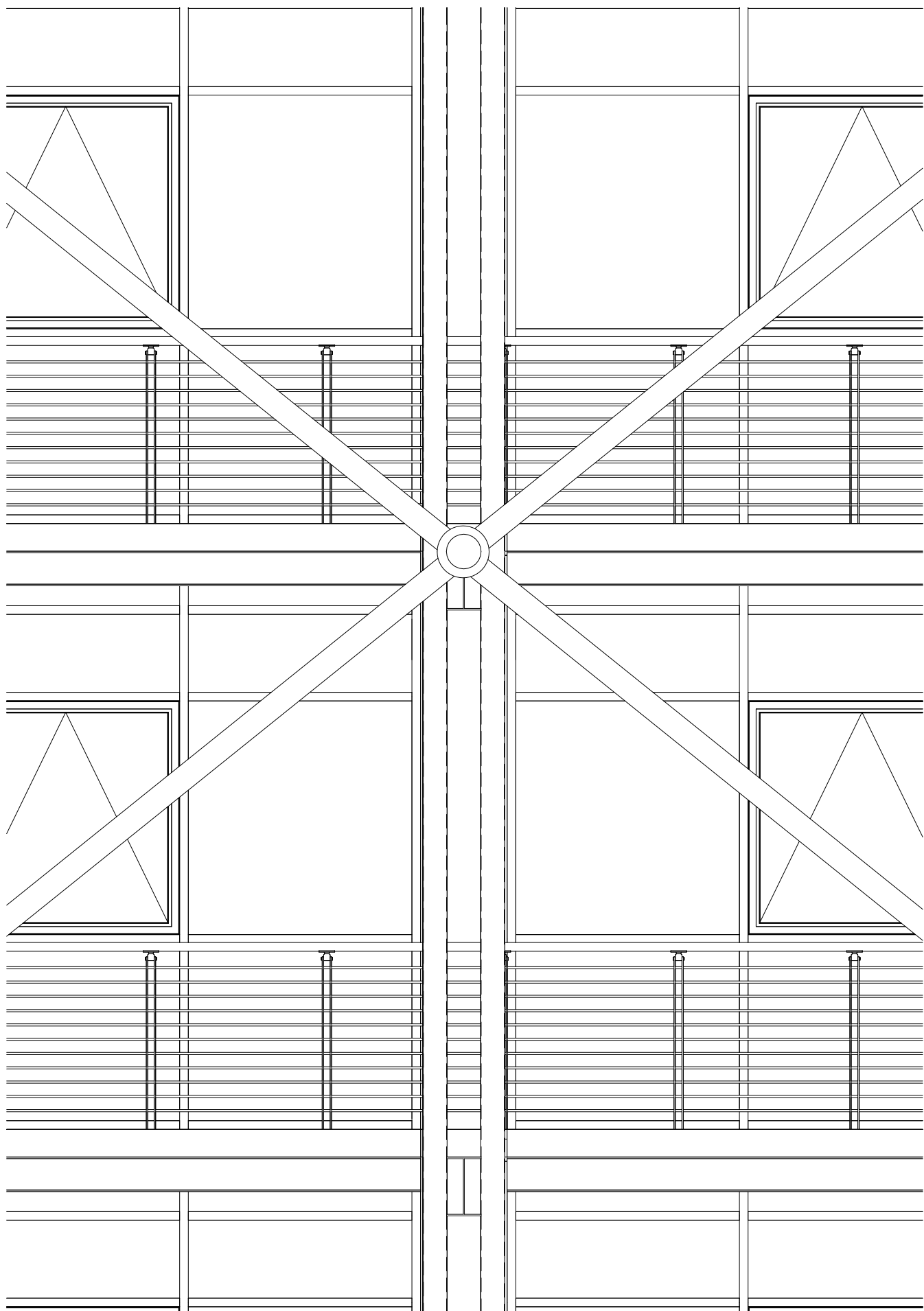
Site Axonometric



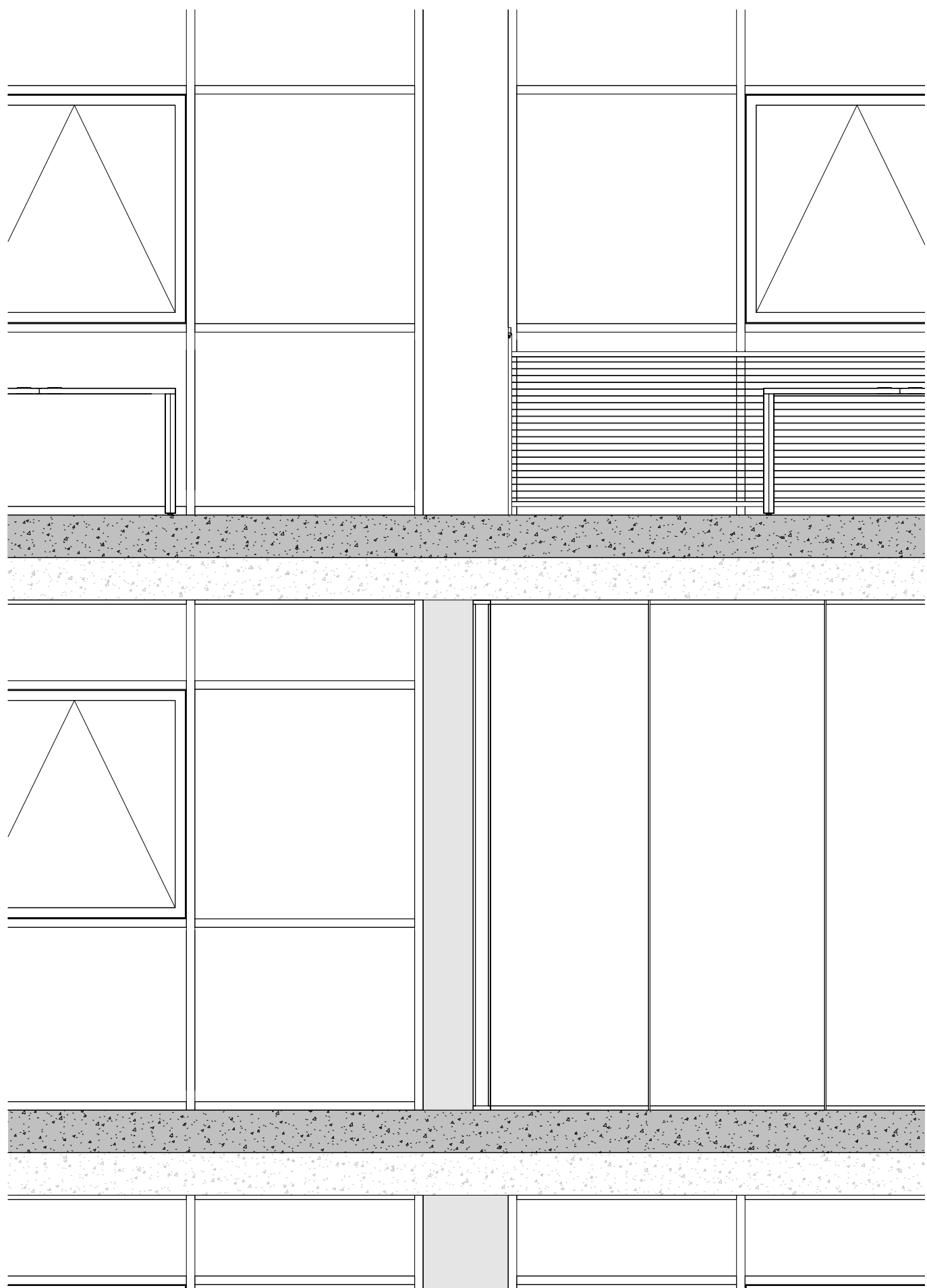
Ground Floor Plan



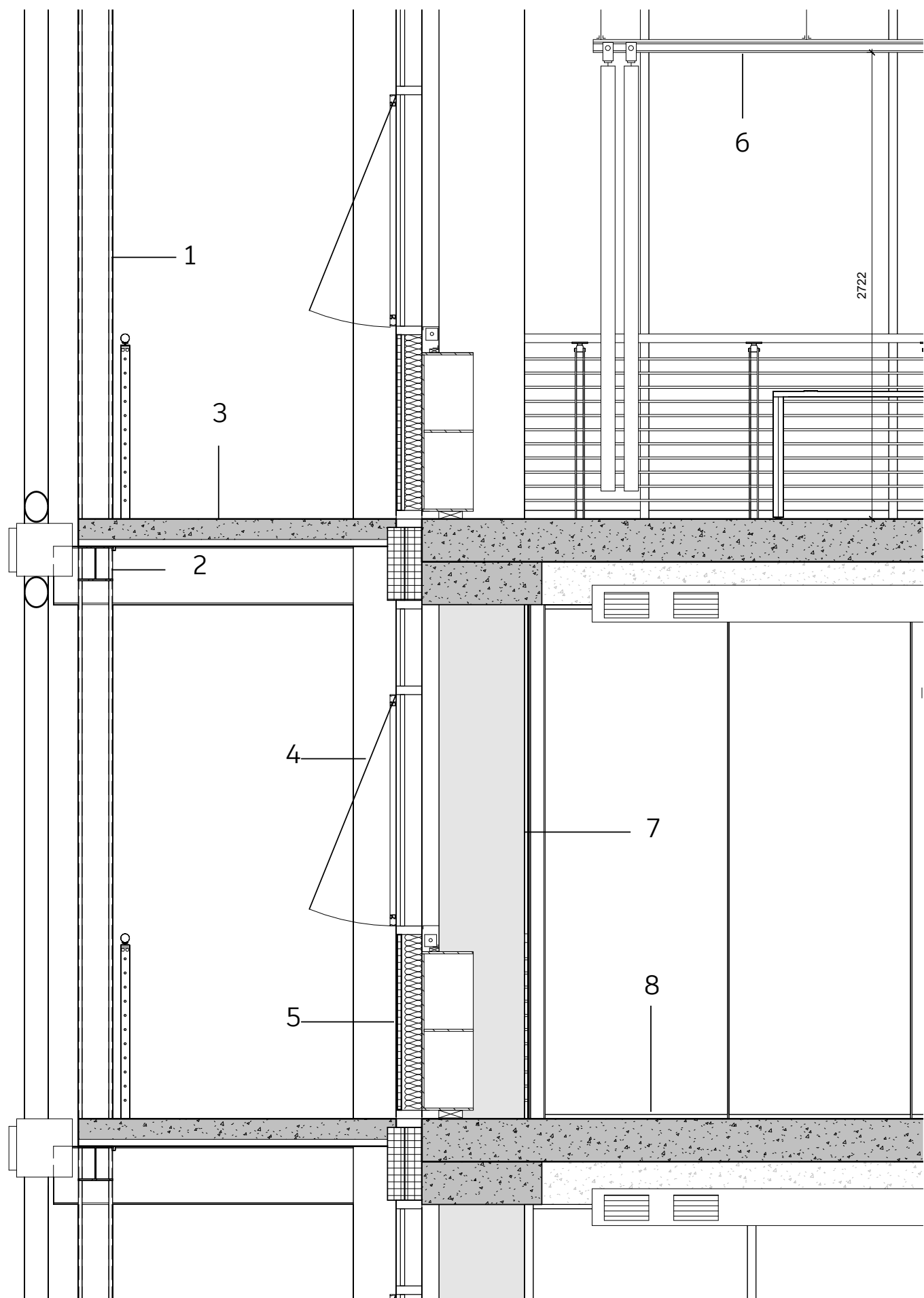
Program



Partial Exterior Elevation 1:20



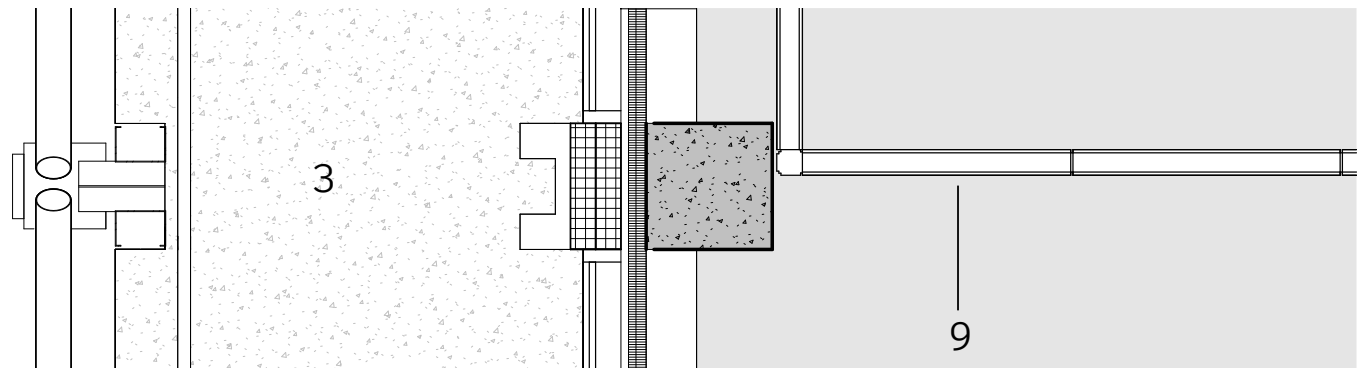
Partial Exterior Elevation 1:20



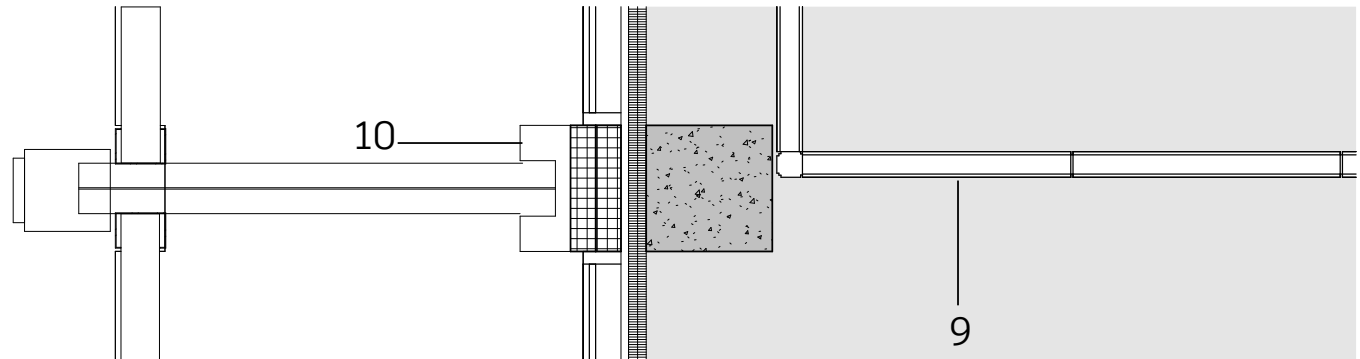
Partial Section 1:20

- 1 2x100MM C CHANNEL
- 2 100MM STEEL BEAM
- 3 EXTERIOR WALKWAY ASSEMBLY
160mm STEEL DECK ASSEMBLY WITH CONCRETE TOPPING
140mm STEEL BEAM
100mm STEEL COLUMN
ALUMINIUM COVER
2x100mm C-CHANNEL
- 4 AWNING WINDOW

- 5 CURTAIN WALL ASSEMBLY
26 GAUGE STAINLESS STEEL INSULATED SPANDREL PANEL
AIR GAP
2x100MM EPS RIGID INSULATION
AIR VAPOUR BARRIER
EXPOSED BACKPAN
- 6 MOUNTED CEILING TRACK
- 7 EXISTING CONCRETE COLUMN
- 8 FLOOR ASSEMBLY
9mm CEMENT SCREED
250mm CONCRETE SLAB (EXISTING)
- 10 CUSTOM STEEL PROFILE

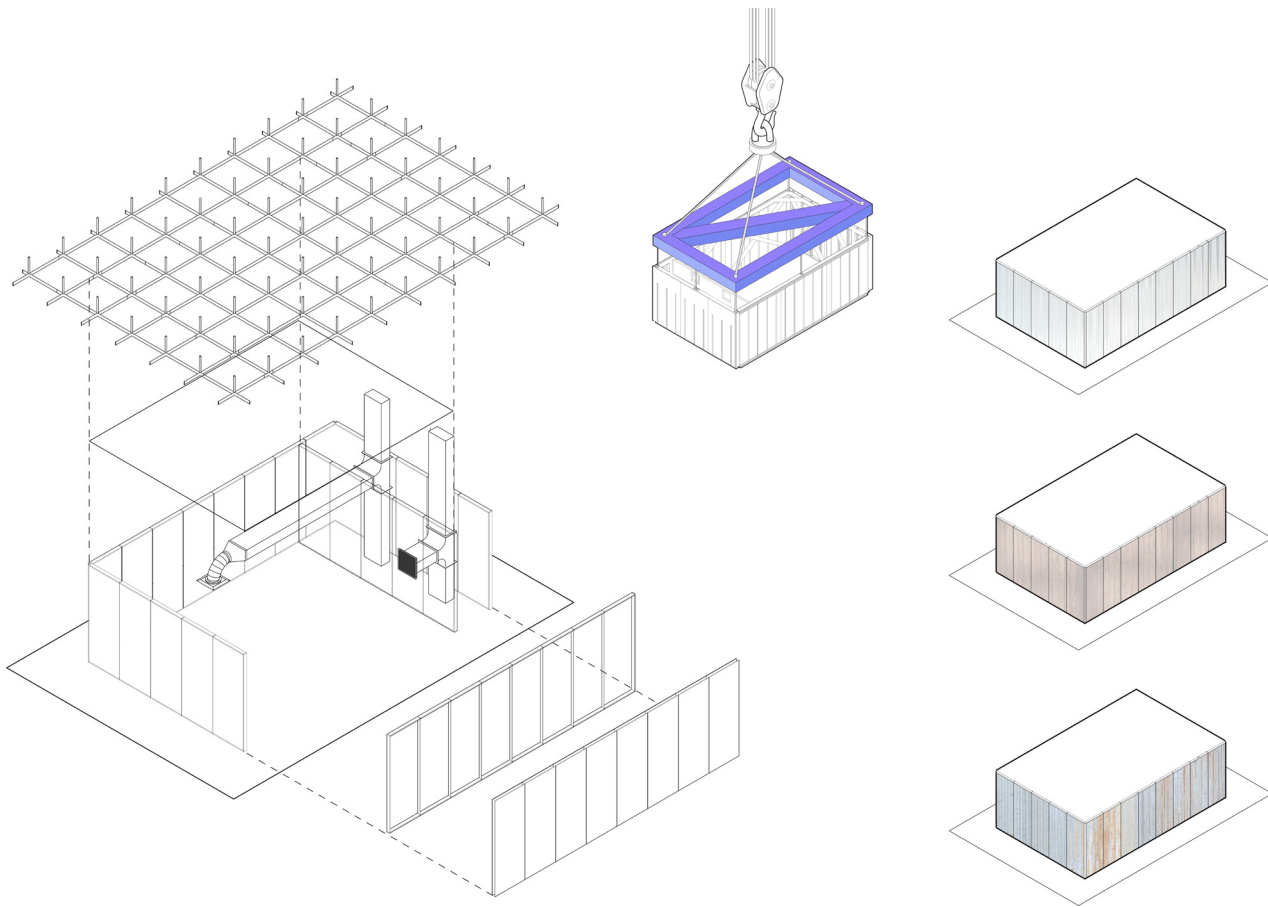


Partial Floor Plan 1:20

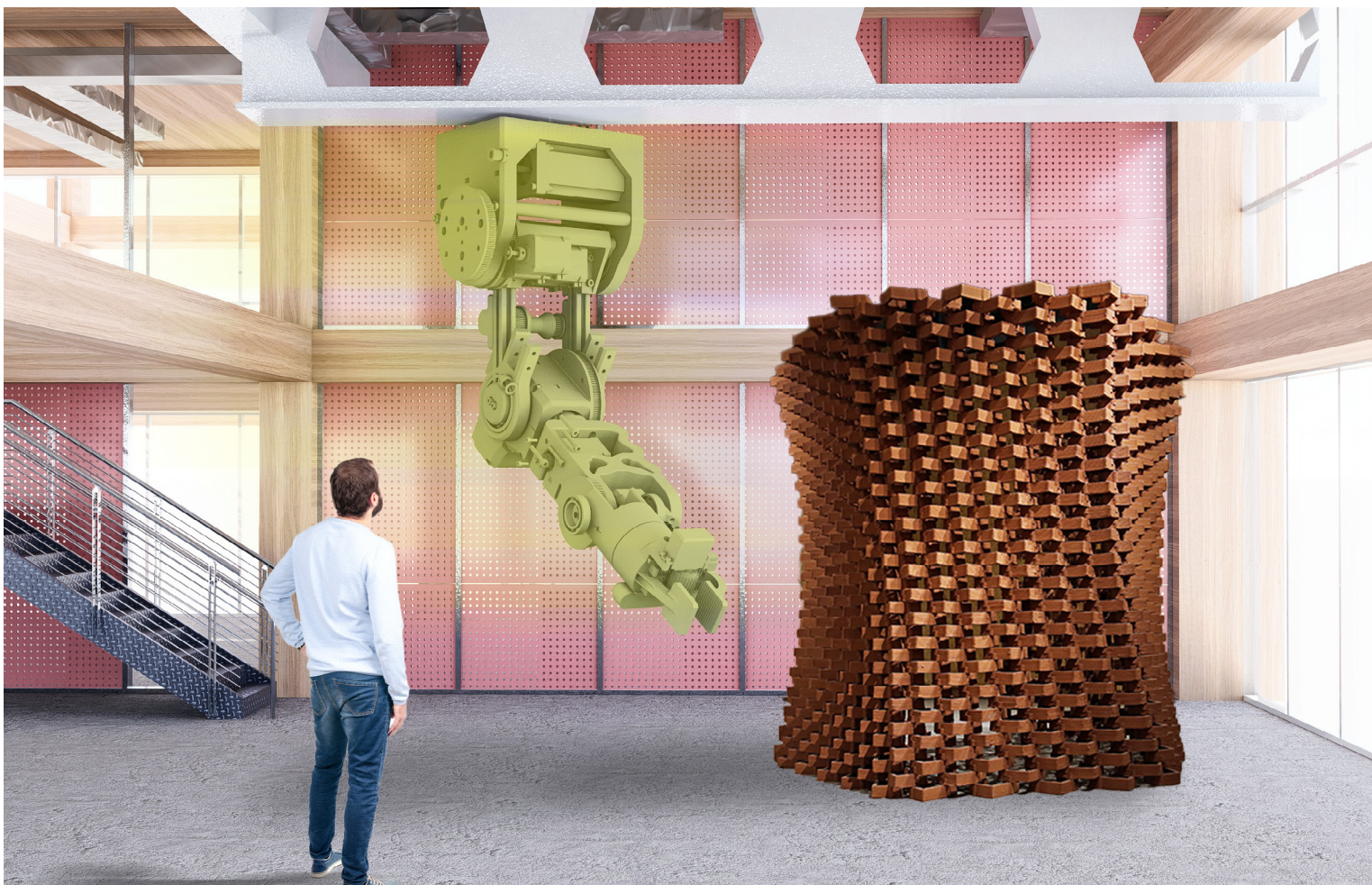


Partial Ceiling Plan 1:20

Fragment Study



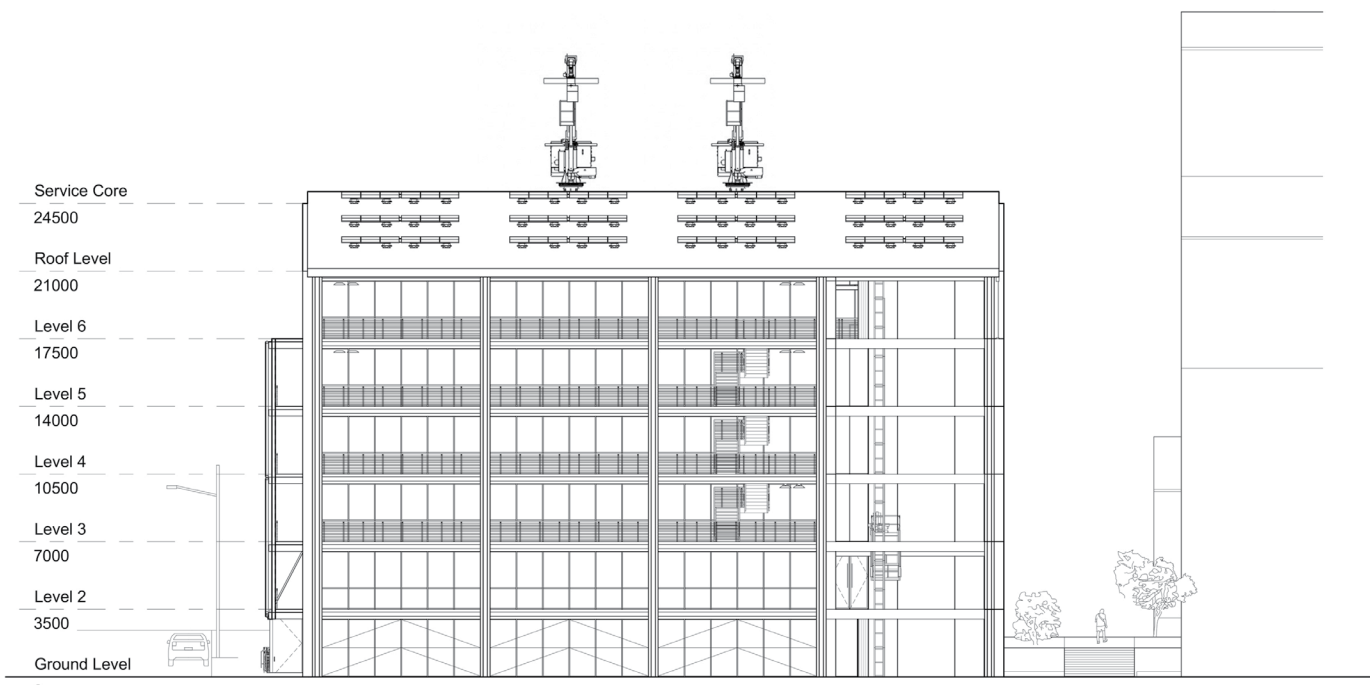
Workshop Modules



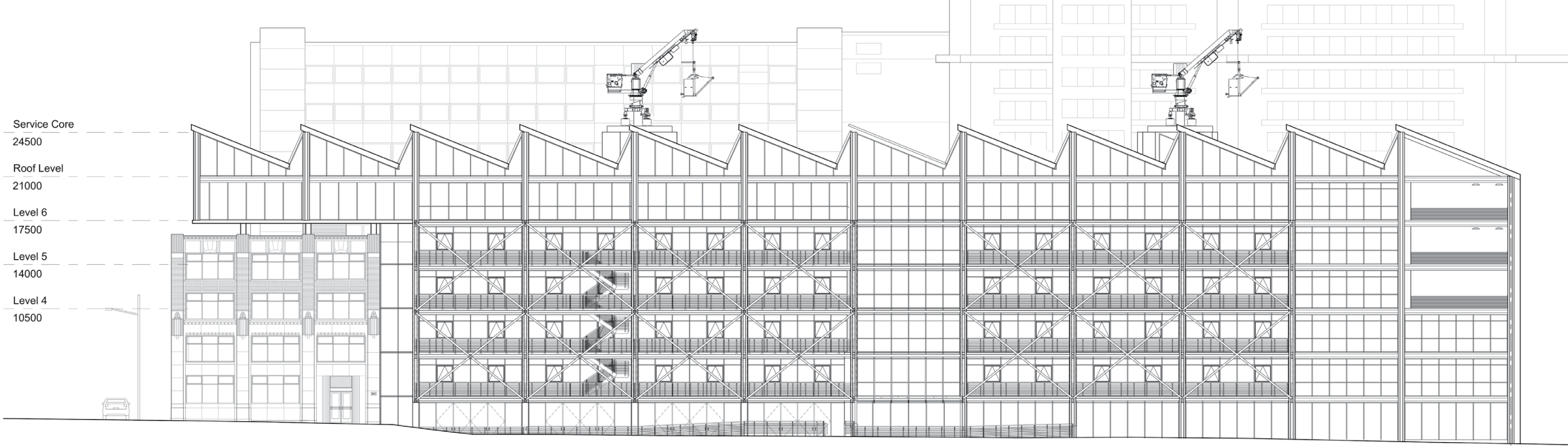
[New] Masonary Shop



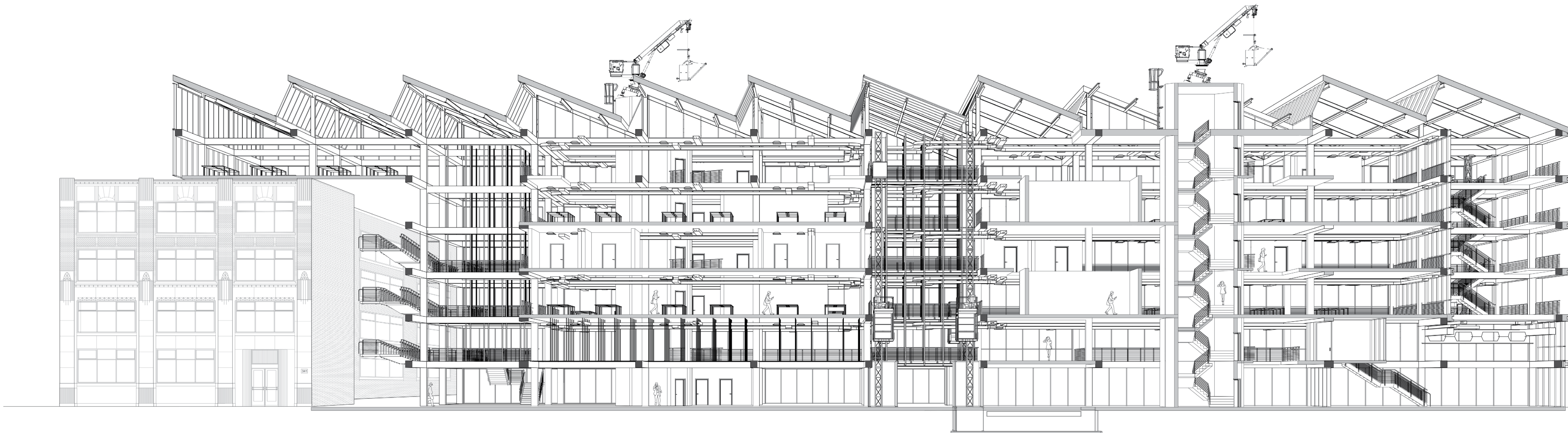
Third Year Studio



South Elevation



East Elevation



Perspective Section