

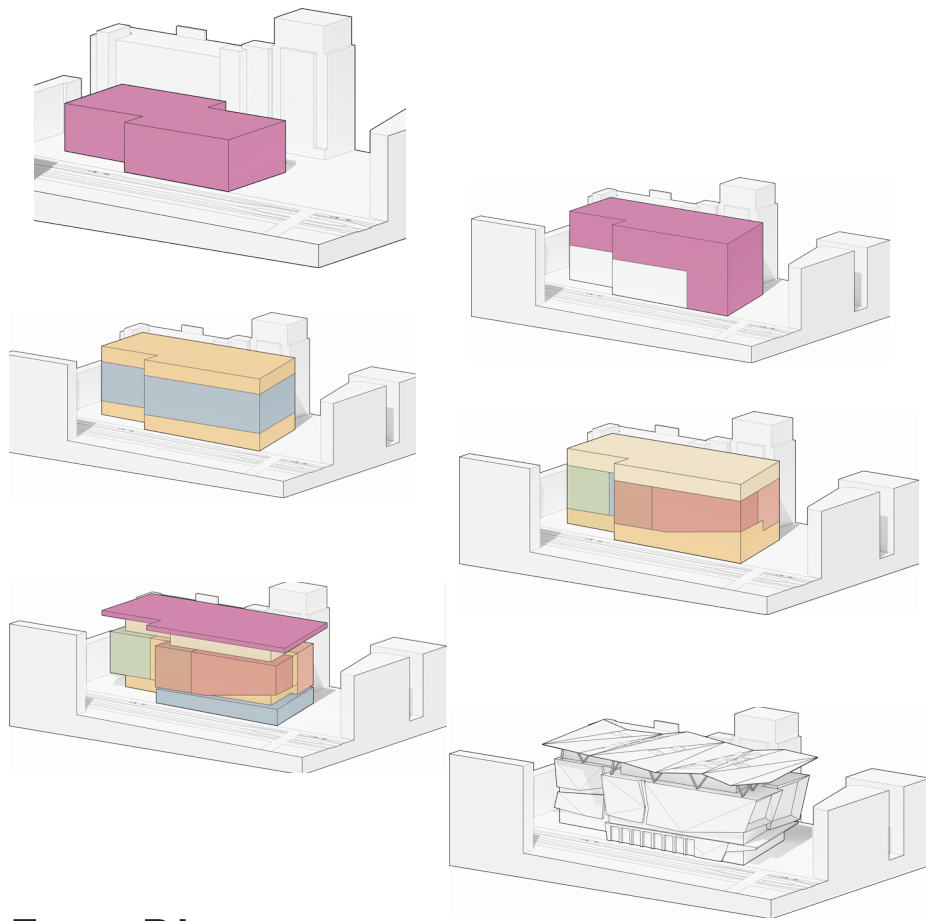


Exterior Render - Daytime

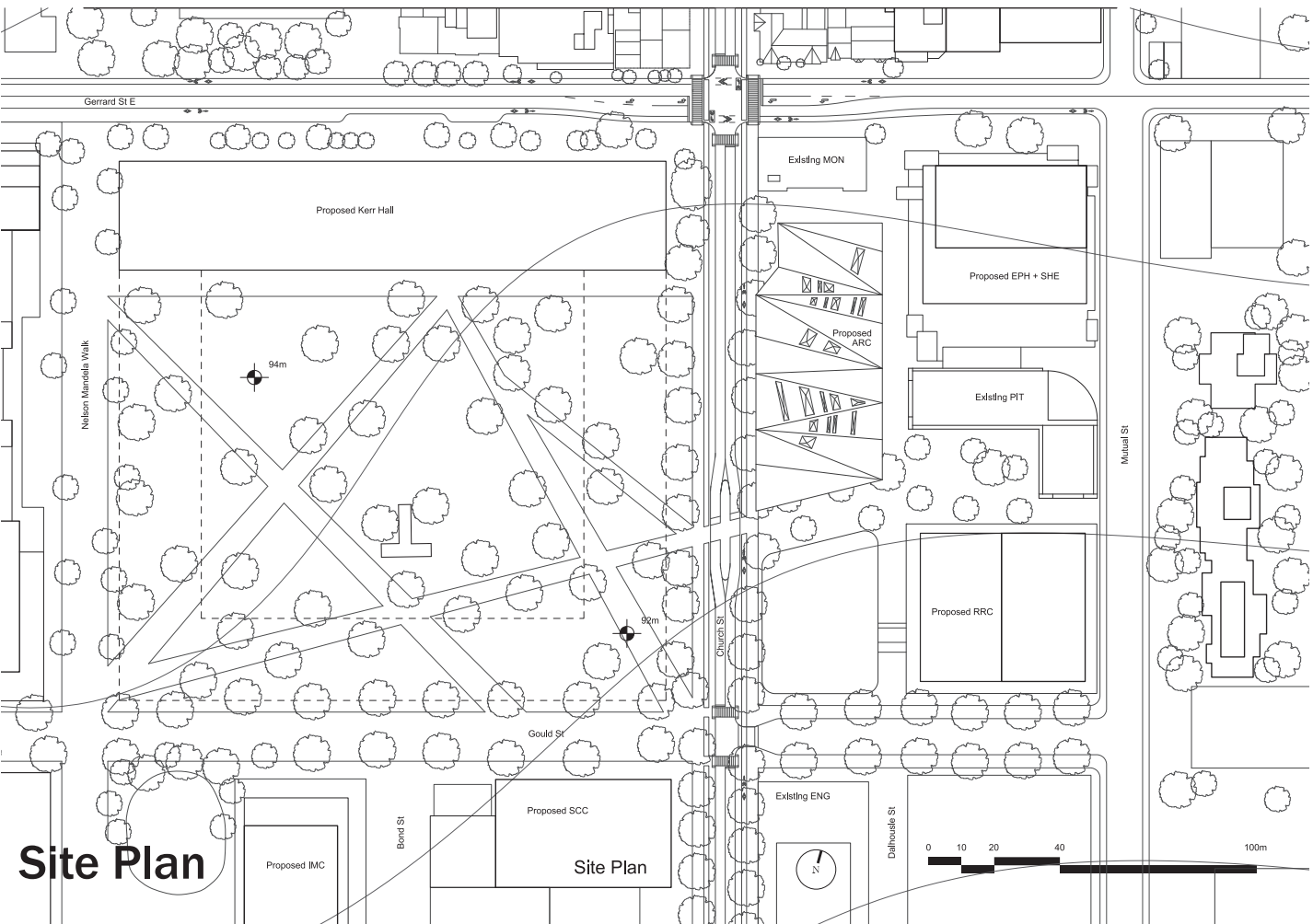
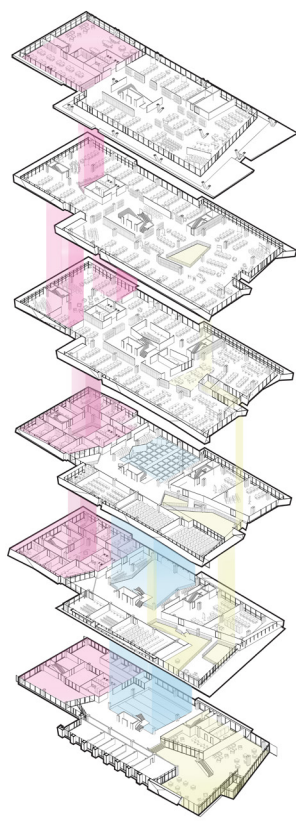
# CONVERGENCE

Evelyn Foster, Marko Jovanovic

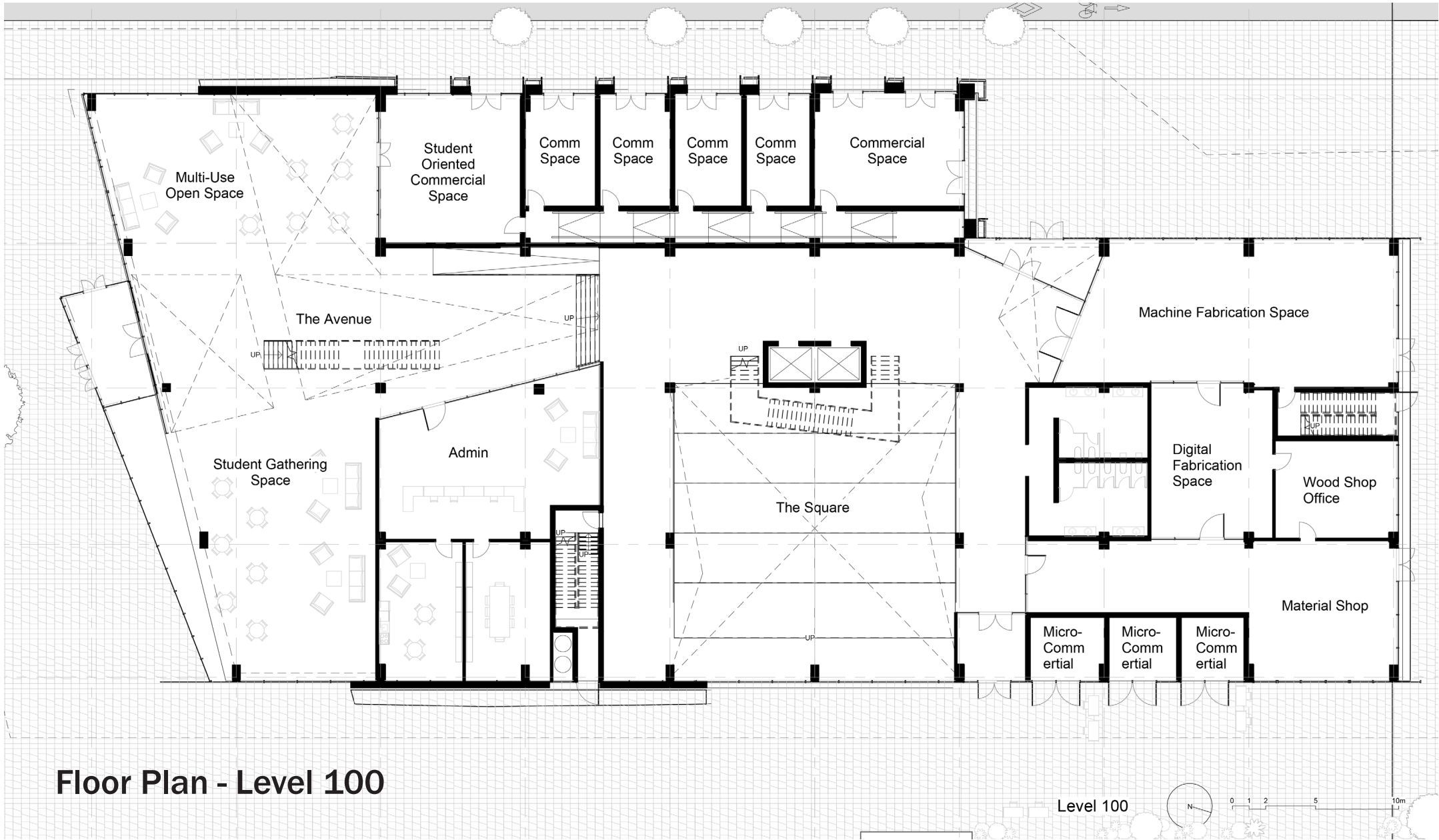
The TMU campus is currently a space to pass through, not to inhabit. Convergence aims to reimagine this by proposing more than just a new Architecture Building, it is a vision for a lively public realm. At its core is the transformation of Kerr Hall into a vibrant central square, with the new building framing a key path from Dundas Square. Human-scaled programming and public space activate Church Street, drawing visitors into a generous social area at the south entrance. This space leads to "The Square," a multi-purpose atrium for lectures, presentations, and casual interaction, anchoring the building's layout. Circulating through the building concludes with the sixth-floor space, a celebratory space under a CLT roof, flooding with natural light. At this point the visitors have reached the pinnacle of the new Architecture building, and are invited to look out over the campus and city beyond.



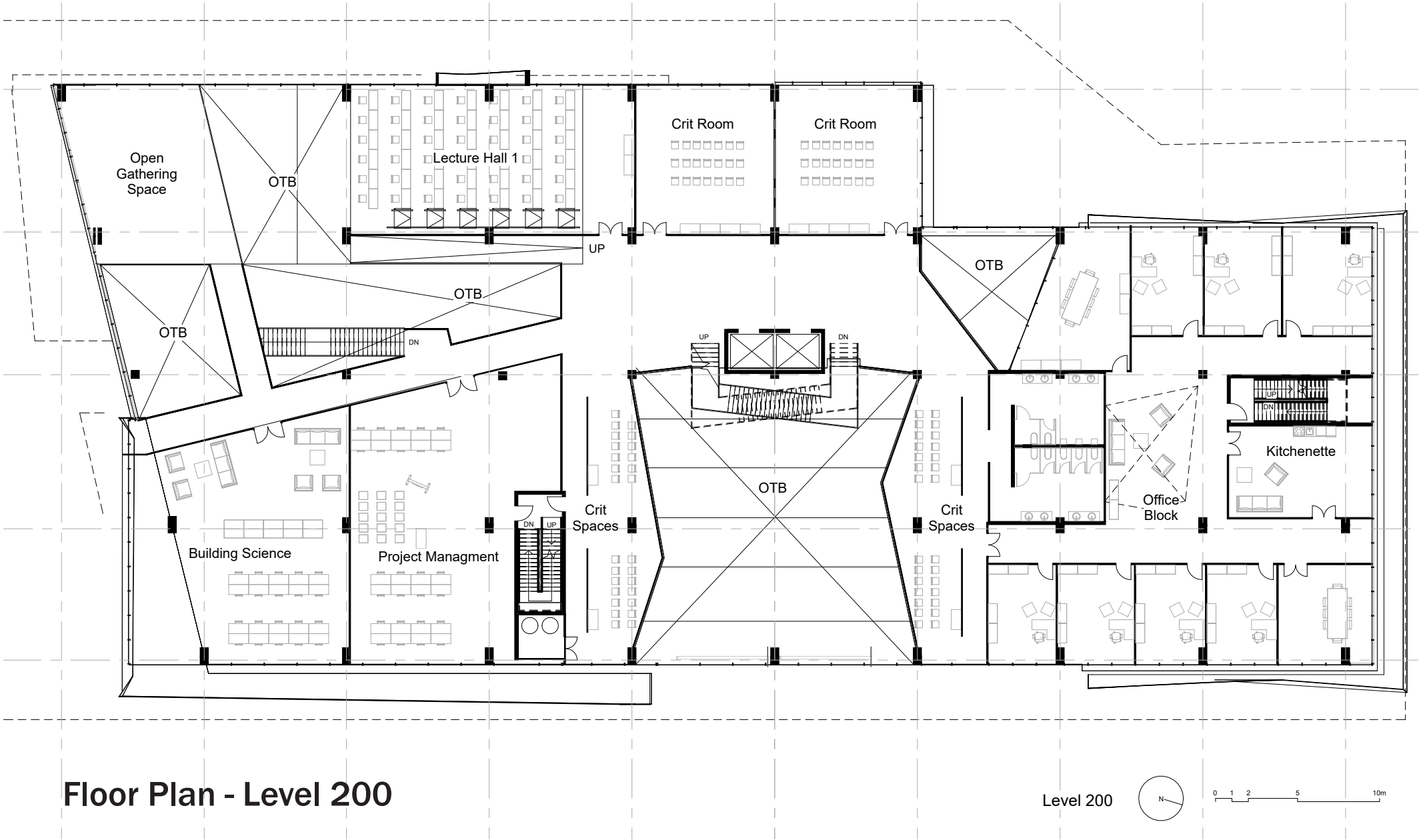
Form Diagram



Site Plan



Floor Plan - Level 100



Floor Plan - Level 200



Interior Perspective - Interconnective Space



Interior Perspective - Fourth Floor Studio