

THE RYERSON CENTRE FOR IMMIGRATION AND SETTLEMENT (RCIS) PRESENTS:

GLOBAL GOVERNANCE OF MIGRATION: IS IT POSSIBLE?

DR. ANNA
TRIANDAFYLLIDOU



DR. GEORGETA
POURCHOT



DR. USHA
GEORGE



Ryerson
University

The **Ryerson Centre for Immigration and Settlement (RCIS)** is a university-wide research centre where international experts collaborate to support the transdisciplinary exploration of international migration, integration, diaspora, and refugee studies. RCIS hosts monthly events with a diverse range of speakers coming from different backgrounds and disciplines. Visit www.ryerson.ca/rcis to learn more.

Speaker

Dr. Anna Triandafyllidou

*Professor and Canada Excellence Research Chair (CERC) in
Migration and Integration, Ryerson University*



The Global Governance of Migration and Asylum: Arguing for a Mess Management Approach

Anna Triandafyllidou

3 October 2019

Ryerson
University



The reality on the ground

Shortened distances

International
migrants:

173 mln 2000

=> 258 mln in 2017



Refugees: Seeking protection in their neighbourhood but also 'coming closer' compared to the past

Drivers of international migration



New origins and destinations within and across regions

Mixed motivations pervasive

Growing inequalities and growing interdependence – growing sense of *relative deprivation* – communication technology, international stereotypes/models, the power of hope

Governing the flows

Highly Skilled Migrants

Welcome

Labour Market Driven

Annual Planning and

Tight Regulation

A wider set of **rights** for regular migrants but watertight categories of migration while reality is fuzzy and complex

Containment / deterrence of irregular migration



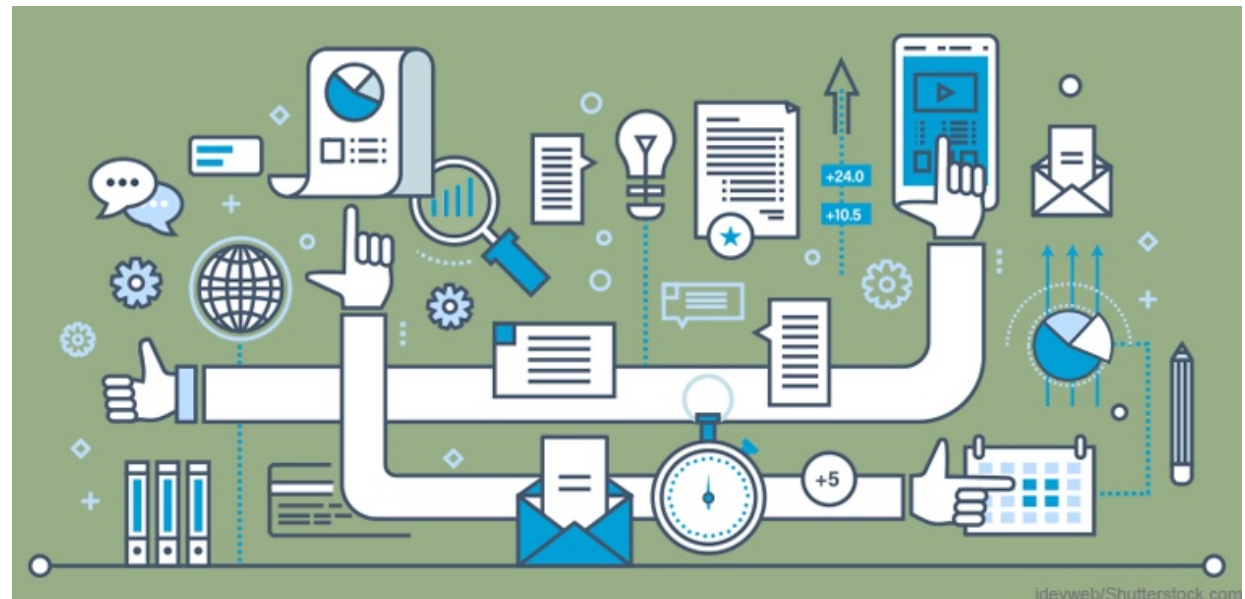
Evidence based or assumption led policy making?

Policy making is inherently **political** - Migration is a contentious issue

Stated and hidden objectives

Vested Interestss in Policy Making

What counts as evidence?



Is a 'crisis' convenient for policy making?



A Risk Management Approach



Modelling of Situations
Denying or Foreseeing Multiple Outcomes
Calculation of Risk Parameters and Probabilities



Uncertainty and Mess Management

Accepting Ambiguity

Knowledge about possible outcomes and likelihoods is problematic

Not ignorance

but non-knowledge:

From **Risk Society**

To **Liquid Modernity**



Safe and orderly migration possible but not probable?

How to govern the unplanned and unpredictable?
Containment and deterrence?

Accepting Uncertainty

also in political discourse



Beyond crisis ↔ and business as usual:

Policy Makers as Mess Managers

Adopting a multi-level, multi-phase, multi-stakeholder perspective – Avoid breaking points – Accept contingency

Where do we go from here?

Multi-level: Local/regional, national, global

Multi-phase:

‘Crises’ and their dynamics

Are volatile and go through phases

Multi-stakeholder: states, international organisations, civil society, citizen groups, private sector

Act on different fronts: regulation, protection, local solutions, prevention

Admit Uncertainty at the political and public level



Thank you for your attention

Anna.triandafyllidou@Ryerson.ca
www.ryerson.ca/cerc-migration