

Printing from Adobe Applications

Adobe InDesign CC was used for this tutorial.

Step 1

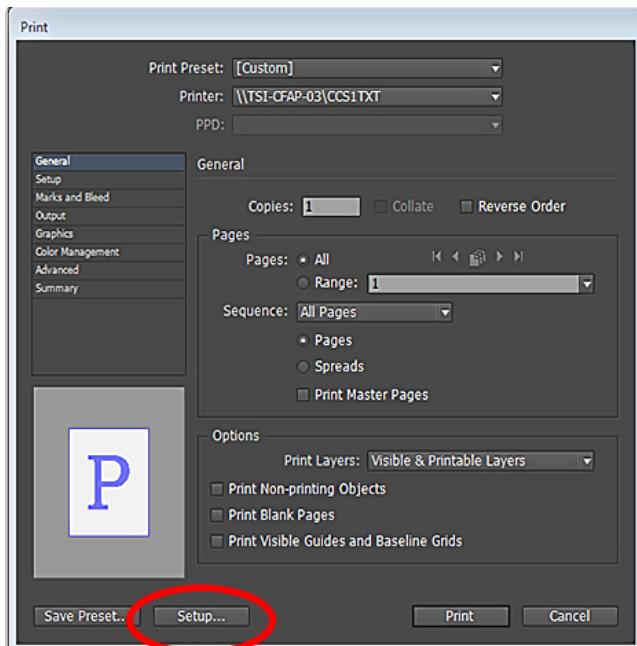
Click **File** from the tab bar at the top of the window and click **Print** once your document is ready for printing.

Step 2

Select the printer you wish to use under the Printer heading. In this tutorial, a self-serve laser printer is selected.

Step 3

To change the default duplex print setting to single-sided printing, click **Setup** located in the bottom left corner of the **Print** window.



Step 4

Once the Print menu appears, select the printer you wish to use from the drop-down menu provided under the **Printer** heading. In this tutorial, a Self-Serve Laser printer is selected.

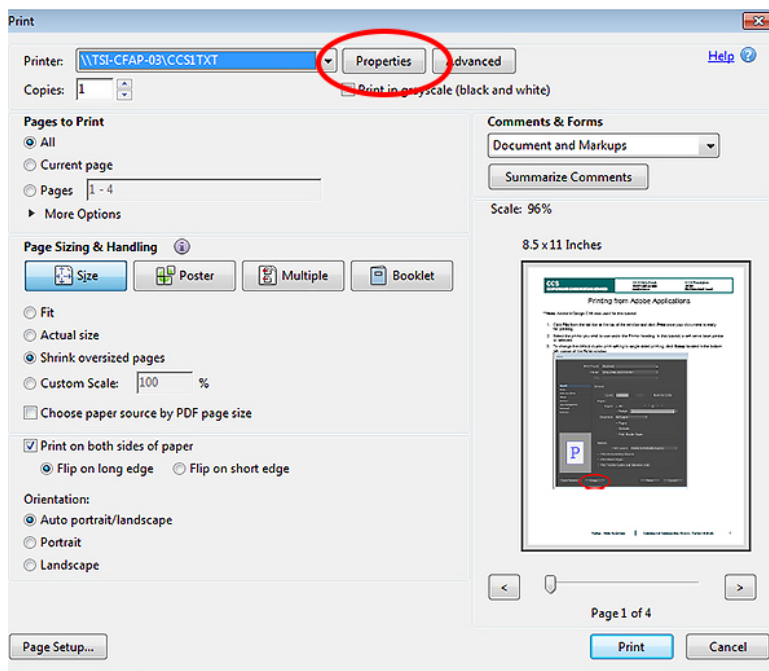


Step 5

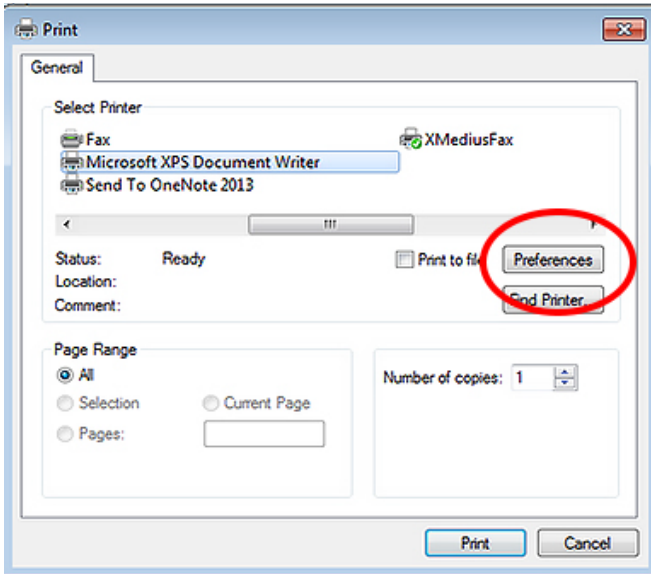
Make sure the correct printer is selected before proceeding. Different Adobe applications use different commands to access the **Printing Preferences** window.

- For [Adobe Acrobat XI Pro](#), Flash, Dreamweaver, and Fireworks click **Properties**.
- For [InDesign](#) and Illustrator click **Preferences**.
- For [Photoshop](#) click **Print Settings**.
- See the images below for an example of each.

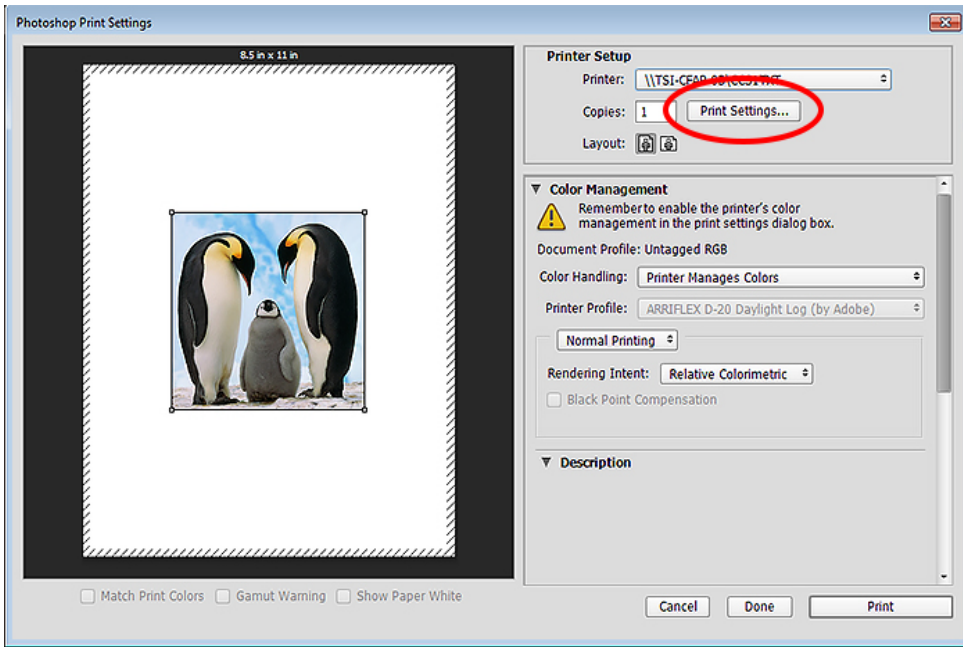
Printing from Adobe Acrobat XI Pro



Printing from Adobe InDesign CC



Printing from Adobe Photoshop CS6

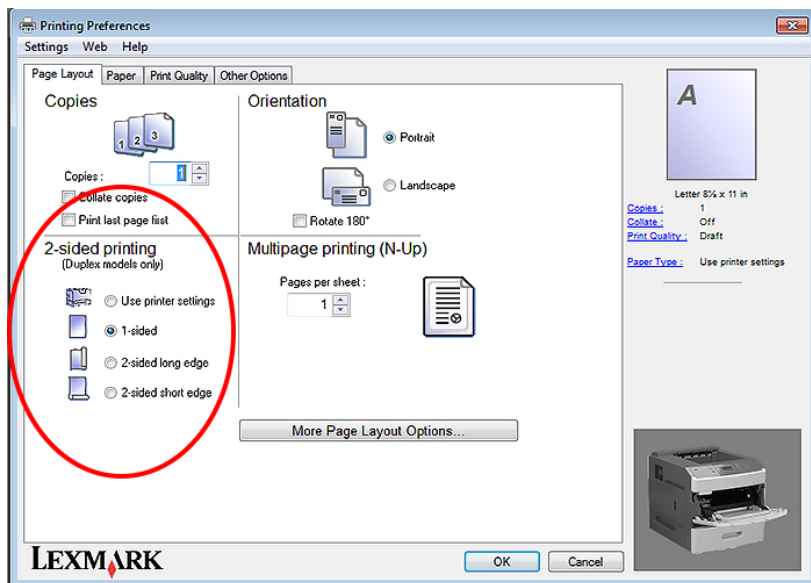


Step 6

From the Printing Preferences window, select your preferred 2-sided printing method of printing.

- To print single-sided, select **Print on one side only**.
- To print double-sided (duplex), select **Print on both sides**.

Note: This dialog box will look the same for all printers that support duplex and single-sided printing.



Step 7

Click **OK** to close the printing preferences window.

Step 8

Click **Print** to send the document to the selected printer.

Step 9

Click **Print** to send the document to the selected printer.

