



SESSION 4

FEB. 16, 2022

Small and mid-sized cities: Urban policies targetting migrants

Chair: Melissa Kelly, CERC Migration, Ryerson University

Migrant and refugee settlement in regional Australia: Multi-level policies and migrant agency,
Martina Boese, La Trobe University

International migration in contexts of population ageing, population loss and economic disparity: Comparing second-tier cities in Atlantic Canada and the U.S. Rust Belt,
Yolande Pottie-Sherman, Memorial University

Communities in the driver's seat: Insights from North America and Europe on migrant attraction and retention in small cities
Talia Stump, Multicultural New South Wales

**Ryerson
University**

**Canada Excellence
Research Chair in
Migration & Integration**

COMMUNITIES IN THE DRIVER'S SEAT

Insights from North America and Europe on migrant attraction and retention in small cities

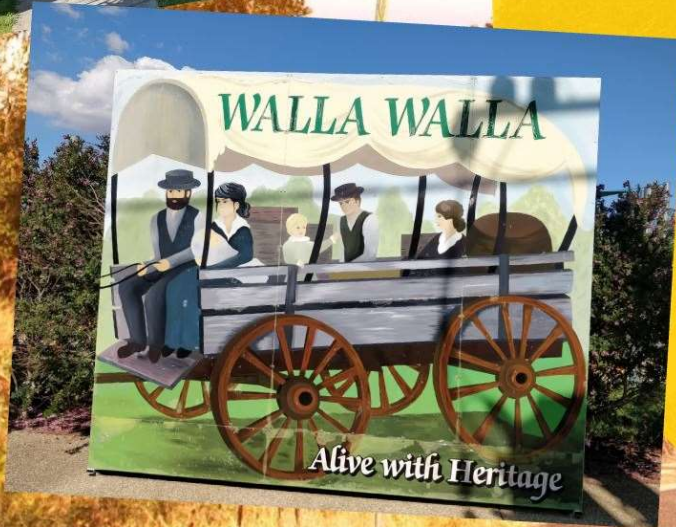
**THE
OPPORTUNITY**

**GLOBAL
INSIGHTS**

**PUTTING
INTO
PRACTICE**

Talia Stump
taliastump@gmail.com

WALLA WALLA, New South Wales



CHURCHILL FELLOWSHIP

To gather practical strategies on refugee/migrant attraction and retention in regional and rural towns

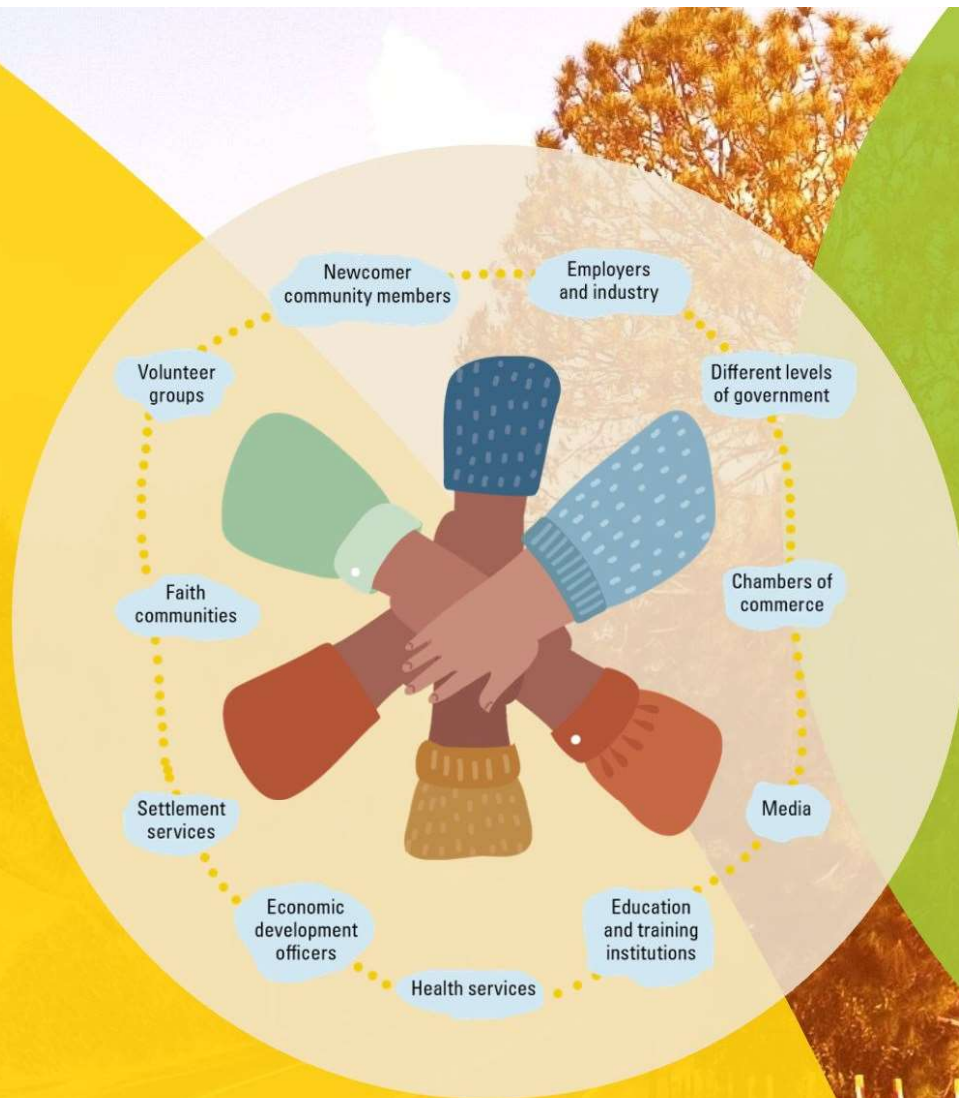
- Canada, USA, Germany, Norway and Sweden
- 20 small and mid-sized cities
- 60 interviews and meetings
- March - May 2019

**KEY
FINDING**

**MISSOULA,
MONTANA,
USA**

**NORDLAND
COUNTY,
NORWAY**





Newcomer attraction and retention requires **concerted action and careful planning involving all community stakeholders.**

The voice of experts



https://youtu.be/MLu4hoUr3_8

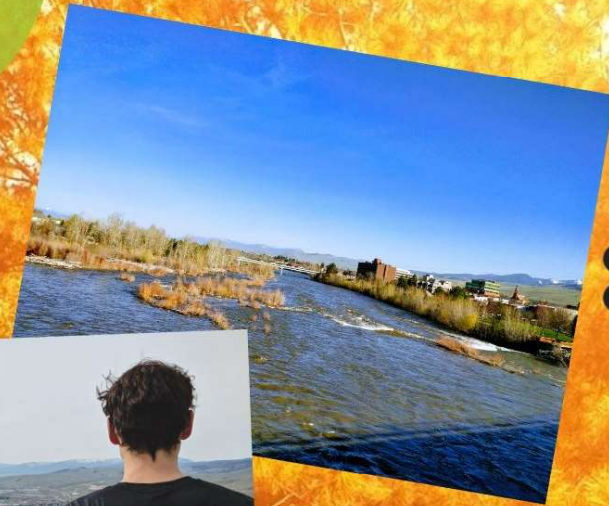
SETTLING REFUGEES

Missoula, USA

- Population: 70,000
- Community-led campaign to become a refugee resettlement city

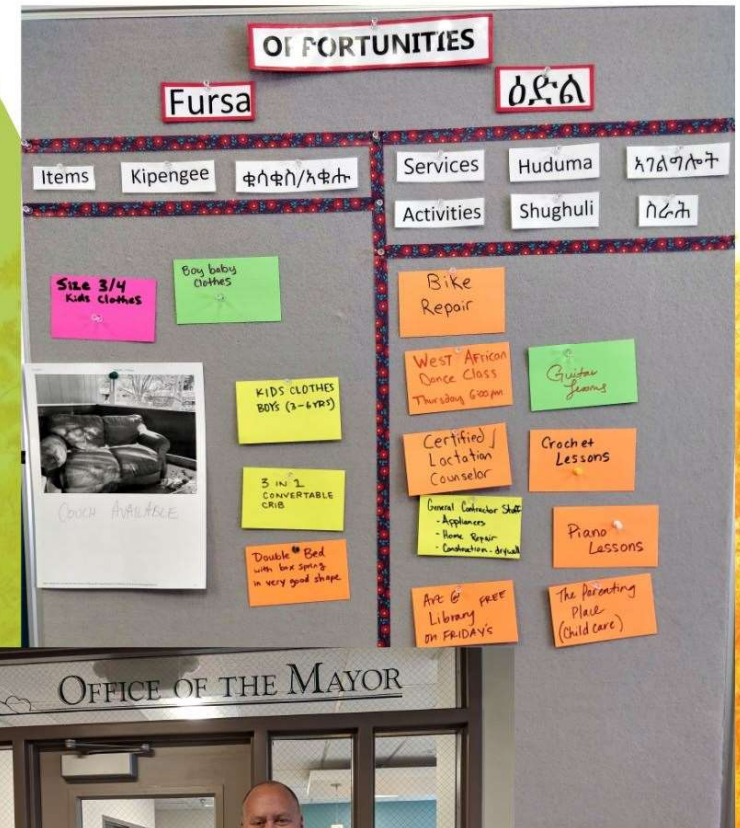


Build
community
consensus



From idea to whole-of-community approach

- Information sessions and conversations helped build trust and support
- Leadership was vital
- Created spaces to unpack fears and concerns
- Investment in consensus building paved the way for community involvement in welcoming and support activities



IN-MIGRATION PROJECT

Nordland County, NORWAY

- 240,000 people across 44 municipalities
- 40% local workforce projected to reach retirement by 2030
- Major industries: Fishing, mineral resources and tourism (farms 11% global cod consumption)
- Aimed to attract 10,000 new inhabitants in 5 years



Coordination
and strategic
planning

Investment in coordination and planning

- Regional approach capitalised on expertise, capacity and resources across the County
- Led to collaborative problem solving and mentoring
- Strong cross-sectoral involvement
 - Various government agencies, university, employers, volunteer organisations, etc.
- Localised the migrant attraction conversation
- Focus on social inclusion



A community-led, strategic approach with government as partner

- NSW GROW (Growing Regions of Welcome)
 - 3 year pilot program
 - Regional approach
 - Investment in multi-sectoral local planning and action (employment, service coordination and welcoming communities)
- Walla Walla's leadership has inspired surrounding towns to initiate their own approaches


**WW
RRC**
Walla Walla Refugee
Resettlement Committee

Notice of meetings
Every 4th Wednesday of the month
from 7pm at St Paul's College
These meetings are open to the
public, and there is an open
questions & answers agenda item
toward the end of each meeting.

Meeting location
St Paul's College, 3 Klemme Ave,
Klemme building classroom.

Upcoming meetings
Wed 27th June, 7pm
Wed 25th July, 7pm
Wed 22nd Aug, 7pm

What do you think?

 @refugees.walla
 refugees.walla@gmail.com



COMMUNITIES IN THE DRIVER'S SEAT

Insights from North America and Europe on migrant attraction and retention in small cities

**THE
OPPORTUNITY**

**GLOBAL
INSIGHTS**

**PUTTING
INTO
PRACTICE**

Talia Stump
taliastump@gmail.com